



Scaling Systematic Reviews: A Solo Researcher's Workflow with Gemini

Pablo Bernabeu, Department of Education

Scaling

- 100s/1000s of papers are often required.

Systematic Reviews:

- Extract same information from all papers
(previously successful: Malik & Sime, 2025,
<https://doi.org/10.18260/1-2--57199>)

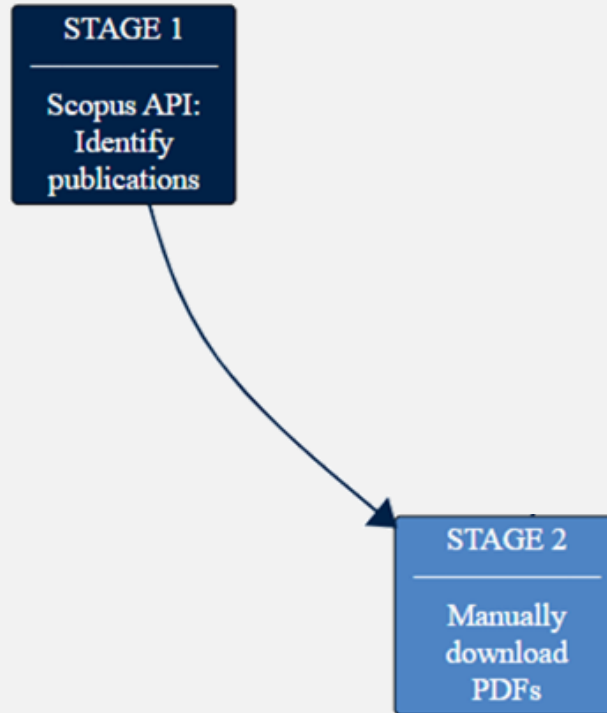
A *Solo (?)* Researcher's

- The more supervision and collab, the better!

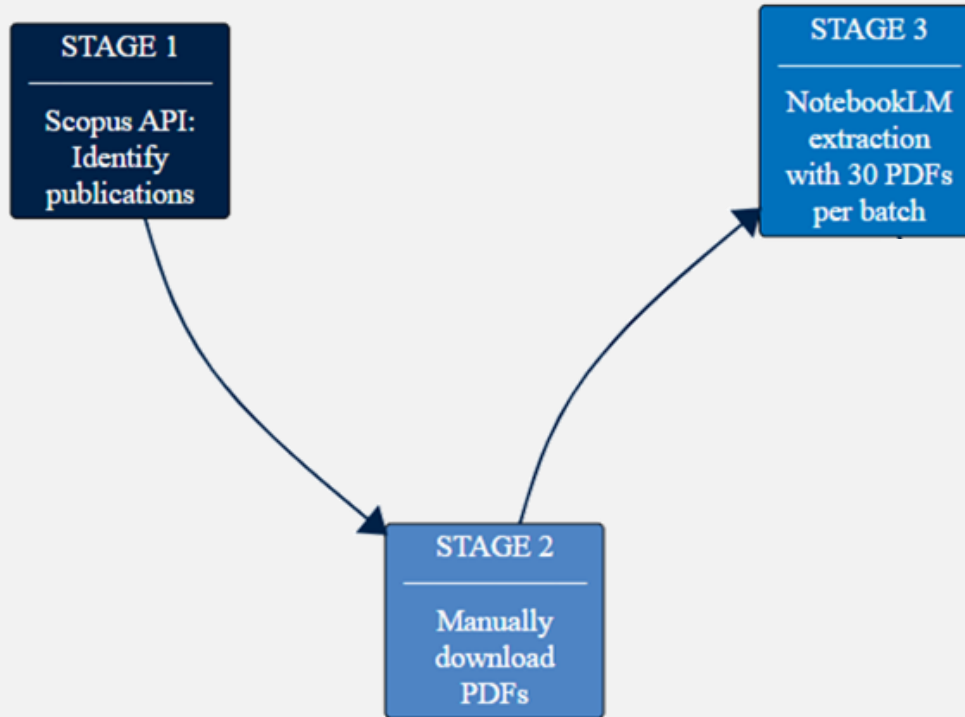
Workflow **with** Gemini

- **+copilot**, **-autopilot** for best results.
- NotebookLM + Gemini + other tools like R.

Search and access PDFs



→ NotebookLM batches



I'm preparing a study to investigate semantic processing using a core semantic priming task as the dependent variable. The independent variables will include stimulus onset asynchrony and individual differences in language (based on lexical decision), vision (based on a visual task) and other sensorimotor modalities (based on the Plymouth Sensory Imagery Questionnaire and a mental comparison task). I need to review relevant studies that present data from an experiment featuring at least one lexical or semantic task, and at least one individual difference in language and/or imagery/perceptual/motor experience.

Help me conduct a systematic review by extracting the following information from every paper attached. Use all the fields listed below in the order provided, placing each field in a column and ensuring that the information is appropriate for the field. Flag any irrelevant studies in the `exclusion_reason` field. Do not use any bullet points or numbered points within fields. Produce the output in a spreadsheet format, and do not use dollar signs for mathematical notation.

Column: filename

Column: title (title of the paper)

Column: exclusion_reason (exclude papers that do not address semantic/conceptual processing or do not present novel experimental data)

Column: experiment_ID (if there is more than one experiment in a paper, label each experiment with a unique ID, such as 'Exp 1' and 'Exp 2', and extract the appropriate information for each experiment)

Column: relevance_rating (scale ranging between 0 and 10 that assesses the relevance of the paper to the study I am preparing, described above)

Column: number_of_participants

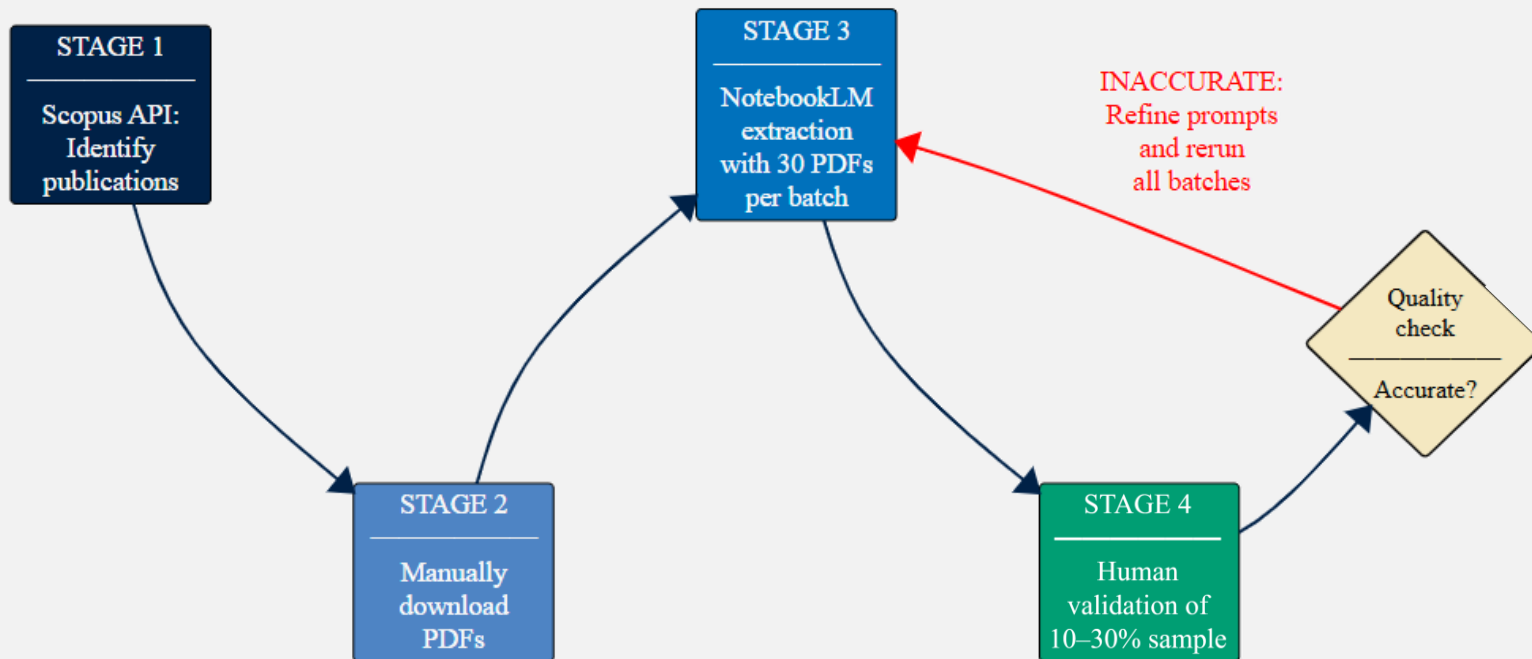
Column: number_of_trials

Column: language_of_testing (language of the tasks)

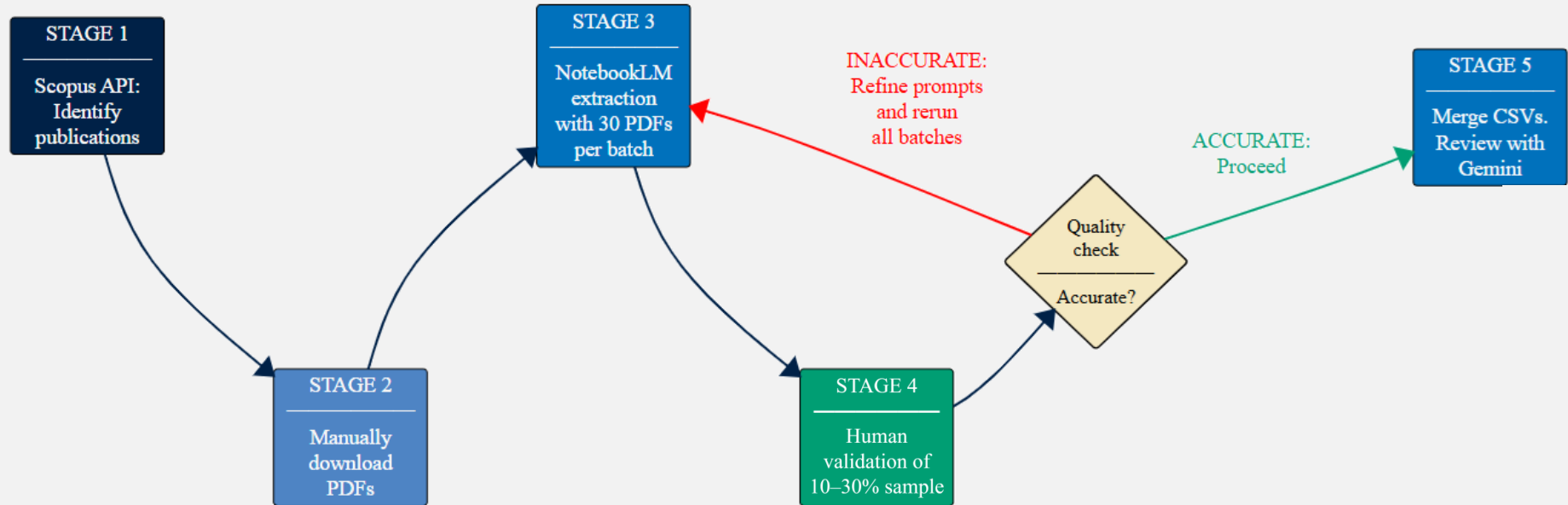
Include all 25 columns: filename, title, exclusion_reason, experiment_ID, relevance_rating, number_of_participants, number_of_trials, language_of_testing, first_language, second_language, lexical_or_semantic_task, individual_language_experience_measure, effect_of_individual_language_experience_on_semantic_processing, effect_size_of_individual_language_experience_on_semantic_processing, individual_imagery_experience_measure, effect_of_individual_imagery_experience_on_semantic_processing, effect_size_of_individual_imagery_experience_on_semantic_processing, other_individual_differences, statistical_method, power_analysis_method, target_power, required_participants_for_language, required_participants_for_imagery, required_trials_for_language, required_trials_for_imagery

Do not overidentify any information. Leave any missing information blank.

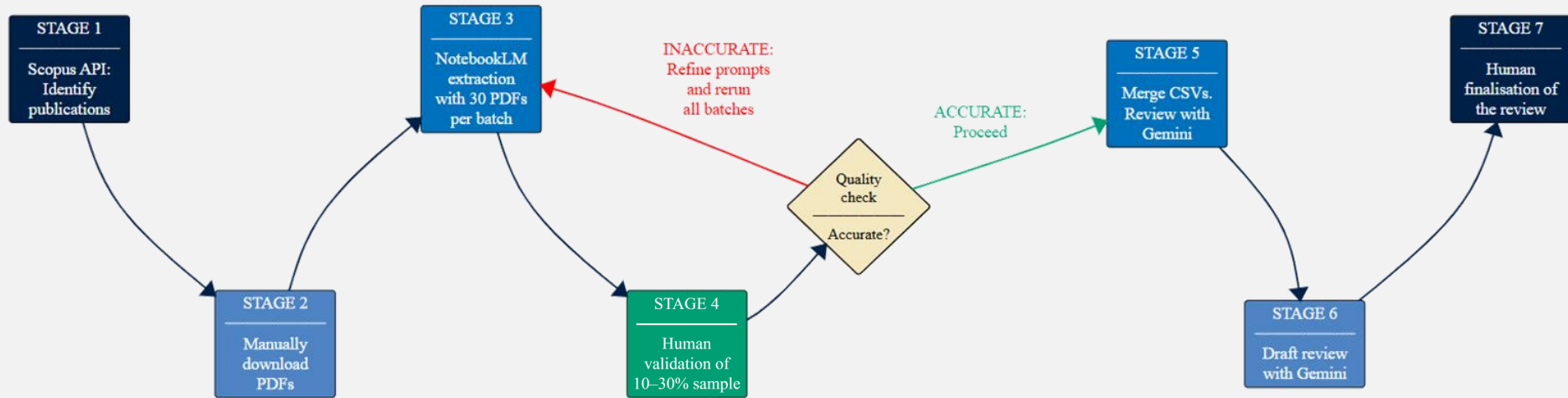
→ Quality check



→ Merge and Gemini review



→ Draft and human finalisation



Thank you

Explore →

*Stay hungry,
stay foolish*



[https://github.com/pablobernabeu/
Gemini_literature_review_workflow](https://github.com/pablobernabeu/Gemini_literature_review_workflow)

Unprecedented individual role in AI
AI-supported workflows are multiplying and improving thanks to projects big and small, including modest, individual attempts.