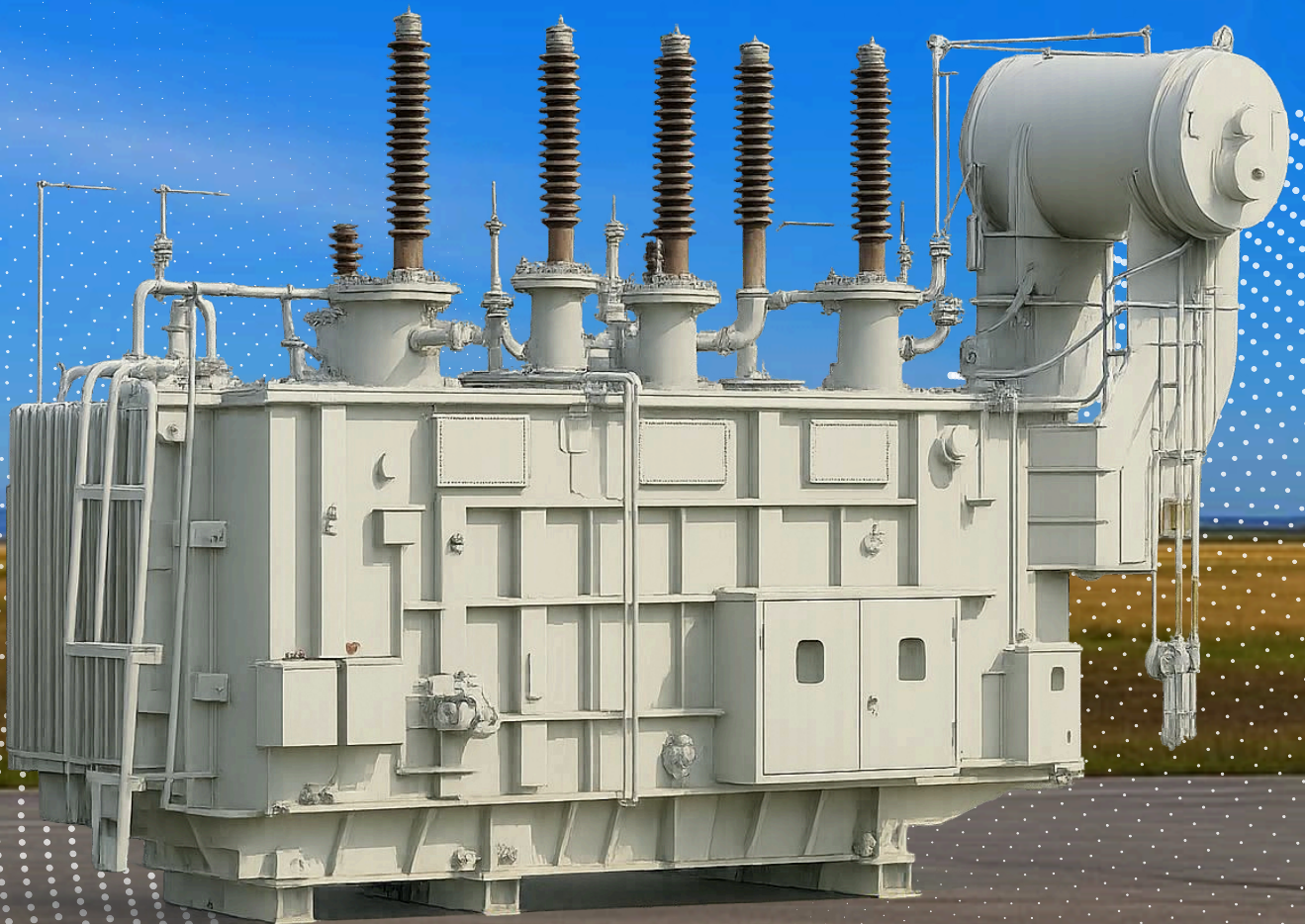


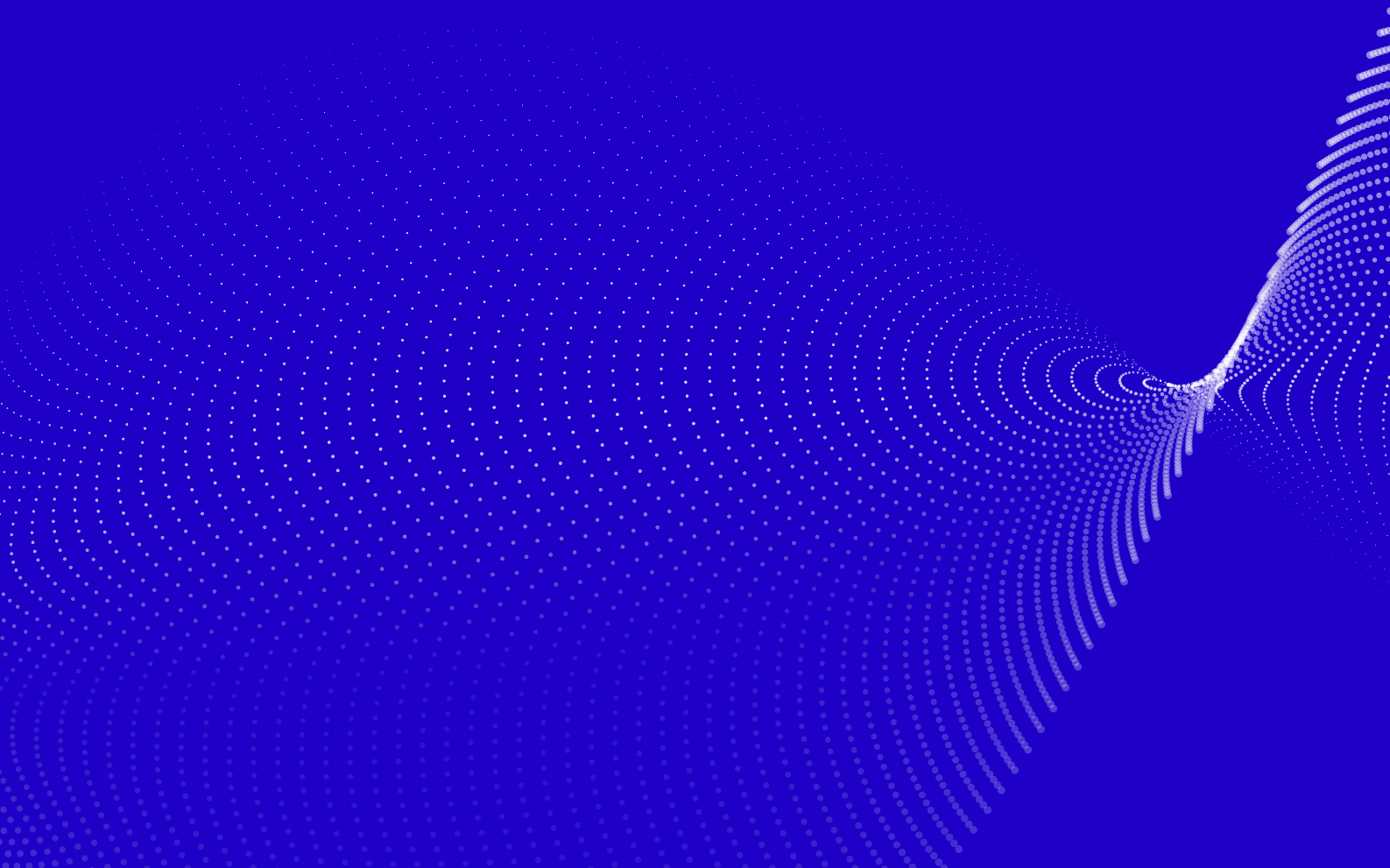
Power Transformer

Design, engineering and manufacturing of power grid equipments the world runs on.



Custom-engineered • Certified and on-site • 50% faster delivery than industry norms

Generator Step-Up Transformers



Generator Step-Up Transformers

Design

HV Bushing Config	<ul style="list-style-type: none">• OIP/RIP/Plug In Socket
Fluid Options	<ul style="list-style-type: none">• Type II Mineral Oil, Natural Ester Oil, Synthetic Ester Oil
Standard Gauge/ Accessory Package	<ul style="list-style-type: none">• Oil Temperature Gauge• Winding Temperature Gauge• Buchholz Relay• Liquid Level Gauge• Sudden Pressure Relay• Seal In Relay• N2 System• Aircell• Aircell Rupture Relay• Pressure Gauge• Fall Protection System• Surge Arrestors• Oil Surge Relay• Maintenance Free Breather / Conventional Breather
Tap Changer	<ul style="list-style-type: none">• On Load Tap Changer• De-Energized Tap changer• Dual Voltage Switch
Type of Voltage Variation	<ul style="list-style-type: none">• CFVV/VFVV
Construction	<ul style="list-style-type: none">• 3 Limb Core• 5 Limb Core
Optional Design Features & Accessories	<ul style="list-style-type: none">• Dissolved Gas Analyzer• Fiber Optic Temperature Monitor• Transformer Monitoring

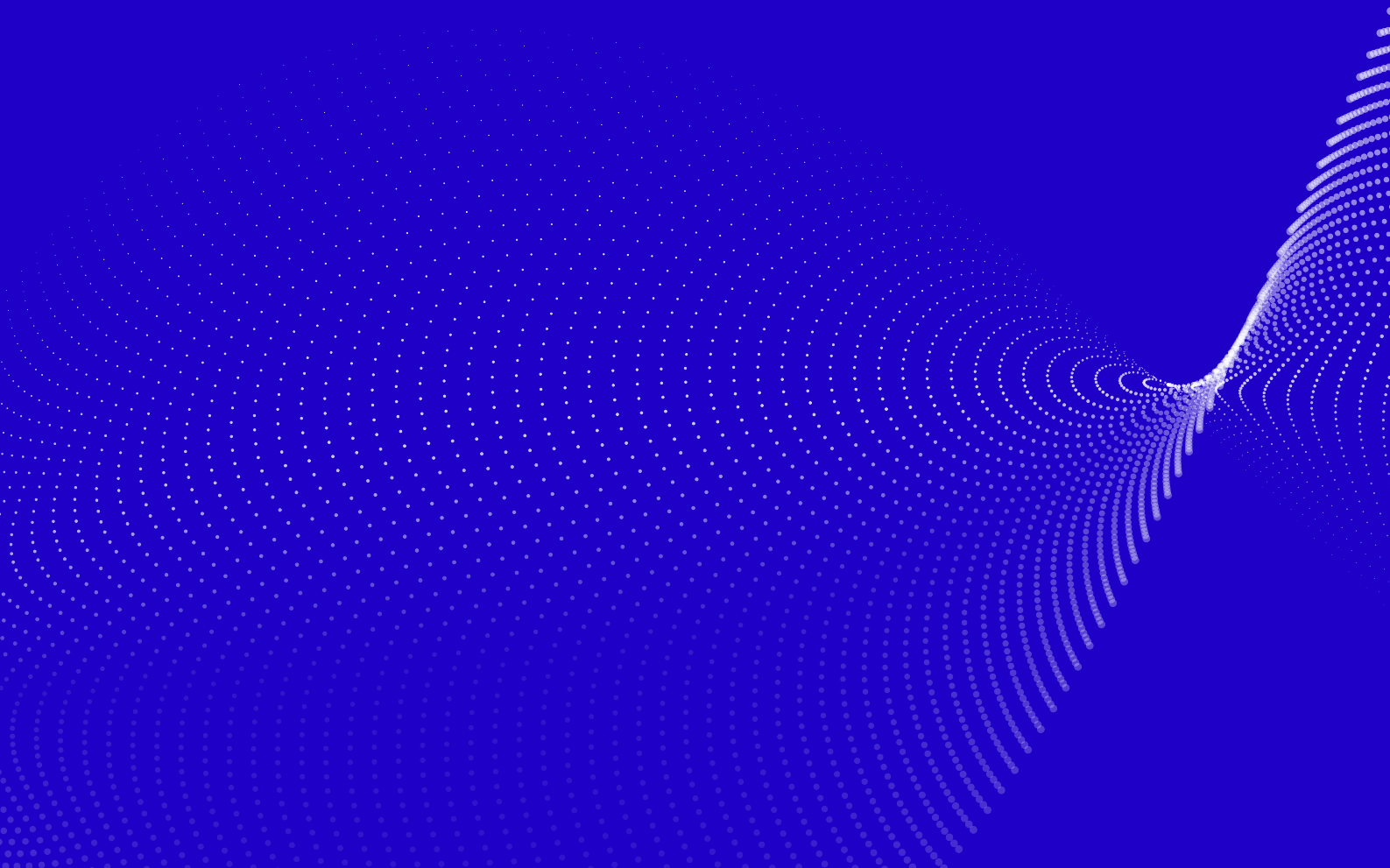
Available Rating

Sizes (MVA)	<ul style="list-style-type: none">• Upto 500 MVA
Frequency	<ul style="list-style-type: none">• 50/60 Hz
Cooling Class	<ul style="list-style-type: none">• ONAN, ONAF, ODAF, ODWF, KNAN, KNAF
Temp Rise	<ul style="list-style-type: none">• 55 / 65°C
Voltages	<ul style="list-style-type: none">• 34.5, 69, 115, 138, 230, 345, 500 kV

Special Design Features

	<ul style="list-style-type: none">• Short Circuit Analysis of Design with FEM Based Software• Transient Analysis & Dielectric Analysis with Advanced Softwares• 3D Magnetic Field Analysis to check metal part temperature• Series Transformer application with Main Transformer as per design requirement• Seismic Analysis as per Requirement• Preventive Auto Transformer used with Reactor Type OLTC• Geomagnetic Induced Current (GIC) analysis as per requirement
--	---

Transmission Transformers



Transmission Transformers

Design

HV Bushing Config	<ul style="list-style-type: none"> • OIP/RIP/Plug In Socket
Fluid Options	<ul style="list-style-type: none"> • Type II Mineral Oil, Natural Ester Oil, Synthetic Ester Oil
Standard Gauge/ Accessory Package	<ul style="list-style-type: none"> • Oil Temperature Gauge • Winding Temperature Gauge • Buchholz Relay • Liquid Level Gauge • Sudden Pressure Relay • Seal In Relay • N2 System • Aircell • Aircell Rupture Relay • Pressure Gauge • Fall Protection System • Surge Arrestors • Oil Surge Relay • Maintenance Free Breather / Conventional Breather
Tap Changer	<ul style="list-style-type: none"> • On Load Tap Changer • De-energized Tap changer • Dual Voltage Switch
Type of Voltage Variation	<ul style="list-style-type: none"> • CFVV/VFVV
Construction	<ul style="list-style-type: none"> • 3 Limb Core • 5 Limb Core
Optional Design Features & Accessories	<ul style="list-style-type: none"> • Dissolved Gas Analyzer • Fiber Optic Temperature Monitor • Transformer Monitoring System

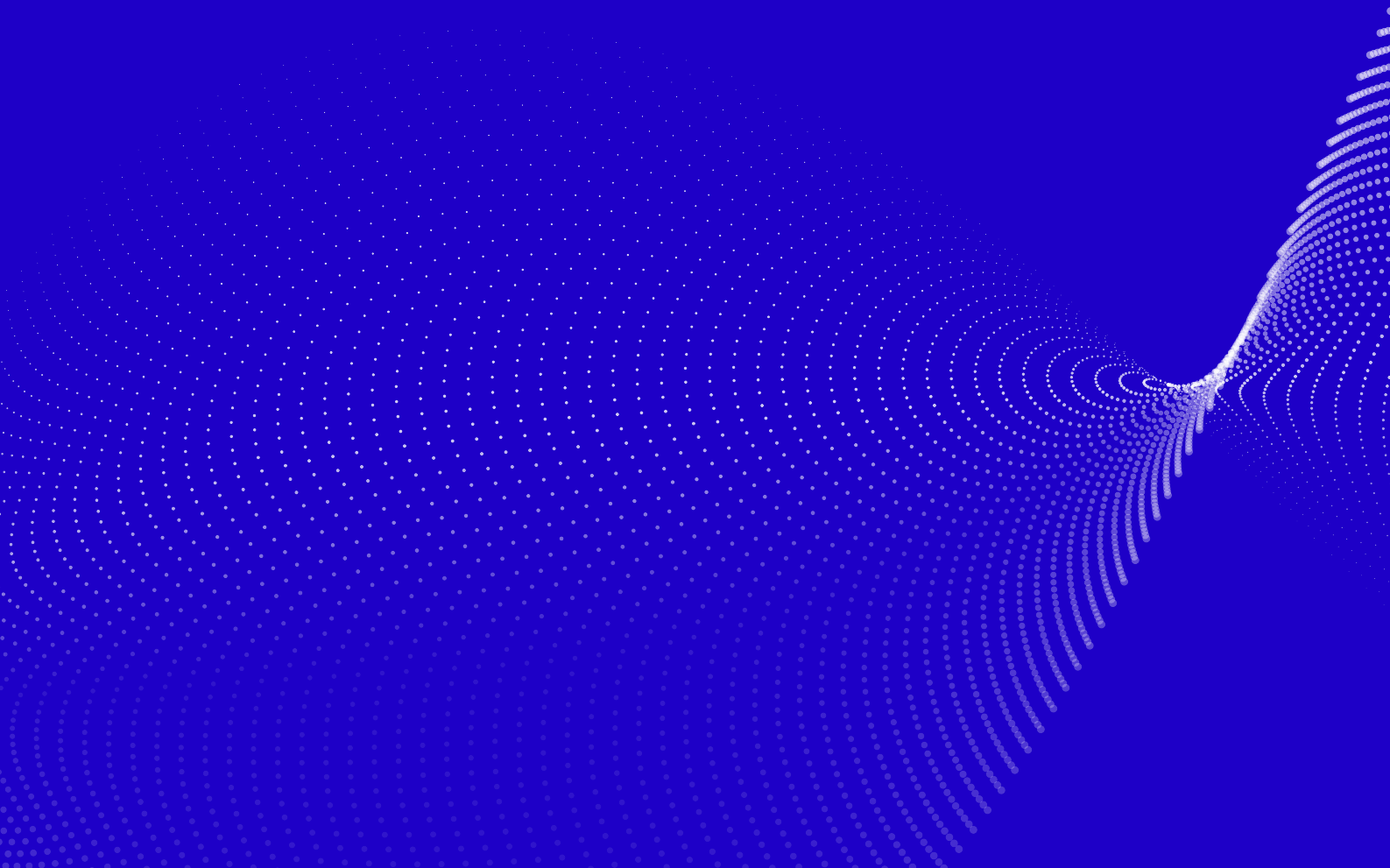
Available Rating

Sizes (MVA)	<ul style="list-style-type: none">• Upto 500 MVA
Frequency	<ul style="list-style-type: none">• 50/60 Hz
Cooling Class	<ul style="list-style-type: none">• ONAN, ONAF, ODAF, ODWF, KNAN, KNAF
Temp Rise	<ul style="list-style-type: none">• 55 / 65°C
Voltages	<ul style="list-style-type: none">• 34.5, 69, 115, 138, 230, 345, 500 kV

Special Design Features

	<ul style="list-style-type: none">• Short Circuit Analysis of Design with FEM Based Software• Transient Analysis & Dielectric Analysis with Advanced Softwares• 3D Magnetic Field Analysis to check metal part temperature• Series Transformer application with Main Transformer as per design requirement• Seismic Analysis as per Requirement• Preventive Auto Transformer used with Reactor Type OLTC• Geomagnetic Induced Current (GIC) analysis as per requirement
--	---

Step-Down Substation Transformers



Step-Down Substation Transformers

Design

HV Bushing Config	<ul style="list-style-type: none">• OIP/RIP/Plug In Socket
Fluid Options	<ul style="list-style-type: none">• Type II Mineral Oil, Natural Ester Oil, Synthetic Ester Oil
Standard Gauge/ Accessory Package	<ul style="list-style-type: none">• Oil Temperature Gauge• Winding Temperature Gauge• Buchholz Relay• Liquid Level Gauge• Sudden Pressure Relay• Seal In Relay• N2 System• Aircell• Aircell Rupture Relay• Pressure Gauge• Fall Protection System• Surge Arrestors• Oil Surge Relay• Maintenance Free Breather / Conventional Breather
Tap Changer	<ul style="list-style-type: none">• On Load Tap Changer• De-energized Tap changer• Dual Voltage Switch
Type of Voltage Variation	<ul style="list-style-type: none">• CFVV/VFVV
Construction	<ul style="list-style-type: none">• 3 Limb Core• 5 Limb Core
Optional Design Features & Accessories	<ul style="list-style-type: none">• Dissolved Gas Analyzer• Fiber Optic Temperature Monitor• Transformer Monitoring System

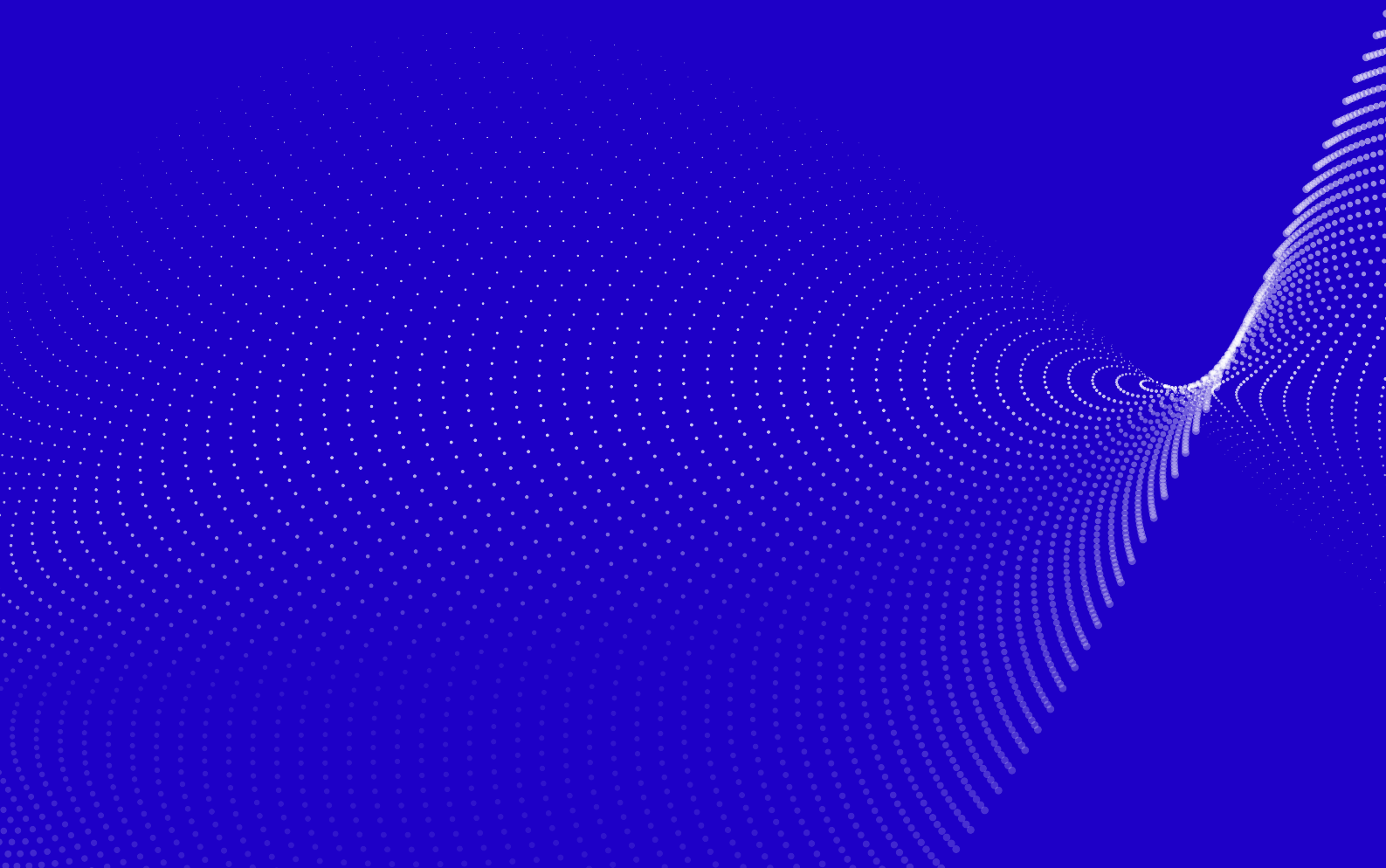
Available Rating

Sizes (MVA)	<ul style="list-style-type: none">• Upto 500 MVA
Frequency	<ul style="list-style-type: none">• 50/60 Hz
Cooling Class	<ul style="list-style-type: none">• ONAN, ONAF, ODAF, ODWF, KNAN, KNAF
Temp Rise	<ul style="list-style-type: none">• 55 / 65°C
Voltages	<ul style="list-style-type: none">• 34.5, 69, 115, 138, 230, 345, 500 kV

Special Design Features

	<ul style="list-style-type: none">• Short Circuit Analysis of Design with FEM Based Software• Transient Analysis & Dielectric Analysis with Advanced Softwares• 3D Magnetic Field Analysis to check metal part temperature• Series Transformer application with Main Transformer as per design requirement• Seismic Analysis as per Requirement• Preventive Auto Transformer used with Reactor Type OLTC• Geomagnetic Induced Current (GIC) analysis as per requirement
--	---

Auto Transformers



Auto Transformers

Design

HV Bushing Config	<ul style="list-style-type: none">• OIP/RIP/Plug In Socket
Fluid Options	<ul style="list-style-type: none">• Type II Mineral Oil, Natural Ester Oil, Synthetic Ester Oil
Standard Gauge/ Accessory Package	<ul style="list-style-type: none">• Oil Temperature Gauge• Winding Temperature Gauge• Buchholz Relay• Liquid Level Gauge• Sudden Pressure Relay• Seal In Relay• N2 System• Aircell• Aircell Rupture Relay• Pressure Gauge• Fall Protection System• Surge Arrestors• Oil Surge Relay• Maintenance Free Breather / Conventional Breather
Tap Changer	<ul style="list-style-type: none">• On Load Tap Changer• De-energized Tap changer• Dual Voltage Switch
Type of Voltage Variation	<ul style="list-style-type: none">• CFVV/VFVV
Construction	<ul style="list-style-type: none">• 3 Limb Core• 5 Limb Core
Optional Design Features & Accessories	<ul style="list-style-type: none">• Dissolved Gas Analyzer• Fiber Optic Temperature Monitor• Transformer Monitoring System

Available Rating

Sizes (MVA)	<ul style="list-style-type: none">• Upto 500 MVA
Frequency	<ul style="list-style-type: none">• 50/60 Hz
Cooling Class	<ul style="list-style-type: none">• ONAN, ONAF, ODAF, ODWF, KNAN, KNAF
Temp Rise	<ul style="list-style-type: none">• 55 / 65°C
Voltages	<ul style="list-style-type: none">• 34.5, 69, 115, 138, 230, 345, 500 kV

Special Design Features

	<ul style="list-style-type: none">• Short Circuit Analysis of Design with FEM Based Software• Transient Analysis & Dielectric Analysis with Advanced Softwares• 3D Magnetic Field Analysis to check metal part temperature• Series Transformer application with Main Transformer as per design requirement• Seismic Analysis as per Requirement• Preventive Auto Transformer used with Reactor Type OLTC• Geomagnetic Induced Current (GIC) analysis as per requirement
--	---