



TEST REPORT

Reference No. : SZ2022050255-1E

Date : May. 16, 2022

Page No.: 1 of 25

Client : Yongjia FeiQi Toy Co., Ltd


Address : Bali, Qiaoxia Town, Yongjia County, Wenzhou City, Zhejiang Province, China


The following merchandise was (were) submitted and identified by the client as:

Name of Product : Slide
Test Model : FE-HT-LXC
Model May Cover : See next page
Main Material: HDPE
Supplier: /
Buyer: /
Labeled Age Grading: Not stated
Applicant's Specified
Age Group for Testing : 1-12 years
Age Grading for Test: 1-12 years
Sample Received : May. 07, 2022
Test Period : May. 07, 2022 - May. 13, 2022

Test Specification and Conclusion:

- | | |
|---|------|
| 1. Mechanical and Physical Properties according to EN71 Part 1: 2014+A1:2018 | PASS |
| 2. Flammability according to EN71 Part 2:2020 | PASS |
| 3. Migration of certain elements according to European Directive 2009/48/EC and its subsequent amendments and EN 71-3:2019+A1:2021 | PASS |
| 4. Mechanical and Physical Properties according to BS EN71 Part 1: 2014+A1:2018, Toys (Safety) Regulations 2011 | PASS |
| 5. Flammability according to BS EN71 Part 2:2020, Toys (Safety) Regulations 2011 | PASS |
| 6. Migration of certain elements according to European Directive 2009/48/EC and its subsequent amendments and BS EN 71-3:2019+A1:2021, Toys (Safety) Regulations 2011 | PASS |

Prepared By : 
David Chen
Testing Engineer

Reviewed By : 
Dora Cheng
Reporter Supervisor

Issued By : 
Ada Wang
Lab Manager



SZ2022050255-1E

STQ Testing Services Co., Ltd.

Add.: Building 1, 15 Yinzhu Road, High-new district, Suzhou, China 215129

Tel.: +86/(0)512 67991866

Fax: +86/(0)512 87661802

Web: www.stq-cert.com

Technical service: TS@stq-cert.com

Customer service: CS@stq-cert.com

TEST REPORT

Reference No. : SZ2022050255-1E

Date : May. 16, 2022

Page No.: 2 of 25

Model May Cover :

FE-HT-HJD、FE-HT-DBS、FE-HT-XTZ、FE-HT-HLB、FE-HT-XJC、FE-HT-XQC、
FE-HT-YD0、FE-HT-YDI、FE-HT-SZ0、FE-HT-DL0、FE-HT-DG1、FE-HT-XHD、
L-WN01、L-XDZ02、L-XDZ03、L-XG02、L-XG03、L-XQC01、L-XQC02、L-DSL01、
L-DSL02、L-DSL03、L-LQS01、L-LQS02、L-LQS03、L-MTY、L-XS01、L-CJL01、
L-KL01、L-NLL01、L-NLL02、L-HT01、L-HT30、L-XHJ01、L-XHJ02、L-XHJ03、
L-XHJ04、L-MZ01、L-MZ03、L-MZ05、L-DT01、L-DT02、L-DT03、L-DT04、
L-DT05、L-DT06、L-DT07、L-DT09、L-XCB01、L-XCB02、L-XCB03、L-AFE01、
L-AFE03、L-AFE05、L-AFE08、L-AFE10、L-AFE11、L-AFE12、L-AFE13、L-AFE14、
L-AFE15、L-AFE16、L-HJ01、L-HJ03、L-HJ05、L-HJ06、L-DC01、L-DC02、
L-DC03、L-DC04、L-DC06、L-DC07、L-DC09、L-DC10、L-DGN01、L-DGN02、
L-DGN03、L-DGN04、L-DGN06、L-DGN07、L-MH02、L-MH05、HT-QD01、
HT-QD02、HT-QD03、HT-QD04、L-HT0363、L-BS12、L-BS13、L-M01、L-M02、
L-M03、L-M04、L-M05、L-M06、L-M07、L-M08、HT-BL01、HT-BL02、HT-BL03、
HT-BL04、HT-BL05、HT-BL06、HT-HC01、HT-HC02、HT-HC04、HT-HC06、
HT-HC08、HT-HC10、HT-HC11、HT-HC13、HT-YY01、L-HM01、L-HM02、L-HM03、
L-HM05、L-HS01、L-HS03、L-HS08、L-HS14

***** To be continued *****

TEST REPORT

Reference No. : SZ2022050255-1E

Date : May. 16, 2022

Page No.: 3 of 25

TEST RESULTS:

1. European Standard-Safety of Toys: EN71 Part 1: 2014+A1:2018-Mechanical and Physical Properties

Test Items	Test Results
	1#
4.1 Material cleanliness	PASS
4.2 Assembly	PASS
4.3 Flexible plastic sheeting	N/A
4.4 Toy bags	N/A
4.5 Glass	N/A
4.6 Expanding materials	N/A
4.7 Edges	PASS
(a) Edges of metal or glass	N/A
(b) Overlap joints	N/A
(c) Edges of metal and of rigid polymeric material	PASS
(d) Functional edges	N/A
4.8 Points and wires	PASS
(a) Points	PASS
(b) Sharp functional points	N/A
(c) Metallic wires intended to be bent	N/A
(d) Metallic wires not designed to be bent	N/A
(e) Splinters on surfaces and accessible edges of toys	N/A
4.9 Protruding parts	N/A
4.10 Parts moving against each other	N/A
4.10.1 Folding and slide mechanism	N/A
4.10.2 Driving mechanisms	N/A
4.10.3 Hinges	N/A
4.10.4 Springs	N/A
4.11 Mouth-actuated toys and other toys intended to be put in the mouth	N/A
4.12 Balloons	N/A
4.13 Cords of toy kites and other flying toys	N/A
4.14 Enclosures	N/A
4.14.1 Toys which a children can enter	N/A
4.14.2 Masks and helmets	N/A
4.15 Toys intended to bear the mass of a child	PASS

STQ Testing Services Co., Ltd.

Add.: Building 1, 15 Yinzhu Road, High-new district, Suzhou, China 215129

Tel.: +86/(0)512 67991866

Fax: +86/(0)512 87661802

Web: www.stq-cert.com

Technical service: TS@stq-cert.com

Customer service: CS@stq-cert.com

TEST REPORT

Reference No. : SZ2022050255-1E

Date : May. 16, 2022

Page No.: 4 of 25

4.15.1	Toys propelled by the child or by other means	N/A
4.15.2	Toy bicycles	N/A
4.15.3	Rocking horses and similar toys	N/A
4.15.4	Toys not propelled by a child	PASS
4.15.5	Toys scooters	N/A
4.16	Heavy immobile toys	N/A
4.17	Projectiles toys	N/A
4.17.1	General	N/A
4.17.2	All projectiles	N/A
4.17.3	Projectile toys with stored energy	N/A
4.17.4	Certain projectile toys without stored energy	N/A
4.18	Aquatic toys and inflatable toys	N/A
4.19	Percussion caps specifically designed for use in toys and toys using percussion caps	N/A
4.20	Acoustics	N/A
4.21	Toys containing a non-electrical heat source	N/A
4.22	Small balls	N/A
4.23	Magnets	N/A
4.23.1	General	N/A
4.23.2	Toys other than magnetic/electrical experimental sets	N/A
4.23.3	Magnetic/ electrical experimental sets	N/A
4.24	Yo-yo balls	N/A
4.25	Toys attached to food	N/A
4.26	Toy Disguise Costumes	N/A
4.27	Flying toys	N/A

Test Items	Test Results
	1#
5. Toys intended for children under 36 months	
5.1 General requirements	PASS
(a) Toys and removable components of toys shall not, whatever their position fit entirely in the cylinder	PASS
(b) When tested toys shall not produce any parts which, whatever their position, fit entirely in the cylinder, or exhibit accessible hazardous sharp edges or accessible hazardous sharp points	PASS

STQ Testing Services Co., Ltd.

Add.: Building 1, 15 Yinzhu Road, High-new district, Suzhou, China 215129

Tel.: +86/(0)512 67991866

Fax: +86/(0)512 87661802

Web: www.stq-cert.com

Technical service: TS@stq-cert.com

Customer service: CS@stq-cert.com

TEST REPORT

Reference No. : SZ2022050255-1E

Date : May. 16, 2022

Page No.: 5 of 25

(c)	Metal points and wires with a cross section of 2 mm or less	N/A
(d)	Large and bulky toys	PASS
(e)	Glued wooden toys and toys with glued-on plastic decals	N/A
(f)	The casing of toys	N/A
(g)	For foam toys and toys containing accessible foam components	N/A
5.2	Soft-filled toys and soft-filled parts of a toy	N/A
(a)	Hard and sharp contaminants	N/A
(b)	Soft-filled toys and soft-filled parts of a toy containing small parts	N/A
(c)	fibrous filling material	N/A
5.3	Plastic sheeting	N/A
5.4	Cord, chains and electrical cables in toys	PASS
5.4.1	General	PASS
5.4.2	Cords and chains in toys intended for children under 18 months	PASS
5.4.3	Cords and chains in toys intended for children of 18 months or over but under 36 months	PASS
5.4.4	Fixed loops, tangled loops and nooses	PASS
5.4.5	Cords and chains on pull along toys	N/A
5.4.6	Electrical cables	N/A
5.4.7	Cross-sectional dimension of certain cords	N/A
5.4.8	Self-retracting cords	N/A
5.4.9	Toys attached to or intended to be strung across a cradle, cot or perambulator	N/A
5.5	Liquid-filled toys	N/A
5.6	Speed limitation of electrically-driven ride-on toys	N/A
5.7	Glass and porcelain	N/A
5.8	Shape and size of certain toys	N/A
5.9	Toys comprising monofilament fibres	N/A
5.10	Small balls	N/A
5.11	Play figures	N/A
5.12	Hemispheric-shaped toys	N/A
5.13	Suction cups	N/A
5.14	Straps intended to be worn fully or partially around the neck	N/A
5.15	Sledges with cords for pulling	N/A

STQ Testing Services Co., Ltd.

Add.: Building 1, 15 Yinzhong Road, High-new district, Suzhou, China 215129

Tel.: +86/(0)512 67991866

Fax: +86/(0)512 87661802

Web: www.stq-cert.com

Technical service: TS@stq-cert.com

Customer service: CS@stq-cert.com

TEST REPORT

Reference No. : SZ2022050255-1E

Date : May. 16, 2022

Page No.: 6 of 25

Test Items	Test Results
	1#
6. Packaging	PASS

Test Items	Test Results
	1#
7. Warnings, markings and instructions for use Tracking information [CE mark, importer / manufacturer mark (name, address), product identification]	SEE REMARK
7.1 General	N/A
7.2 Toys not intended for children under 36 months	N/A
7.3 Latex balloons	N/A
7.4 Aquatic toys	N/A
7.5 Functional toys	N/A
7.6 Hazardous sharp functional edges and points	N/A
7.7 Projectiles toys	N/A
7.8 Imitation protective masks and helmets	N/A
7.9 Toy kites	N/A
7.10 Roller skates, inline skates, skateboards and certain other ride-on toys	N/A
7.11 Toys intended to be strung across a cradle,cot,or perambulator	N/A
7.12 Liquid filled tethers	N/A
7.13 Percussion caps specifically designed for use in toys	N/A
7.14 Acoustics	N/A
7.15 Toys bicycle	N/A
7.16 Toys intended to bear the mass of a child	N/A
7.17 Toys comprising monofilament fibers	N/A
7.18 Toy scooters	N/A
7.19 Rocking horses and similar toys	N/A
7.20 Magnetic/electrical experimental sets	N/A
7.21 Toys with electrical cables exceeding 300mm in length	N/A
7.22 Toys with cords or chains intended for children of 18 months and over but under 36 months	N/A
7.23 Toys intended to be attached to a cradle, cot or perambulator	N/A
7.24 Sledges with cords for pulling	N/A
7.25 Flying toys	N/A

STQ Testing Services Co., Ltd.

Add.: Building 1, 15 Yinzhong Road, High-new district, Suzhou, China 215129

Tel.: +86/(0)512 67991866

Fax: +86/(0)512 87661802

Web: www.stq-cert.com

Technical service: TS@stq-cert.com

Customer service: CS@stq-cert.com

TEST REPORT

Reference No. : SZ2022050255-1E

Date : May. 16, 2022

Page No.: 7 of 25

7.26	Improvised projectiles	N/A
------	------------------------	-----

Remark: It is drawn to your attention that the product identification number, name and address of manufacturer and importer in EEC country together with CE-marking should appear as specified in Directive-2009/48/EC-Safety of toys.

2. European Standard-Safety of Toys: EN71 Part 2: 2020-Flammability

Test Items	Test Results
	1#
4.1 General Requirements	PASS
4.2 Toys to be worn on the head	N/A
4.3 Toy disguise costumes and toys intended to be worn by a child in play	N/A
4.4 Toys intended to be entered by a child	N/A
4.5 Soft filled toys	N/A

***** To be continued *****

STQ Testing Services Co., Ltd.

Add.: Building 1, 15 Yinzhu Road, High-new district, Suzhou, China 215129

Tel.: +86/(0)512 67991866

Fax: +86/(0)512 87661802

Web: www.stq-cert.com

Technical service: TS@stq-cert.com

Customer service: CS@stq-cert.com

TEST REPORT

Reference No. : SZ2022050255-1E

Date : May. 16, 2022

Page No.: 8 of 25

3. Migration of certain elements

Test Method:

Extractable Chromium(VI): With reference to EN 71-3:2019+A1:2021, analysis was performed by IC-ICP-MS.

Extractable Chromium(III): With reference to EN 71-3:2019+A1:2021, calculated by subtracting the Chromium (VI) concentration from the total chromium concentration.

Other Elements: With reference to EN 71-3:2019+A1:2021, analysis was performed by ICP-MS.

Extractable Organic Tin: With reference to EN 71-3:2019+A1:2021, analysis was performed by GC-MS.

Test Item(s)	Unit	MDL	Result				Category III
			2#	3#	4#	5#	
Extractable Lead (Pb)	mg/kg	10	N.D.	N.D.	N.D.	N.D.	23
Extractable Antimony (Sb)	mg/kg	10	N.D.	N.D.	N.D.	N.D.	560
Extractable Arsenic (As)	mg/kg	10	N.D.	N.D.	N.D.	N.D.	47
Extractable Barium (Ba)	mg/kg	50	N.D.	N.D.	N.D.	N.D.	18750
Extractable Cadmium (Cd)	mg/kg	10	N.D.	N.D.	N.D.	N.D.	17
Extractable Chromium (III) (Cr III)	mg/kg	5	N.D.	N.D.	N.D.	N.D.	460
Extractable Chromium (VI)(Cr VI)	mg/kg	0.05	N.D.	N.D.	N.D.	N.D.	0.053
Extractable Mercury (Hg)	mg/kg	10	N.D.	N.D.	N.D.	N.D.	94
Extractable Selenium (Se)	mg/kg	10	N.D.	N.D.	N.D.	N.D.	460
Extractable Boron (B)	mg/kg	50	N.D.	N.D.	N.D.	N.D.	15000
Extractable Cobalt (Co)	mg/kg	10	N.D.	N.D.	N.D.	N.D.	130
Extractable Manganese (Mn)	mg/kg	50	N.D.	N.D.	N.D.	N.D.	15000
Extractable Strontium (Sr)	mg/kg	50	N.D.	N.D.	N.D.	N.D.	56000
Extractable Tin (Sn)	mg/kg	5	N.D.	N.D.	N.D.	N.D.	180000
Extractable Zinc (Zn)	mg/kg	50	N.D.	N.D.	N.D.	225	46000
Extractable Copper (Cu)	mg/kg	50	N.D.	N.D.	N.D.	N.D.	7700
Extractable Aluminum (Al)	mg/kg	50	N.D.	N.D.	N.D.	N.D.	28130
Extractable Nickel (Ni)	mg/kg	10	N.D.	N.D.	N.D.	N.D.	930
Extractable Organic Tin	mg/kg	0.02	N.D.	N.D.	N.D.	N.D.	12

STQ Testing Services Co., Ltd.

Add.: Building 1, 15 Yinzhong Road, High-new district, Suzhou, China 215129

Tel.: +86/(0)512 67991866

Fax: +86/(0)512 87661802

Web: www.stq-cert.com

Technical service: TS@stq-cert.com

Customer service: CS@stq-cert.com

TEST REPORT

Reference No. : SZ2022050255-1E

Date : May. 16, 2022

Page No.: 9 of 25

Test Item(s)	Unit	MDL	Result			Category III
			6#	7#	8#	
Extractable Lead (Pb)	mg/kg	10	N.D.	N.D.	N.D.	23
Extractable Antimony (Sb)	mg/kg	10	N.D.	N.D.	N.D.	560
Extractable Arsenic (As)	mg/kg	10	N.D.	N.D.	N.D.	47
Extractable Barium (Ba)	mg/kg	50	N.D.	N.D.	N.D.	18750
Extractable Cadmium (Cd)	mg/kg	10	N.D.	N.D.	N.D.	17
Extractable Chromium (III) (Cr III)	mg/kg	5	N.D.	N.D.	N.D.	460
Extractable Chromium (VI)(Cr VI)	mg/kg	0.05	N.D.	N.D.	N.D.	0.053
Extractable Mercury (Hg)	mg/kg	10	N.D.	N.D.	N.D.	94
Extractable Selenium (Se)	mg/kg	10	N.D.	N.D.	N.D.	460
Extractable Boron (B)	mg/kg	50	N.D.	N.D.	N.D.	15000
Extractable Cobalt (Co)	mg/kg	10	N.D.	N.D.	N.D.	130
Extractable Manganese (Mn)	mg/kg	50	N.D.	N.D.	N.D.	15000
Extractable Strontium (Sr)	mg/kg	50	N.D.	N.D.	N.D.	56000
Extractable Tin (Sn)	mg/kg	5	N.D.	N.D.	N.D.	180000
Extractable Zinc (Zn)	mg/kg	50	N.D.	N.D.	N.D.	46000
Extractable Copper (Cu)	mg/kg	50	N.D.	N.D.	N.D.	7700
Extractable Aluminum (Al)	mg/kg	50	N.D.	N.D.	N.D.	28130
Extractable Nickel (Ni)	mg/kg	10	N.D.	N.D.	N.D.	930
Extractable Organic Tin	mg/kg	0.02	N.D.	N.D.	N.D.	12

TEST REPORT

Reference No. : SZ2022050255-1E

Date : May. 16, 2022

Page No.: 10 of 25

Limited Value for migration of certain elements:

Test Item(s)	Unit	Limited Value*		
		Category I	Category II	Category III
Extractable Lead (Pb)	mg/kg	2.0	0.5	23
Extractable Antimony (Sb)	mg/kg	45	11.3	560
Extractable Arsenic (As)	mg/kg	3.8	0.9	47
Extractable Barium (Ba)	mg/kg	1500	375	18750
Extractable Cadmium (Cd)	mg/kg	1.3	0.3	17
Extractable Chromium (III) (Cr III)	mg/kg	37.5	9.4	460
Extractable Chromium (VI) (Cr VI)	mg/kg	0.02	0.005	0.053
Extractable Mercury (Hg)	mg/kg	7.5	1.9	94
Extractable Selenium (Se)	mg/kg	37.5	9.4	460
Extractable Boron (B)	mg/kg	1200	300	15000
Extractable Cobalt (Co)	mg/kg	10.5	2.6	130
Extractable Manganese (Mn)	mg/kg	1200	300	15000
Extractable Strontium (Sr)	mg/kg	4500	1125	56000
Extractable Tin (Sn)	mg/kg	15000	3750	180000
Extractable Zinc (Zn)	mg/kg	3750	938	46000
Extractable Copper (Cu)	mg/kg	622.5	156	7700
Extractable Aluminum (Al)	mg/kg	2250	560	28130
Extractable Nickel (Ni)	mg/kg	75	18.8	930
Extractable Organic Tin	mg/kg	0.9	0.2	12

Remark: * The Limited value is based on European Directive 2009/48/EC and its subsequent amendments and EN 71-3:2019+A1:2021.

Category I: Dry, brittle, powder-like or pliable materials

Category II: Liquid or sticky materials

Category III: Scrapped-off materials

TEST REPORT

Reference No. : SZ2022050255-1E

Date : May. 16, 2022

Page No.: 11 of 25

4.British Standard- BS EN71 Part 1: 2014+A1:2018-Mechanical and Physical Properties, Toys (Safety) Regulations 2011

Test Items	Test Results
	1#
4.1 Material cleanliness	PASS
4.2 Assembly	PASS
4.3 Flexible plastic sheeting	N/A
4.4 Toy bags	N/A
4.5 Glass	N/A
4.6 Expanding materials	N/A
4.7 Edges	PASS
(a) Edges of metal or glass	N/A
(b) Overlap joints	N/A
(c) Edges of metal and of rigid polymeric material	PASS
(d) Functional edges	N/A
4.8 Points and wires	PASS
(a) Points	PASS
(b) Sharp functional points	N/A
(c) Metallic wires intended to be bent	N/A
(d) Metallic wires not designed to be bent	N/A
(e) Splinters on surfaces and accessible edges of toys	N/A
4.9 Protruding parts	N/A
4.10 Parts moving against each other	N/A
4.10.1 Folding and slide mechanism	N/A
4.10.2 Driving mechanisms	N/A
4.10.3 Hinges	N/A
4.10.4 Springs	N/A
4.11 Mouth-actuated toys and other toys intended to be put in the mouth	N/A
4.12 Balloons	N/A
4.13 Cords of toy kites and other flying toys	N/A
4.14 Enclosures	N/A
4.14.1 Toys which a children can enter	N/A
4.14.2 Masks and helmets	N/A
4.15 Toys intended to bear the mass of a child	PASS
4.15.1 Toys propelled by the child or by other means	N/A

STQ Testing Services Co., Ltd.

Add.: Building 1, 15 Yinzhu Road, High-new district, Suzhou, China 215129

Tel.: +86/(0)512 67991866

Fax: +86/(0)512 87661802

Web: www.stq-cert.com

Technical service: TS@stq-cert.com

Customer service: CS@stq-cert.com

TEST REPORT

Reference No. : SZ2022050255-1E

Date : May. 16, 2022

Page No.: 12 of 25

4.15.2	Toy bicycles	N/A
4.15.3	Rocking horses and similar toys	N/A
4.15.4	Toys not propelled by a child	PASS
4.15.5	Toys scooters	N/A
4.16	Heavy immobile toys	N/A
4.17	Projectiles toys	N/A
4.17.1	General	N/A
4.17.2	All projectiles	N/A
4.17.3	Projectile toys with stored energy	N/A
4.17.4	Certain projectile toys without stored energy	N/A
4.18	Aquatic toys and inflatable toys	N/A
4.19	Percussion caps specifically designed for use in toys and toys using percussion caps	N/A
4.20	Acoustics	N/A
4.21	Toys containing a non-electrical heat source	N/A
4.22	Small balls	N/A
4.23	Magnets	N/A
4.23.1	General	N/A
4.23.2	Toys other than magnetic/electrical experimental sets	N/A
4.23.3	Magnetic/ electrical experimental sets	N/A
4.24	Yo-yo balls	N/A
4.25	Toys attached to food	N/A
4.26	Toy Disguise Costumes	N/A
4.27	Flying toys	N/A

Test Items	Test Results
	1#
5. Toys intended for children under 36 months	
5.1 General requirements	PASS
(a) Toys and removable components of toys shall not, whatever their position fit entirely in the cylinder	PASS
(b) When tested toys shall not produce any parts which, whatever their position, fit entirely in the cylinder, or exhibit accessible hazardous sharp edges or accessible hazardous sharp points	PASS
(c) Metal points and wires with a cross section of 2 mm or less	N/A

STQ Testing Services Co., Ltd.

Add.: Building 1, 15 Yinzhu Road, High-new district, Suzhou, China 215129

Tel.: +86/(0)512 67991866

Fax: +86/(0)512 87661802

Web: www.stq-cert.com

Technical service: TS@stq-cert.com

Customer service: CS@stq-cert.com

TEST REPORT

Reference No. : SZ2022050255-1E

Date : May. 16, 2022

Page No.: 13 of 25

(d)	Large and bulky toys	PASS
(e)	Glued wooden toys and toys with glued-on plastic decals	N/A
(f)	The casing of toys	N/A
(g)	For foam toys and toys containing accessible foam components	N/A
5.2	Soft-filled toys and soft-filled parts of a toy	N/A
(a)	Hard and sharp contaminants	N/A
(b)	Soft-filled toys and soft-filled parts of a toy containing small parts	N/A
(c)	fibrous filling material	N/A
5.3	Plastic sheeting	N/A
5.4	Cord, chains and electrical cables in toys	PASS
5.4.1	General	PASS
5.4.2	Cords and chains in toys intended for children under 18 months	PASS
5.4.3	Cords and chains in toys intended for children of 18 months or over but under 36 months	PASS
5.4.4	Fixed loops, tangled loops and nooses	PASS
5.4.5	Cords and chains on pull along toys	N/A
5.4.6	Electrical cables	N/A
5.4.7	Cross-sectional dimension of certain cords	N/A
5.4.8	Self-retracting cords	N/A
5.4.9	Toys attached to or intended to be strung across a cradle, cot or perambulator	N/A
5.5	Liquid-filled toys	N/A
5.6	Speed limitation of electrically-driven ride-on toys	N/A
5.7	Glass and porcelain	N/A
5.8	Shape and size of certain toys	N/A
5.9	Toys comprising monofilament fibres	N/A
5.10	Small balls	N/A
5.11	Play figures	N/A
5.12	Hemispheric-shaped toys	N/A
5.13	Suction cups	N/A
5.14	Straps intended to be worn fully or partially around the neck	N/A
5.15	Sledges with cords for pulling	N/A

STQ Testing Services Co., Ltd.

Add.: Building 1, 15 Yinzhong Road, High-new district, Suzhou, China 215129

Tel.: +86/(0)512 67991866

Fax: +86/(0)512 87661802

Web: www.stq-cert.com

Technical service: TS@stq-cert.com

Customer service: CS@stq-cert.com

TEST REPORT

Reference No. : SZ2022050255-1E

Date : May. 16, 2022

Page No.: 14 of 25

Test Items	Test Results
	1#
6. Packaging	PASS

Test Items	Test Results
	1#
7. Warnings, markings and instructions for use Tracking information [CE/UKCA mark, importer / manufacturer mark (name, address), product identification]	SEE REMARK
7.1 General	N/A
7.2 Toys not intended for children under 36 months	N/A
7.3 Latex balloons	N/A
7.4 Aquatic toys	N/A
7.5 Functional toys	N/A
7.6 Hazardous sharp functional edges and points	N/A
7.7 Projectiles toys	N/A
7.8 Imitation protective masks and helmets	N/A
7.9 Toy kites	N/A
7.10 Roller skates, inline skates, skateboards and certain other ride-on toys	N/A
7.12 Toys intended to be strung across a cradle,cot,or perambulator	N/A
7.12 Liquid filled tethers	N/A
7.13 Percussion caps specifically designed for use in toys	N/A
7.14 Acoustics	N/A
7.15 Toys bicycle	N/A
7.16 Toys intended to bear the mass of a child	N/A
7.17 Toys comprising monofilament fibers	N/A
7.18 Toy scooters	N/A
7.19 Rocking horses and similar toys	N/A
7.20 Magnetic/electrical experimental sets	N/A
7.22 Toys with electrical cables exceeding 300mm in length	N/A
7.22 Toys with cords or chains intended for children of 18 months and over but under 36 months	N/A
7.23 Toys intended to be attached to a cradle, cot or perambulator	N/A
7.24 Sledges with cords for pulling	N/A
7.25 Flying toys	N/A

STQ Testing Services Co., Ltd.

Add.: Building 1, 15 Yinzhong Road, High-new district, Suzhou, China 215129

Tel.: +86/(0)512 67991866

Fax: +86/(0)512 87661802

Web: www.stq-cert.com

Technical service: TS@stq-cert.com

Customer service: CS@stq-cert.com

TEST REPORT

Reference No. : SZ2022050255-1E

Date : May. 16, 2022

Page No.: 15 of 25

7.26	Improvised projectiles	N/A
------	------------------------	-----

Remark: It is drawn to your attention that the product identification number, name and address of manufacturer and importer in UK country together with CE/UKCA-marking should appear as specified in Toys (Safety) Regulations 2011

5. British Standard-Safety of Toys: BS EN71 Part 2: 2020-Flammability Toys (Safety) Regulations 2011

Test Items	Test Results
	1#
4.1 General Requirements	PASS
4.2 Toys to be worn on the head	N/A
4.3 Toy disguise costumes and toys intended to be worn by a child in play	N/A
4.4 Toys intended to be entered by a child	N/A
4.5 Soft filled toys	N/A

***** To be continued *****

STQ Testing Services Co., Ltd.

Add.: Building 1, 15 Yinzhu Road, High-new district, Suzhou, China 215129

Tel.: +86/(0)512 67991866

Fax: +86/(0)512 87661802

Web: www.stq-cert.com

Technical service: TS@stq-cert.com

Customer service: CS@stq-cert.com

TEST REPORT

Reference No. : SZ2022050255-1E

Date : May. 16, 2022

Page No.: 16 of 25

6. Migration of certain elements

Test Method:

Extractable Chromium(VI): With reference to BS EN 71-3:2019+A1:2021, analysis was performed by IC-ICP-MS.

Extractable Chromium(III): With reference to BS EN 71-3:2019+A1:2021, calculated by subtracting the Chromium (VI) concentration from the total chromium concentration.

Other Elements: With reference to BS EN 71-3:2019+A1:2021, analysis was performed by ICP-MS.

Extractable Organic Tin: With reference to BS EN 71-3:2019+A1:2021, analysis was performed by GC-MS.

Test Item(s)	Unit	MDL	Result				Category III
			2#	3#	4#	5#	
Extractable Lead (Pb)	mg/kg	10	N.D.	N.D.	N.D.	N.D.	23
Extractable Antimony (Sb)	mg/kg	10	N.D.	N.D.	N.D.	N.D.	560
Extractable Arsenic (As)	mg/kg	10	N.D.	N.D.	N.D.	N.D.	47
Extractable Barium (Ba)	mg/kg	50	N.D.	N.D.	N.D.	N.D.	18750
Extractable Cadmium (Cd)	mg/kg	10	N.D.	N.D.	N.D.	N.D.	17
Extractable Chromium (III) (Cr III)	mg/kg	5	N.D.	N.D.	N.D.	N.D.	460
Extractable Chromium (VI)(Cr VI)	mg/kg	0.05	N.D.	N.D.	N.D.	N.D.	0.053
Extractable Mercury (Hg)	mg/kg	10	N.D.	N.D.	N.D.	N.D.	94
Extractable Selenium (Se)	mg/kg	10	N.D.	N.D.	N.D.	N.D.	460
Extractable Boron (B)	mg/kg	50	N.D.	N.D.	N.D.	N.D.	15000
Extractable Cobalt (Co)	mg/kg	10	N.D.	N.D.	N.D.	N.D.	130
Extractable Manganese (Mn)	mg/kg	50	N.D.	N.D.	N.D.	N.D.	15000
Extractable Strontium (Sr)	mg/kg	50	N.D.	N.D.	N.D.	N.D.	56000
Extractable Tin (Sn)	mg/kg	5	N.D.	N.D.	N.D.	N.D.	180000
Extractable Zinc (Zn)	mg/kg	50	N.D.	N.D.	N.D.	225	46000
Extractable Copper (Cu)	mg/kg	50	N.D.	N.D.	N.D.	N.D.	7700
Extractable Aluminum (Al)	mg/kg	50	N.D.	N.D.	N.D.	N.D.	28130
Extractable Nickel (Ni)	mg/kg	10	N.D.	N.D.	N.D.	N.D.	930
Extractable Organic Tin	mg/kg	0.02	N.D.	N.D.	N.D.	N.D.	12

STQ Testing Services Co., Ltd.

Add.: Building 1, 15 Yinzhong Road, High-new district, Suzhou, China 215129

Tel.: +86/(0)512 67991866

Fax: +86/(0)512 87661802

Web: www.stq-cert.com

Technical service: TS@stq-cert.com

Customer service: CS@stq-cert.com

TEST REPORT

Reference No. : SZ2022050255-1E

Date : May. 16, 2022

Page No.: 17 of 25

Test Item(s)	Unit	MDL	Result			Category III
			6#	7#	8#	
Extractable Lead (Pb)	mg/kg	10	N.D.	N.D.	N.D.	23
Extractable Antimony (Sb)	mg/kg	10	N.D.	N.D.	N.D.	560
Extractable Arsenic (As)	mg/kg	10	N.D.	N.D.	N.D.	47
Extractable Barium (Ba)	mg/kg	50	N.D.	N.D.	N.D.	18750
Extractable Cadmium (Cd)	mg/kg	10	N.D.	N.D.	N.D.	17
Extractable Chromium (III) (Cr III)	mg/kg	5	N.D.	N.D.	N.D.	460
Extractable Chromium (VI)(Cr VI)	mg/kg	0.05	N.D.	N.D.	N.D.	0.053
Extractable Mercury (Hg)	mg/kg	10	N.D.	N.D.	N.D.	94
Extractable Selenium (Se)	mg/kg	10	N.D.	N.D.	N.D.	460
Extractable Boron (B)	mg/kg	50	N.D.	N.D.	N.D.	15000
Extractable Cobalt (Co)	mg/kg	10	N.D.	N.D.	N.D.	130
Extractable Manganese (Mn)	mg/kg	50	N.D.	N.D.	N.D.	15000
Extractable Strontium (Sr)	mg/kg	50	N.D.	N.D.	N.D.	56000
Extractable Tin (Sn)	mg/kg	5	N.D.	N.D.	N.D.	180000
Extractable Zinc (Zn)	mg/kg	50	N.D.	N.D.	N.D.	46000
Extractable Copper (Cu)	mg/kg	50	N.D.	N.D.	N.D.	7700
Extractable Aluminum (Al)	mg/kg	50	N.D.	N.D.	N.D.	28130
Extractable Nickel (Ni)	mg/kg	10	N.D.	N.D.	N.D.	930
Extractable Organic Tin	mg/kg	0.02	N.D.	N.D.	N.D.	12

STQ Testing Services Co., Ltd.

Add.: Building 1, 15 Yinzhu Road, High-new district, Suzhou, China 215129

Tel.: +86/(0)512 67991866

Fax: +86/(0)512 87661802

Web: www.stq-cert.com

Technical service: TS@stq-cert.com

Customer service: CS@stq-cert.com

TEST REPORT

Reference No. : SZ2022050255-1E

Date : May. 16, 2022

Page No.: 18 of 25

Limited Value for migration of certain elements:

Test Item(s)	Unit	Limited Value**		
		Category I	Category II	Category III
Extractable Lead (Pb)	mg/kg	2.0	0.5	23
Extractable Antimony (Sb)	mg/kg	45	11.3	560
Extractable Arsenic (As)	mg/kg	3.8	0.9	47
Extractable Barium (Ba)	mg/kg	1500	375	18750
Extractable Cadmium (Cd)	mg/kg	1.3	0.3	17
Extractable Chromium (III) (Cr III)	mg/kg	37.5	9.4	460
Extractable Chromium (VI) (Cr VI)	mg/kg	0.02	0.005	0.053
Extractable Mercury (Hg)	mg/kg	7.5	1.9	94
Extractable Selenium (Se)	mg/kg	37.5	9.4	460
Extractable Boron (B)	mg/kg	1200	300	15000
Extractable Cobalt (Co)	mg/kg	10.5	2.6	130
Extractable Manganese (Mn)	mg/kg	1200	300	15000
Extractable Strontium (Sr)	mg/kg	4500	1125	56000
Extractable Tin (Sn)	mg/kg	15000	3750	180000
Extractable Zinc (Zn)	mg/kg	3750	938	46000
Extractable Copper (Cu)	mg/kg	622.5	156	7700
Extractable Aluminum (Al)	mg/kg	2250	560	28130
Extractable Nickel (Ni)	mg/kg	75	18.8	930
Extractable Organic Tin	mg/kg	0.9	0.2	12

Remark: **The Limited value is based on European Directive 2009/48/EC and its subsequent amendments and BS EN 71-3:2019+A1:2021, Toys (Safety) Regulations 2011.

Category I: Dry, brittle, powder-like or pliable materials

Category II: Liquid or sticky materials

Category III: Scrapped-off materials

- Note :**
- 1) % = Percentage by weight.
 - 2) N.D. = Not detected, less than MDL.
 - 3) "---" = Not Regulated.
 - 4) MDL = Method Detection Limit.

STQ Testing Services Co., Ltd.

Add.: Building 1, 15 Yinzhu Road, High-new district, Suzhou, China 215129

Tel.: +86/(0)512 67991866

Fax: +86/(0)512 87661802

Web: www.stq-cert.com

Technical service: TS@stq-cert.com

Customer service: CS@stq-cert.com

TEST REPORT

Reference No. : SZ2022050255-1E

Date : May. 16, 2022

Page No.: 19 of 25

Test Part Description:

1# Slide

3# Yellow plastic

5# Green plastic

7# Grey plastic body

2# Pale pink plastic

4# Dark blue plastic

6# White plastic body

8# Yellow net rope

PRODUCT PHOTOS



Name : Slide

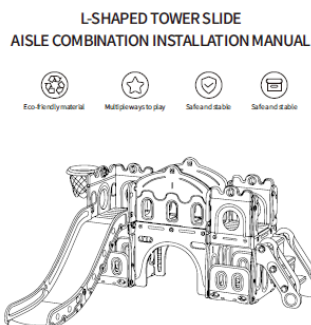
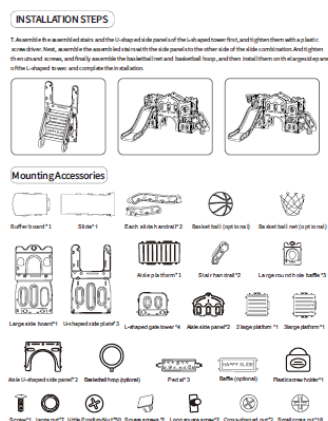
Model No : FE-HT-LXC

Company : Yongjia FeiQi Toy Co., Ltd

Address : Bali,Qiaoxia Town,Yongjia County,Wenzhou City,Zhejiang
Province,China

Date of Manufacture : 2022.4

Recommend for children 12 months up



Please read this manual carefully before use
Note: This product is recommended to be installed by adults
 and should be checked for proper installation before use
 Please save it for future reference

STQ Testing Services Co., Ltd.

Add.: Building 1, 15 Yinzhu Road, High-new district, Suzhou, China 215129

Tel.:+86/(0)512 67991866

Fax: +86/(0)512 87661802

Web: www.stq-cert.com

Technical service: TS@stg-cert.com

Customer service: CS@stg-cert.com

TEST REPORT

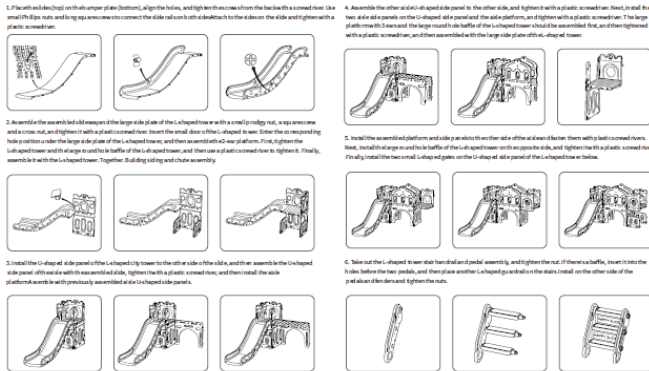
Reference No. : SZ2022050255-1E

Date : May. 16, 2022

Page No.: 20 of 25

L-SHAPED CASTLE TOWER SLIDE AISLE COMBINATION INSTALLATION MANUAL

INSTALLATION STEPS



REFERENCE PHOTOS

The photos were submitted by the client, only for reference.



TEST REPORT

Reference No. : SZ2022050255-1E

Date : May. 16, 2022

Page No.: 21 of 25



STQ Testing Services Co., Ltd.

Add.: Building 1, 15 Yinzu Road, High-new district, Suzhou, China 215129

Tel.: +86/(0)512 67991866

Fax: +86/(0)512 87661802

Web: www.stq-cert.comTechnical service: TS@stq-cert.comCustomer service: CS@stq-cert.com

TEST REPORT

Reference No. : SZ2022050255-1E

Date : May. 16, 2022

Page No.: 22 of 25



STQ Testing Services Co., Ltd.

Add.: Building 1, 15 Yinzhu Road, High-new district, Suzhou, China 215129

Tel.: +86/(0)512 67991866

Fax: +86/(0)512 87661802

Web: www.stq-cert.comTechnical service: TS@stq-cert.comCustomer service: CS@stq-cert.com

TEST REPORT

Reference No. : SZ2022050255-1E

Date : May. 16, 2022

Page No.: 23 of 25



***** END OF REPORT *****



TEST REPORT

Reference No. : SZ2022050255-1E

Date : May. 16, 2022

Page No.: 24 of 25

GENERAL CONDITIONS OF SERVICES

STQ Testing Services Co.,Ltd. (hereinafter "STQ"), The testing or examining under the request of the customer should obey terms as follow, according to regulation of "Contract Law of the People's Republic of China" on processing and undertaking contract, our company have legal right of termination without any reason and have the right to accept or refuse testing or examining request:

1. STQ only acts for the person or body originating the instructions (the "Clients"). No other party is entitled to give instructions, particularly on the scope of testing or delivery of report or certificate, unless authorized by the Clients.
2. Sample recycling: when the testing or examining is finished, the customer should recycle the sample. Within 30 days after issuing of testing report, if the customer could not recycle the sample or send notification of sample recycling in written (for example, if the sample belongs to consumables, toxic drugs, dangerous goods and other items that are not suitable for long-term storage, such as semi-finished products and fragile samples such as liquids and powders, the retention period will be shortened to 7 days). After the retention period, STQ has the right to dispose of the sample arbitrarily without paying compensation or compensation to the customer and take no responsibility for the consequences that damages the customer's trade secrets and intellectual property rights due to the loss of the sample.
3. The delivery and return fee of the samples which need to do testing at STQ should be paid by the client. STQ will not bear the responsibility for the testing error that is caused by transporting, packaging and labelling.
4. The Clients shall always comply with the following before or during STQ providing its services:
 - a) provide sample(s) and relevant data, at the same time, guarantee the consistence of the sample(s)' name they declared with the sample(s) or the goods provided. Otherwise, STQ will not bear any relevant responsibilities;
 - b) giving timely instructions and adequate information to enable STQ to perform the services effectively;
 - c) supply, when requested by STQ, any equipment and personnel for the performance of the services;
 - d) take all necessary steps to eliminate or remedy any obstruction in the performance of the services;
 - e) inform STQ in advance of any hazards or dangers, actual or potential, associated with any order of samples or testing;
 - f) provide all necessary access for STQ's representative to enable the required services to be performed effectively;
 - g) ensure all essential steps are taken for safety of working conditions, sites and installations during the performance of services;
 - h) fully discharge all its liabilities under any contract like sales contract with a third party, whether or not a report or certificate has been issued by STQ, failing which STQ shall be under no obligation to the Clients.
5. Subject to STQ's accepting the Client's instructions, STQ will issue reports or certificates which reflect statements of opinion made with due care within the scope of instructions but STQ is not obliged to report upon any facts outside the instructions, if there were any dissidence about the report or certificate, the Client should provide the written declaration to STQ within 15 days after the date receiving the report or certificate, otherwise, STQ will not hear the case after the date limit.
6. STQ is irrevocably authorized by the Clients to deliver at its discretion the report or the certificate to any third party when instructed by the Clients or where it implicitly follows from circumstances, trade custom, usage or practice as determined by STQ.
7. A test report will be issued in confidence to the Clients and it will be strictly treated as such by STQ. It may not be reproduced either in its entirety or in part and it may not be used for advertising or other unauthorized purposes without the written consent of STQ. The Clients to whom the Report is issued may, however, show or send it, or a certified copy thereof prepared by STQ, to his customer, supplier or other persons directly concerned. STQ will not, without the consent of the Clients, enter into any discussion or correspondence with any third party concerning the contents of the report unless required by the relevant governmental authorities, laws or court orders.
8. Applicants wishing to use STQ's reports in court proceedings or arbitration shall inform STQ to that effect prior to submitting the sample for testing.
9. The report will refer only to the sample tested and will not apply to the bulk, unless the sampling has been carried out by STQ and is stated as such in the Report. Also, the report is only for reference.
10. Any documents containing engagements between the Clients and third parties like contracts of sale, letters of credit, bills of lading, etc. are regarded as information for STQ only and do not affect the scope of the services or the obligations accepted by STQ.
11. If the Clients do not specify the methods/standards to be applied, STQ will choose the appropriate ones and further information regarding the methods can be obtained by direct contact with STQ, for the in-house method, STQ will only provide the summary.
12. No liability shall be incurred by and no claim shall be made against STQ or its servants, agents, employees or independent contractors in respect of any loss or damage to any such materials, equipment and property occurring whilst at STQ or any work places in which the testing is carried out, or in the course of transit to or from STQ or the said work places, whether or not resulting from any acts, neglect or default on the part of any such servants, agents, employees or independent contractors of STQ.
13. STQ will not be liable, or accept responsibility for any loss or damage howsoever arising from the use of information contained in any of its reports or in any communication whatsoever about its said tests or investigations.
14. Except for term 11 and term 12, if the test sample is damaged due to the negligence of ZOTAC, the total compensation for loss and damage to the sample or loss to the customer shall not exceed twice of the test service fee.
15. In the event of STQ prevented by any cause outside STQ's control from performing any service for which an order has been given or an agreement made, the Clients shall pay to STQ:
 - a) the amount of all abortive expenditure actually made or incurred;
 - b) a proportion of the agreed fee or commission equal to the proportion (if any) of the service actually carried out by STQ, and STQ shall be relieved of all responsibility whatsoever for the partial or total non-performance of the required service.

STQ Testing Services Co., Ltd.

Add.: Building 1, 15 Yinzhu Road, High-new district, Suzhou, China 215129

Tel.: +86/(0)512 67991866

Fax: +86/(0)512 87661802

Web: www.stq-cert.com

Technical service: TS@stq-cert.com

Customer service: CS@stq-cert.com



TEST REPORT

Reference No. : SZ2022050255-1E

Date : May. 16, 2022

Page No.: 25 of 25

16. STQ shall be discharged from all liabilities for all claims for loss, damage or expense unless suit is brought within one calendar year after the date of the performance by STQ of the service relating to the claim or in the event of any alleged non—performance within one year of the date when such service should have been completed.
17. The Clients acknowledge that STQ does not, either by entering into a contract or by performing service, assume or undertake to discharge any duty of the Clients to any other persons. STQ is neither an insurer nor a guarantor and disclaims all liability in such capacity.
18. The Clients shall hold harmless and indemnify STQ and its officers, employees, agents or independent contractors against all claims made by any third party for loss, damage or expense of whatsoever nature including reasonable legal expenses relating to the performance or non- performance of any services to the extent that the aggregate of any such claims relating to any one service exceed the limits mentioned in Clause 13.
19. Any unauthorized alteration, forgery or falsification of the content or appearance of the report/certificate is unlawful and offenders may be prosecuted to the fullest extent of the law; in the event of improper use of the report, STQ reserves the right to withdraw it, and to adopt any other measures which may be appropriate.
20. Samples are deposited with and accepted by STQ on the basis that either they are insured by the Clients or the Clients assumes entire responsibility for loss through fire, theft, burglary or for damages arising in the course of analysis or handling, without recourse whatsoever to STQ or its servants, agent, employees or independent contractors.
21. If the requirements of the Clients require the analysis of samples by the Clients' or any third party's laboratory, STQ will only convey the result of the analysis without responsibility for its accuracy. If STQ is only able to witness an analysis by the Clients' or any third Party's laboratory STQ will only confirm that the correct sample has been analyzed without responsibility for the accuracy of any analysis or results.
22. In the event of any unforeseen additional time or costs being incurred in the course of carrying out any of its services, STQ shall be entitled to charge the Clients additional fees to reflect the additional time and costs incurred.
23. All rights (including but not limited to copyright) in any reports, certificates or other materials produced by STQ in the course of providing its services shall remain vested in STQ.
24. Unless otherwise agreed in written, payment should be arranged within 10 days after the invoice date or the debit note date. If the payment is overdue, the overdue penalty shall be calculated at 1% per day of the unpaid part till the actual payment date. All expenses, costs and losses incurred by STQ as a result of collecting or claiming the fees owed shall be borne by the customer, including but not limited to attorney fees, litigation fees, preservation fees, preservation guarantee fees, travel expenses, etc.
25. Test results may be transmitted by electronic means at the Client's request. However, it should be noted that electronic transmission cannot guarantee the information contained will not be lost, delayed or intercepted by third party. STQ is not liable for any disclosure, error or omission in the content of such messages as a result of electronic transmission.
26. If necessary, STQ may subcontract part of or all tests to competent subcontractors. If no objection is raised at the time of the Clients submitting the application, STQ shall assume the Client's approval.
27. This report/certificate does not relieve sellers/suppliers from their contractual responsibility with regards to the quality/quantity of this delivery nor does it prejudice the Client's right to claim towards sellers/suppliers for compensation for any apparent and/or hidden defects not detected during STQ's random inspection or testing or audit.
28. The testing data and result(s) in this report is(are) just for scientific research, education, internal quality control and product development etc.
29. STQ reserves the right to include Special Conditions in addition to the foregoing General Conditions if warranted by the particular circumstances of the required test or investigation [this clause is only effective when the other party has been informed].
30. The foregoing General Conditions shall in all respects be governed, construed, interpreted and operated in accordance with the relevant Chinese laws and regulations. Unless otherwise agreed, the arbitration shall take place in P. R. C
31. These General Condition have been drafted in Chinese and may be translated into other languages. In the event of any discrepancy, the Chinese version shall prevail.
32. In general sample will be stored for 30 days. But for liquid, powder, etc semi-product & fragile product, it will be stored only for 7 days.

STQ Testing Services Co., Ltd.

Add.: Building 1, 15 Yinzhu Road, High-new district, Suzhou, China 215129

Tel.: +86/(0)512 67991866

Fax: +86/(0)512 87661802

Web: www.stq-cert.com

Technical service: TS@stq-cert.com

Customer service: CS@stq-cert.com