

<p style="text-align: center;">E8*129R03/07*13944*00</p> <p style="text-align: center;">Ningbo Cappi Tiger Children Products Co., Ltd.</p>	Type: KBH605S
	ID No.: 129-KBH605S-00
	Date: 2022-12-20
	Page 1 of 39

INFORMATION DOCUMENT

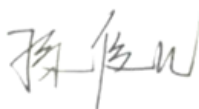
Of

UN REGULATION NO. 129.03 UNIFORM PROVISIONS CONCERNING THE APPROVAL OF: ENHANCED CHILD RESTRAINT SYSTEMS USED ON BOARD OF MOTOR VEHICLES (ECRS)

**FOR PRODUCT TYPE:
KBH605S**

Responsible person: Sun Juner

Ningbo Cappi Tiger Children Products Co., Ltd.




Ningbo Cappi Tiger Children Products Co., Ltd.	Type: KBH605S
	ID No.: 129-KBH605S-00
	Date: 2022-12-20
	Page 2 of 39

List of documentation

0. General.....3

1. Technical description.....3

Appendix 1: BOM LIST and Drawings.....5

Appendix 2: Label33

Appendix 3: Declaration on the toxicity and flammability of used materials.....34

Appendix 4: Manufacturer’s instruction manual for use.....35

Appendix 5: Packing info.....39



0. GENERAL**0.1 Make (trade name of manufacturer):**

Bbqool, Mega baby, Kingbaby, Bene baby, Martin nor, Moni, Lorelli, Minebaby, Cangaroo, Kiddo, Lionelo, Kindersafety, KENGA, BELLABABY, bebeglo, bebesit, BIUCO, Chipolino, Felcraft, kiddo, whoop, love, kidgo, prinsel, kiddy, bebglo, kenga, bellababy, bebeglo, SAFETY 1ST, INFANTI, Forsage kids, Beianbao, Kabihu, BBPRO, BBGO, baby kit's allobebe, TWIGY, Anakku, Action Baby, Kids Joy, Bambi. Mothercare, PRENATAL, Giordani, BABY MICHEL, Camera, BRITTON, GESSLEIN, LEAMAN, KRAFT, Baby & Plus, MamaLoes, SAFEWAY, MS, Infantia, LIKOBABY, CHELINO, HAPPY BABY, Lenox, BEBESIT, CUTEBABIES, BABY KIT'S, Infanti, Galzerano, CotoBaby, LOOPING, KinderKraft, IO BIMBO, AVANTI, COALA, BABY DESIGN, ESPIRO, BOMIKO, PRENATAL, COCCOLLE, TWINGO, BORSINO BABY, Lorelli, MS, Babyauto, More, Play, Kikkaboo, Cabino, Xadventure, Huggy, Prego, Sunnybaby, bebestars, Asalvo, Apollo, Speli, 4Baby, infababy, Titaniumbaby, Nuovita, OTOMO, baby tilly, Kari kids, Kari, CozyNsafe, Infababy, My Child, farfello, bebe 2 luxe, Babyton, Olsson, Ninia, Migo, Disney, Bonbijou, Koopers, Beblum, Crolla, Quinton, Royal Kiddy, Cocolatte, Babydoes, Soon Sung, MC, Mumzworld, Bebesit, Carestino, Kinderkraft, Kiddy, 4Kraft

0.2. Type:

KBH605S

0.2.1. Commercial description(s):

n.a.

0.2.2. Variant(s):

n.a.

0.5. Name and address of manufacturer:

Ningbo Cappi Tiger Children Products Co.,
Ltd.

No.17, Zhennan Road, Ditang Street,
Yuyao City, Zhejiang Province, China

0.7. In the case of components and separate technical units, location and method of affixing of ECE approval mark:

Sticker pasted on the back of product

0.8. Address(es) of assembly plant(s):

See 0.5.

0.9. Name and address of manufacturer's representative:

n.a.

1. TECHNICAL DESCRIPTION**1.1. ECRS category:**

i-Size (40-105cm);
i-Size booster seat (100-150cm)

1.2. ECRS class:

Integral (40-105cm);
Non-integral (100-150cm)

1.3. Size Range:

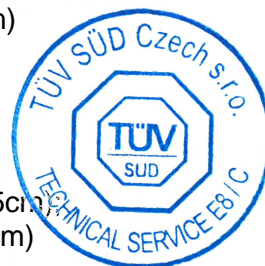
40-150cm

1.4. The maximum occupant mass allowed for Integral ECRS:

18kg

1.5. ECRS orientation:

Rearward facing (40-105cm)
Forward facing (76-150cm)



- | | | |
|-------|--|---|
| 1.6. | Anti-rotation device: | Top tether |
| 1.7. | Child Restraint Mode: | Harness belt (40-105cm);
adult safety-belt (100-150cm) |
| 1.8. | Locking-off device type: | n.a. |
| 1.9. | Type of retractor: | n.a. |
| 1.10. | Belt type: | adult safety-belt |
| 1.11. | Other features: | Chair assembly |
| 1.12. | Mass of the complete CRS: | 13.5 ± 0.5 kg |
| 1.13. | Installation method: | Rearward facing,
ISOFIX attachments + Top tether (40-105cm);



Forward facing,
ISOFIX attachments + Top tether (76-105cm);
ISOFIX attachments + adult safety-belt (100-150cm);
adult safety-belt (100-150cm) |
| 1.14. | Backrest positions: | Rearward facing,
40-105cm: Upright, Inclined (position "R1"-
"R5");

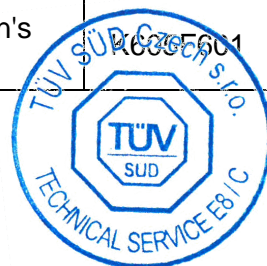
Forward facing,
76-150cm: Upright, Inclined (position "F1"-
"F5"). |
| 1.15. | Drawings, diagrams and markings of the ECRS, including all its relevant parts: | See Appendix 1, BOM LIST and Drawings |
| 1.16. | Declaration on toxicity in accordance with Paragraph 6.3.1.1. of UN R129.03: | See Appendix 3, Declaration on the toxicity and flammability of used materials |
| 1.17. | Declaration on flammability in accordance with Paragraph 6.3.1.2. of UN R129.03: | See Appendix 3, Declaration on the toxicity and flammability of used materials |
| 1.18. | Instruction for use of ECRS in the vehicle: | See Appendix 2, Labels;
See Appendix 4, Manufacturer's instruction manual;
See Appendix 5, Packing Info |



Appendix 1: BOM LIST and Drawings

- BOM LIST (Key Components)

No.	Picture	Name	Spec /Material	Manufacturer	DWG No.
1		headrest	HDPE	Ningbo Cappi Tiger Children Products Co., Ltd.	K605F403
2		Strap guide hook	PP	Ningbo Cappi Tiger Children Products Co., Ltd.	K605F410
3		Head on lock pin	POM	Ningbo Cappi Tiger Children Products Co., Ltd.	K605F412
4		Tie rod	POM	Ningbo Cappi Tiger Children Products Co., Ltd.	K605F413
5		Fixed block	PP	Ningbo Cappi Tiger Children Products Co., Ltd.	K605F414
6		Chair body	HDPE	Ningbo Cappi Tiger Children Products Co., Ltd.	K605F401
7		Rear cover	PP	Ningbo Cappi Tiger Children Products Co., Ltd.	K605F404
8		Side protection	PP	Ningbo Cappi Tiger Children Products Co., Ltd.	K605F422
9		base	HDPE	Ningbo Cappi Tiger Children Products Co., Ltd.	K605SF401
10		Rotating disk	PP	Ningbo Cappi Tiger Children Products Co., Ltd.	K605F405
11		Base cover	PP	Ningbo Cappi Tiger Children Products Co., Ltd.	K605SF402
12		Rotary lock	PA	Ningbo Cappi Tiger Children Products Co., Ltd.	K605F408
13		Buckle 2#	45#+PA	Anmin Auto Safety Parts (Wuxi) Co., Ltd.	KBH-02
14		Buckle 3#	45#+PA	Yuyaokecong plastic factory	KBH-03
15		Central regulator	45#	Yuyaokecong plastic factory	K001F909
16		tube	45#+Q235	Yuyao Yifeng Children's Supplies Factory	K605F401

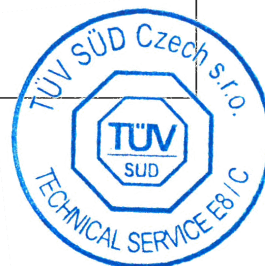
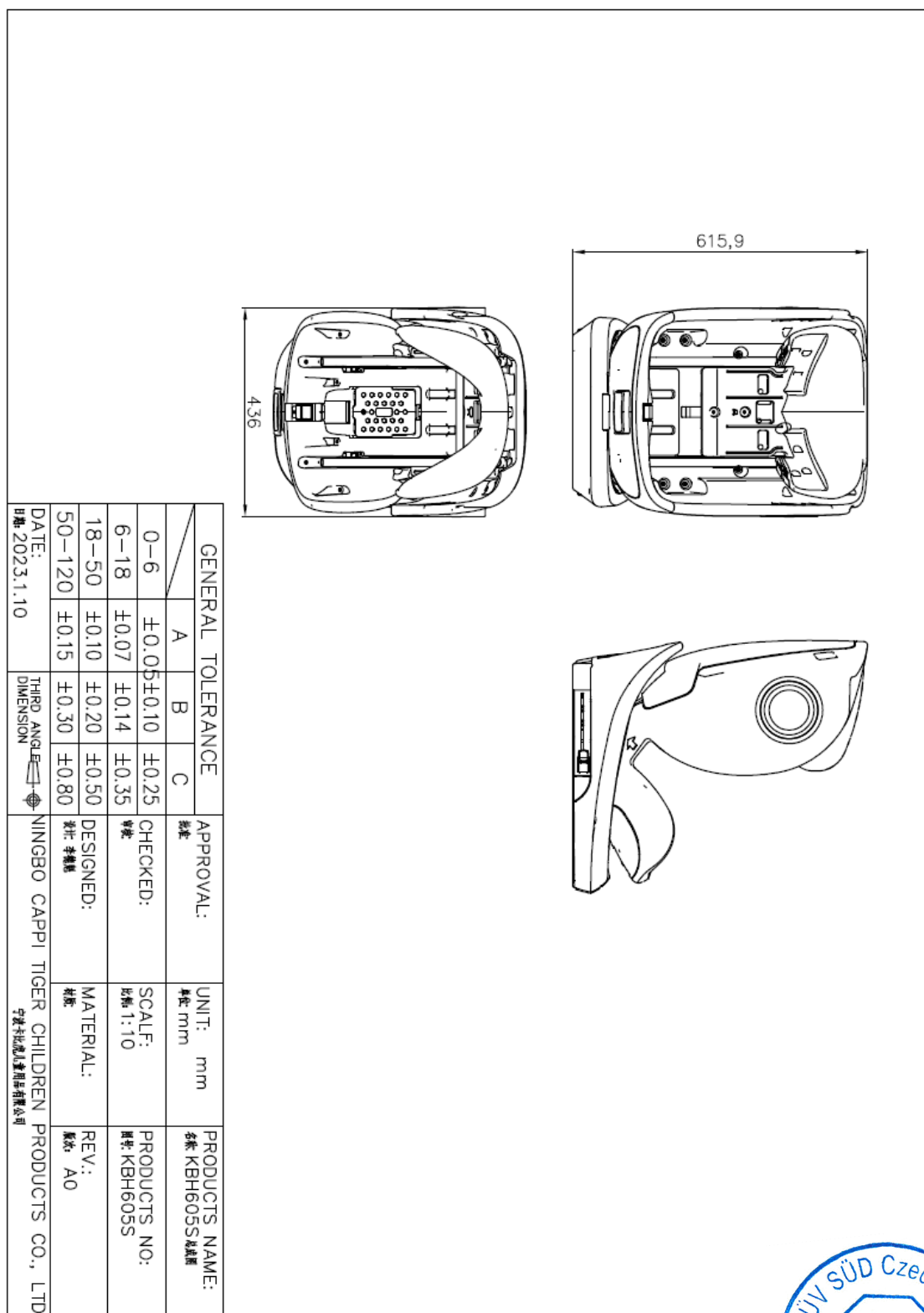


17		support	B510L	Ningbo Deyi Electronic Co., Ltd.	K605F604
18		ISOFIX assembly	PP+45#+ Q235	Ningbo Yinzhou Baijia Hardware Co., Ltd.	K605SF601
19		Top tether	Dacron+ 45#	TIANRUN SAFETY BELT CO., LTD	K605SF501
20		Harness assembly	-	TIANRUN SAFETY BELT CO.,LTD	K605F502

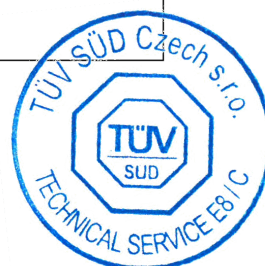
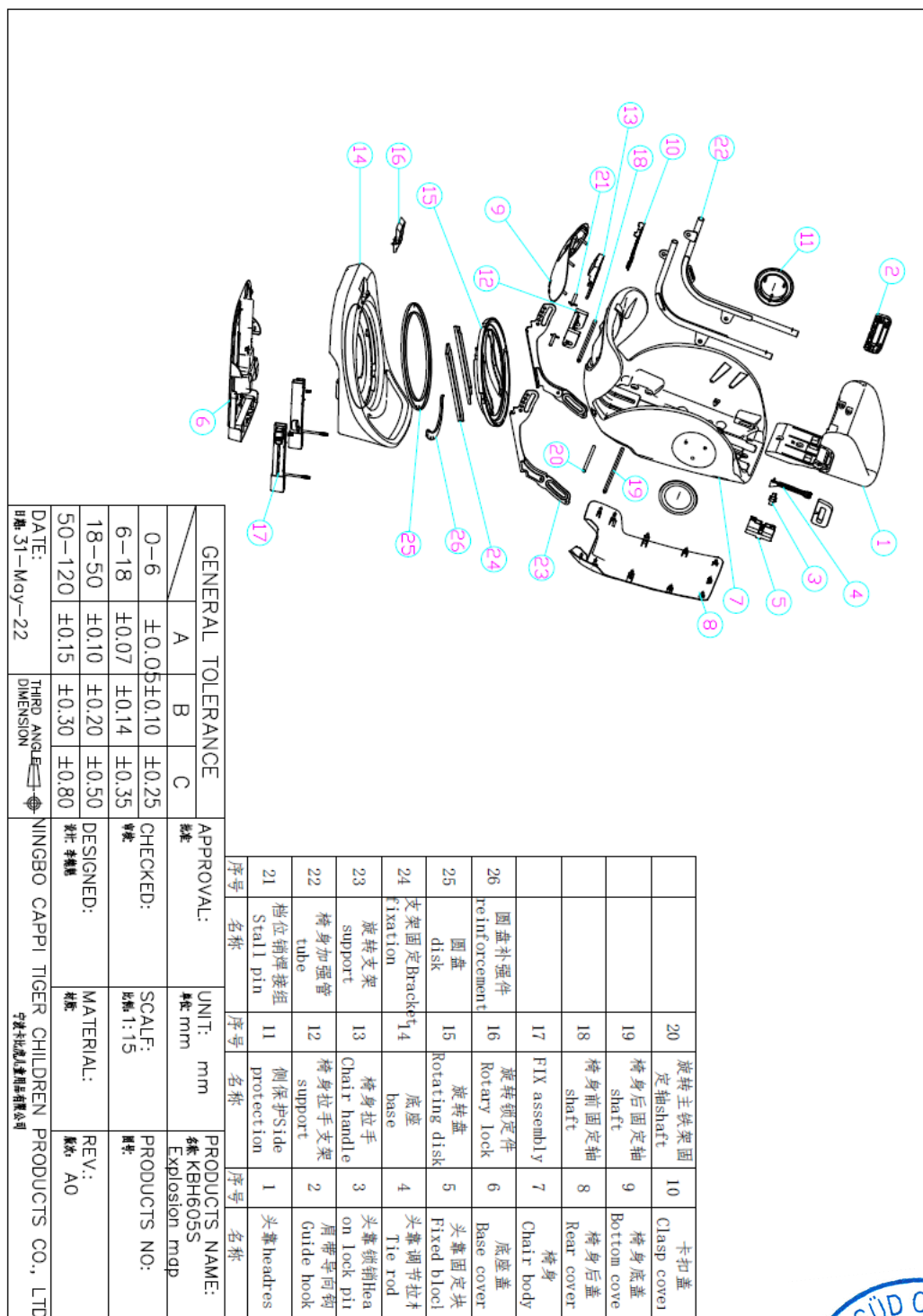


- Drawings

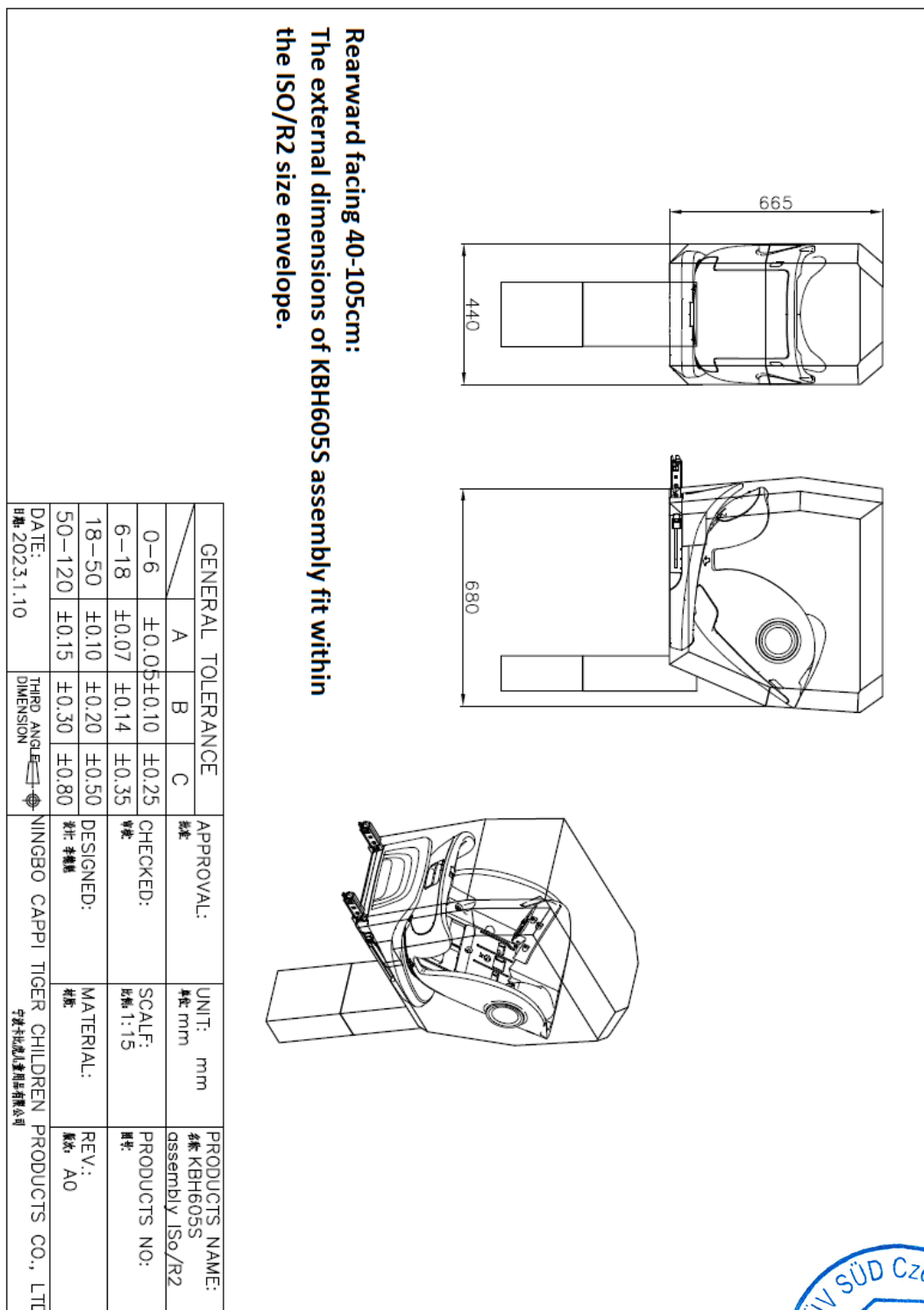
No. KBH605S, Assembly



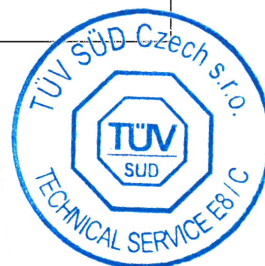
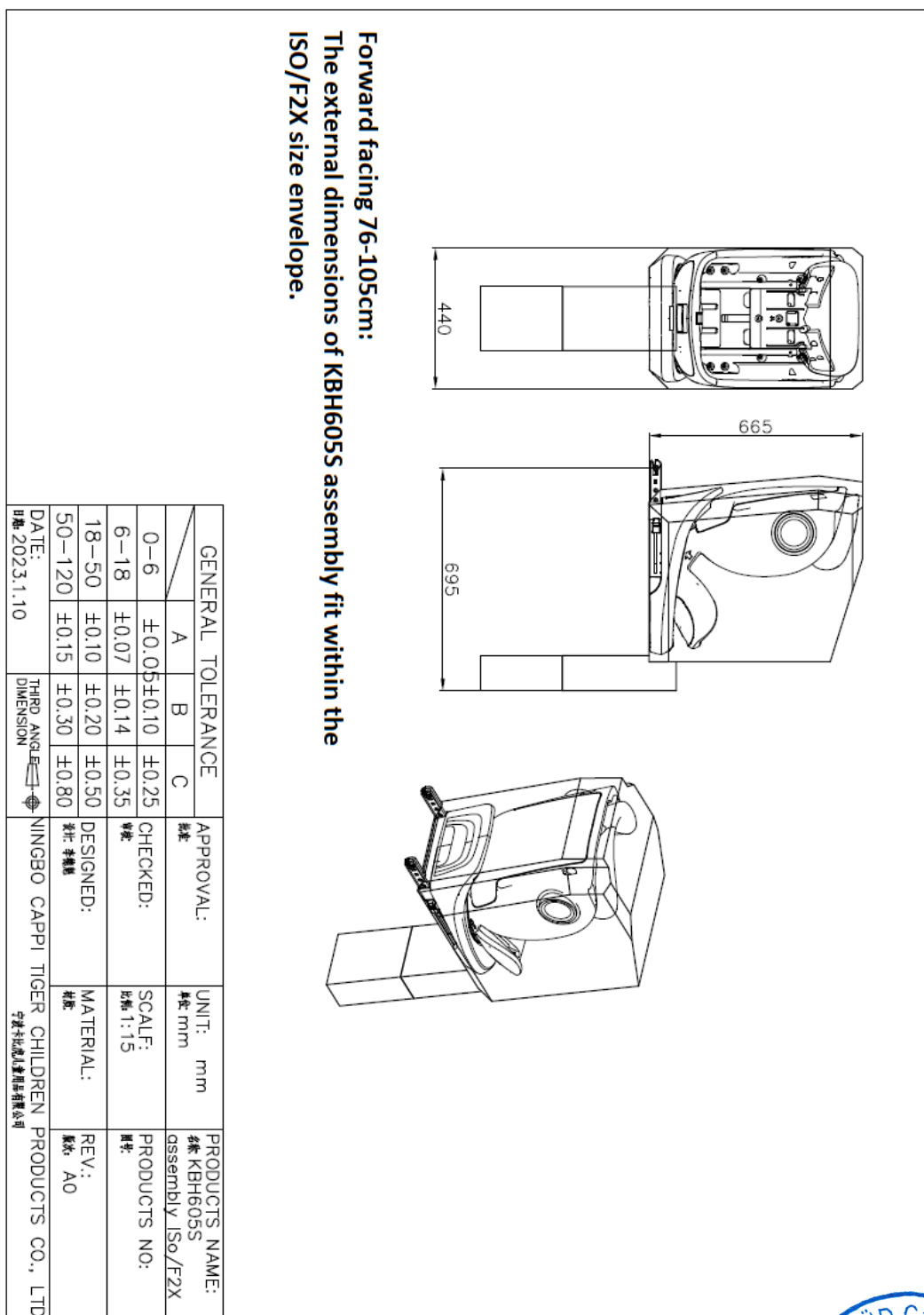
No. KBH605S, exploded view



No. KBH605S R2 size envelope, R2 envelope size

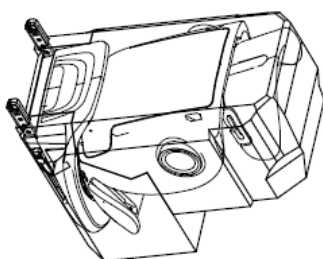
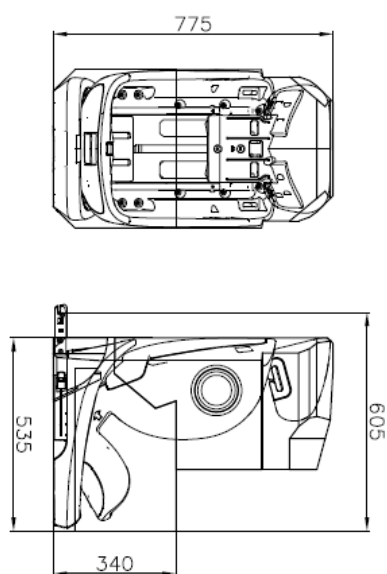


No. KBH605S F2x size envelope, F2x envelope size

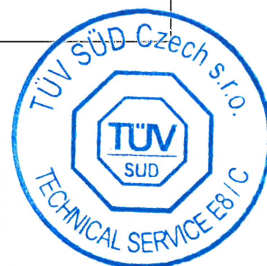


No. KBH605S B2 size envelope, B2 envelope size

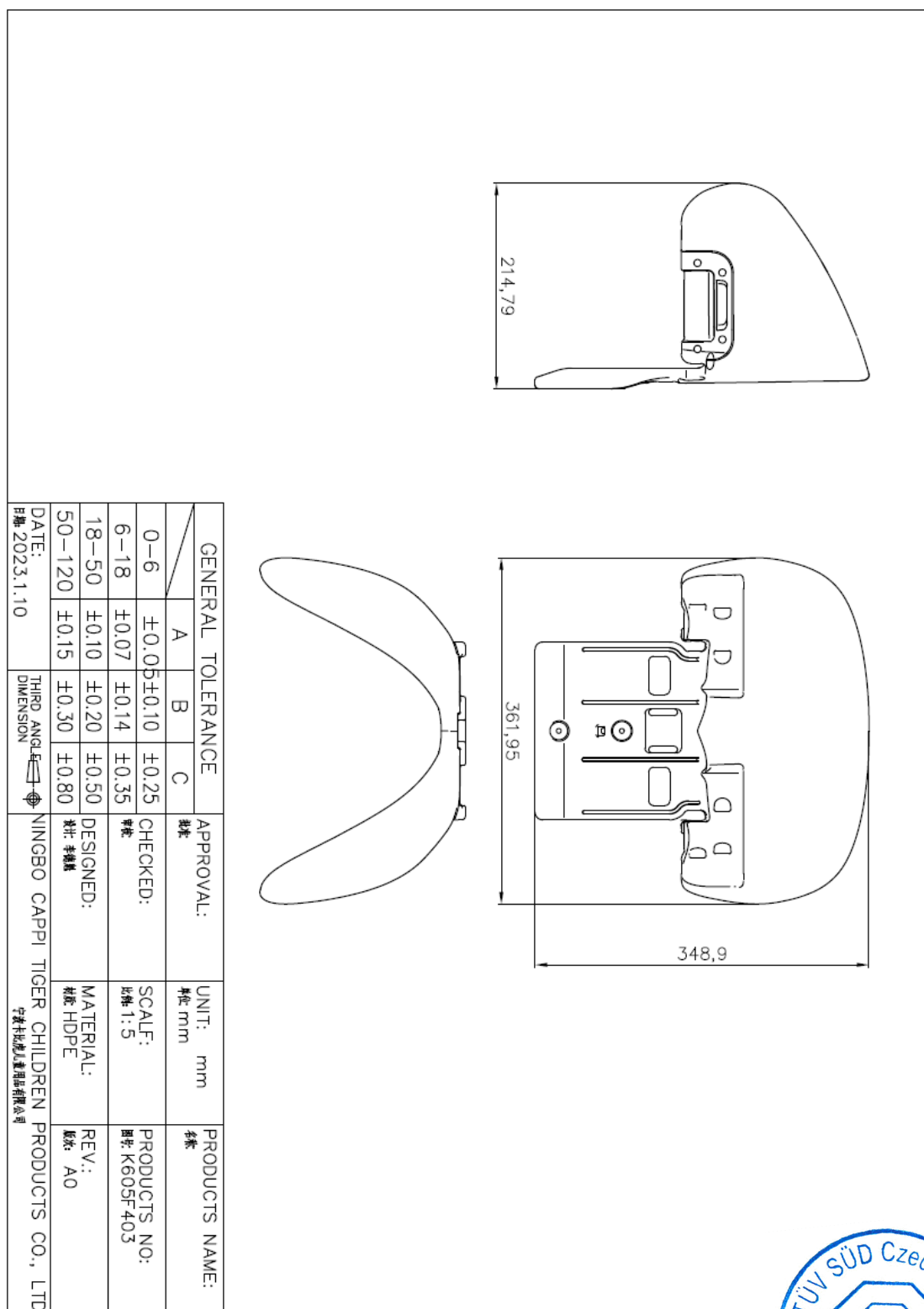
Forward facing 100-135cm:
The external dimensions of KBH605S assembly fit within the ISO/B2
size envelope.



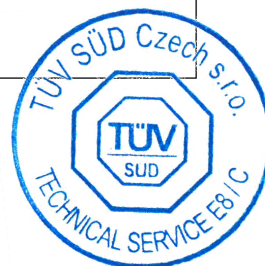
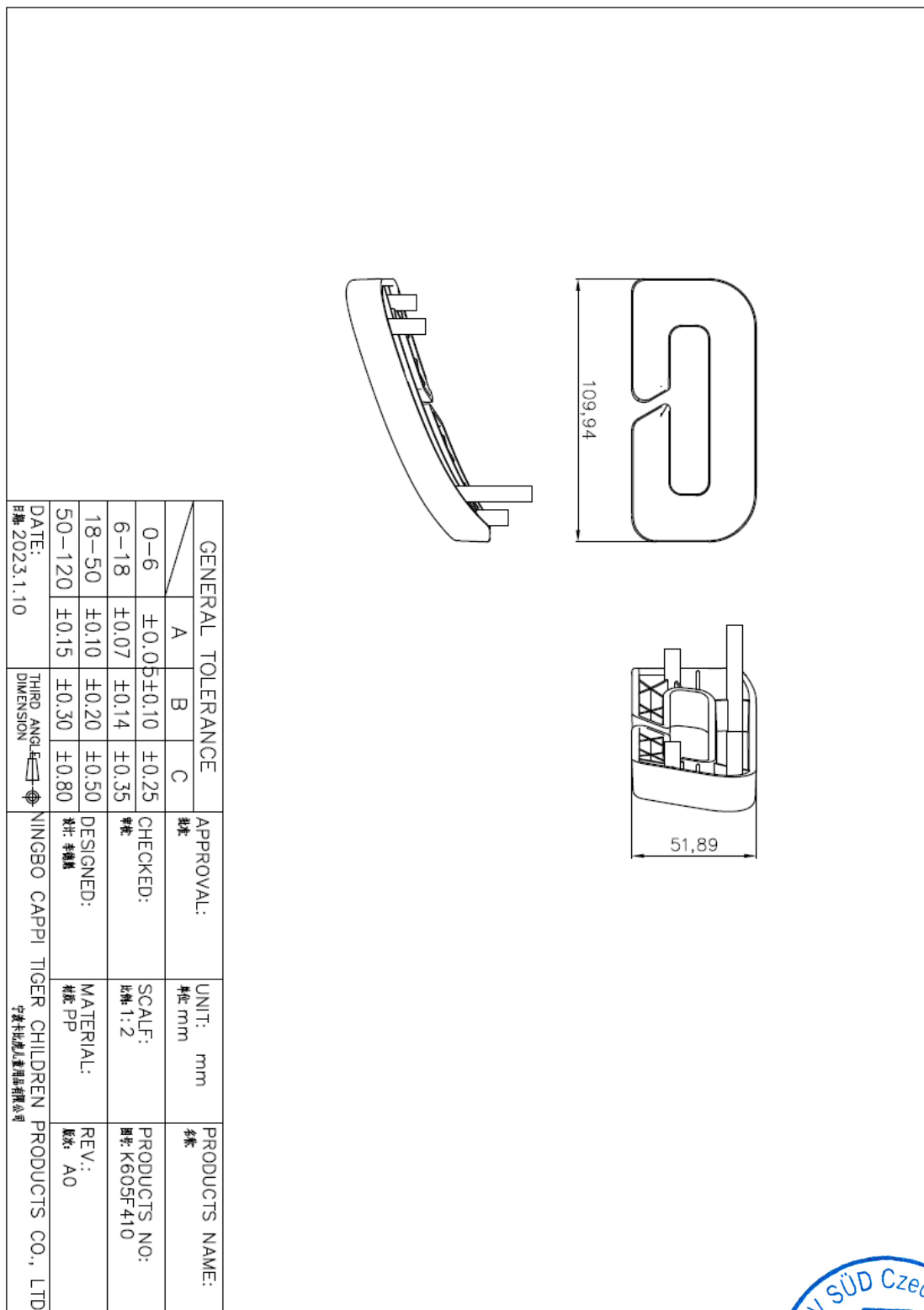
GENERAL TOLERANCE			APPROVAL:	UNIT:	PRODUCTS NAME:
	A	B	C	批准	名称 KBH605S
0-6	±0.05	±0.10	±0.25	单位 mm	名称 KBH605S
6-18	±0.07	±0.14	±0.35	CHECKED:	assembly / ISO/B2
18-50	±0.10	±0.20	±0.50	审核	PRODUCTS NO:
50-120	±0.15	±0.30	±0.80	DESIGNED:	材料
DATE:	THIRD ANGLE DIMENSION		NINGBO CAPPI TIGER CHILDREN PRODUCTS CO., LTD		
日期 2023.1.10			宁波卡比虎儿童用品有限公司		
					REV.: A0



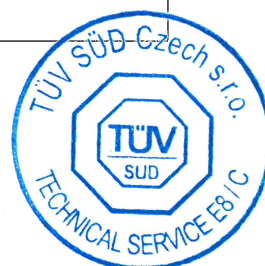
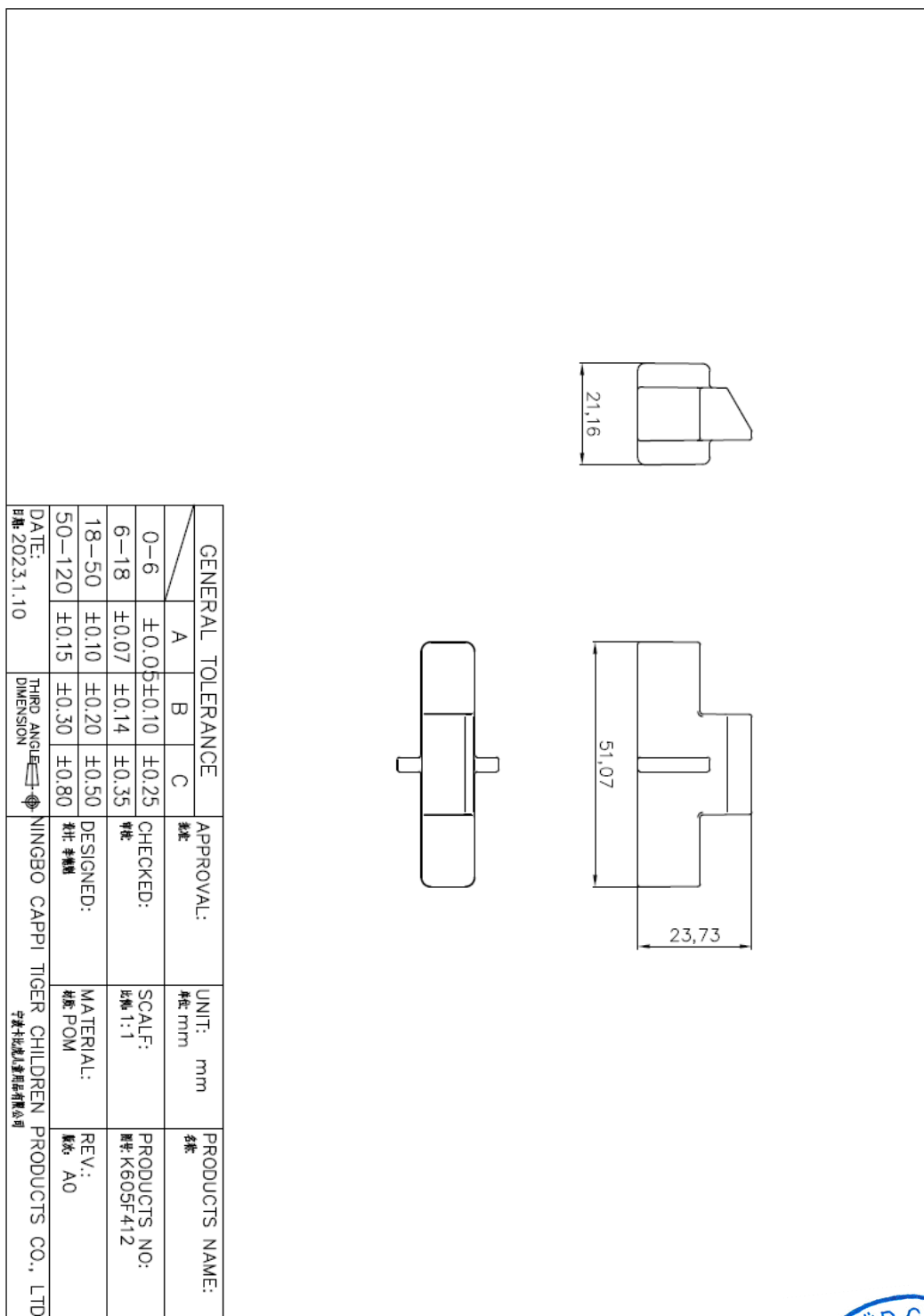
No. K605F403, headrest



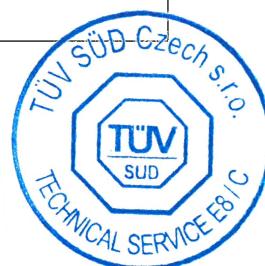
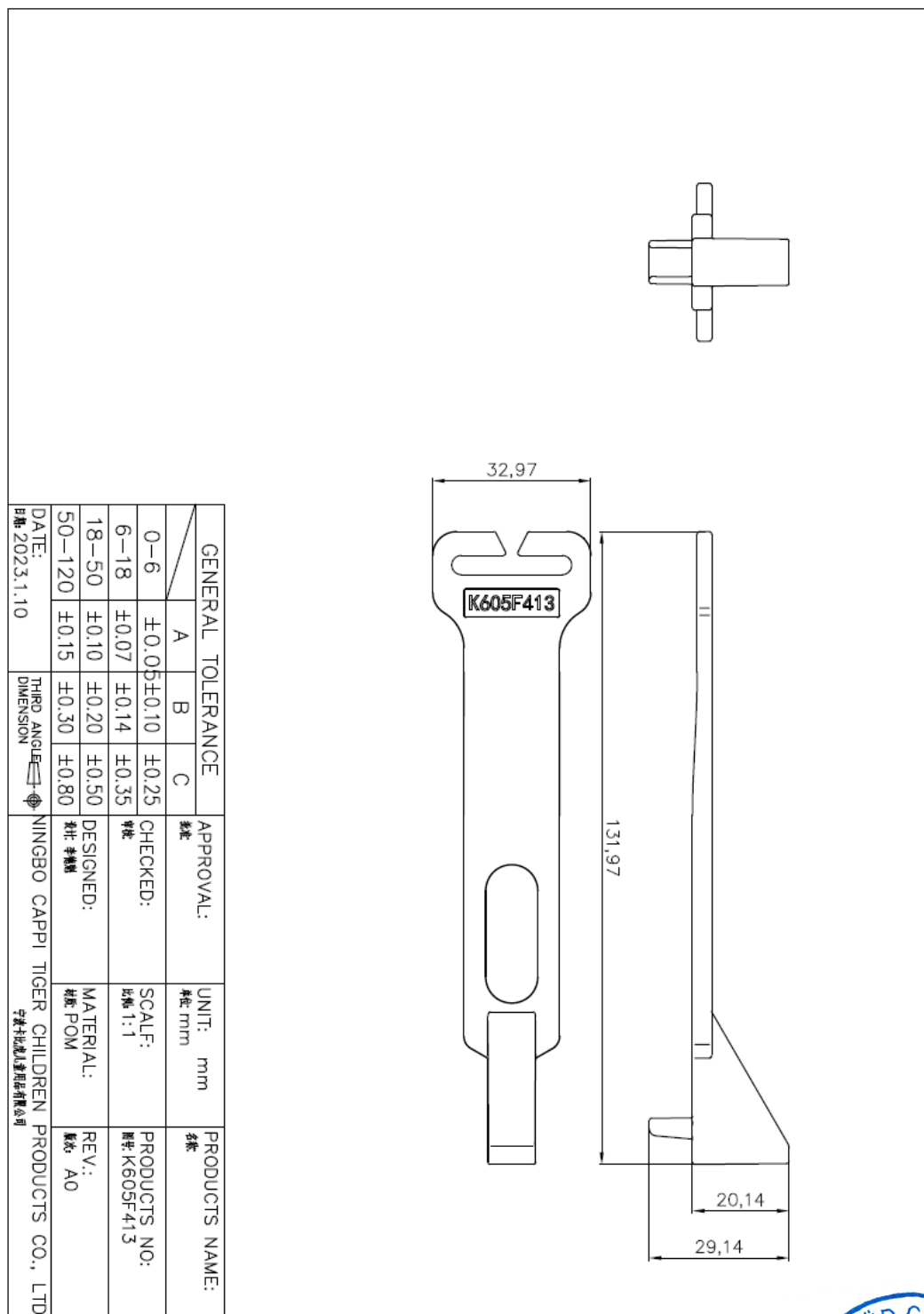
No. K605F410, Strap guide hook



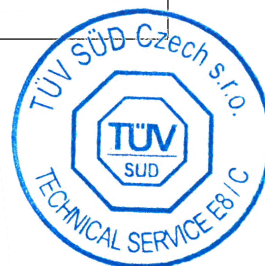
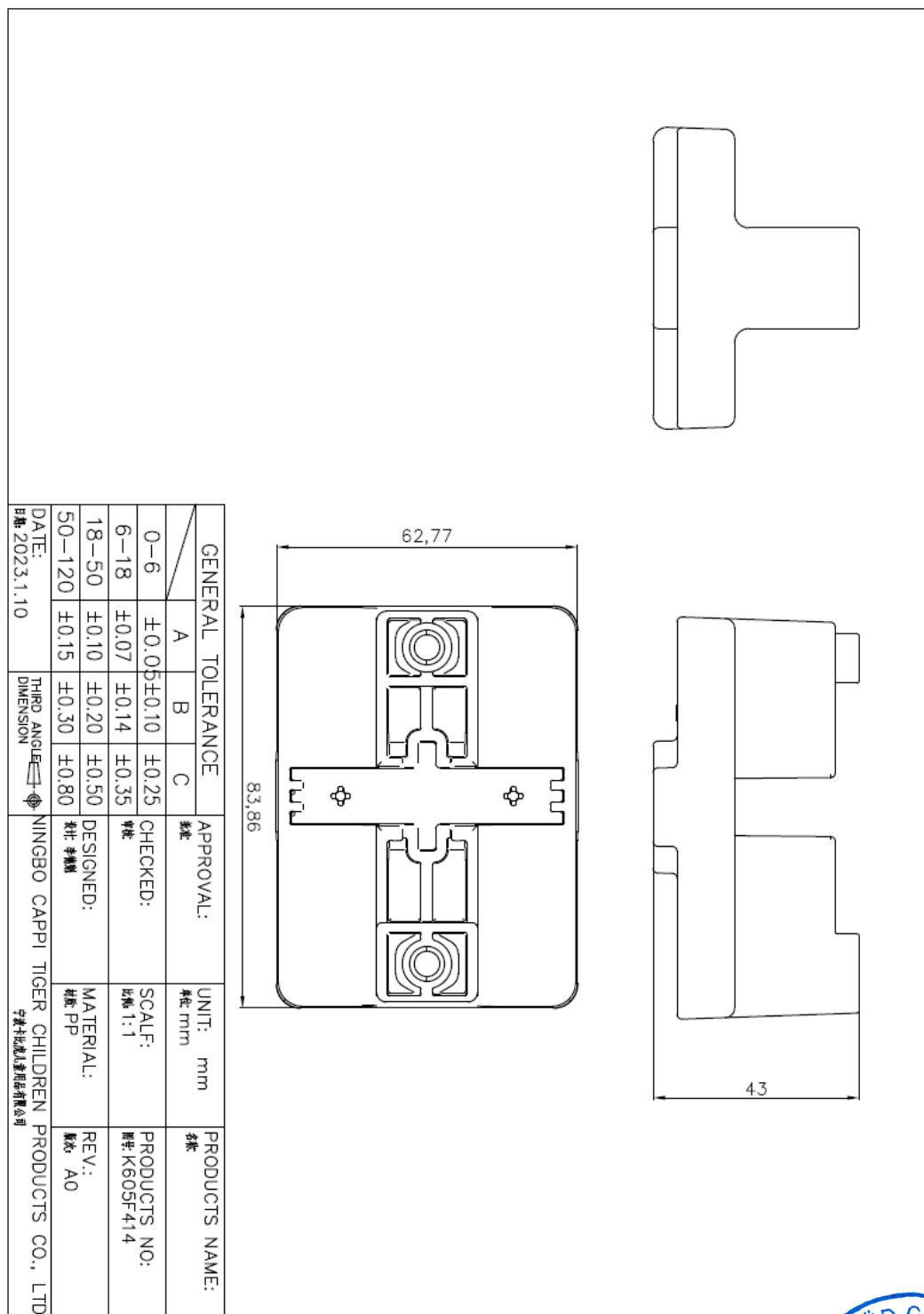
No. K605F412, Head on lock pin



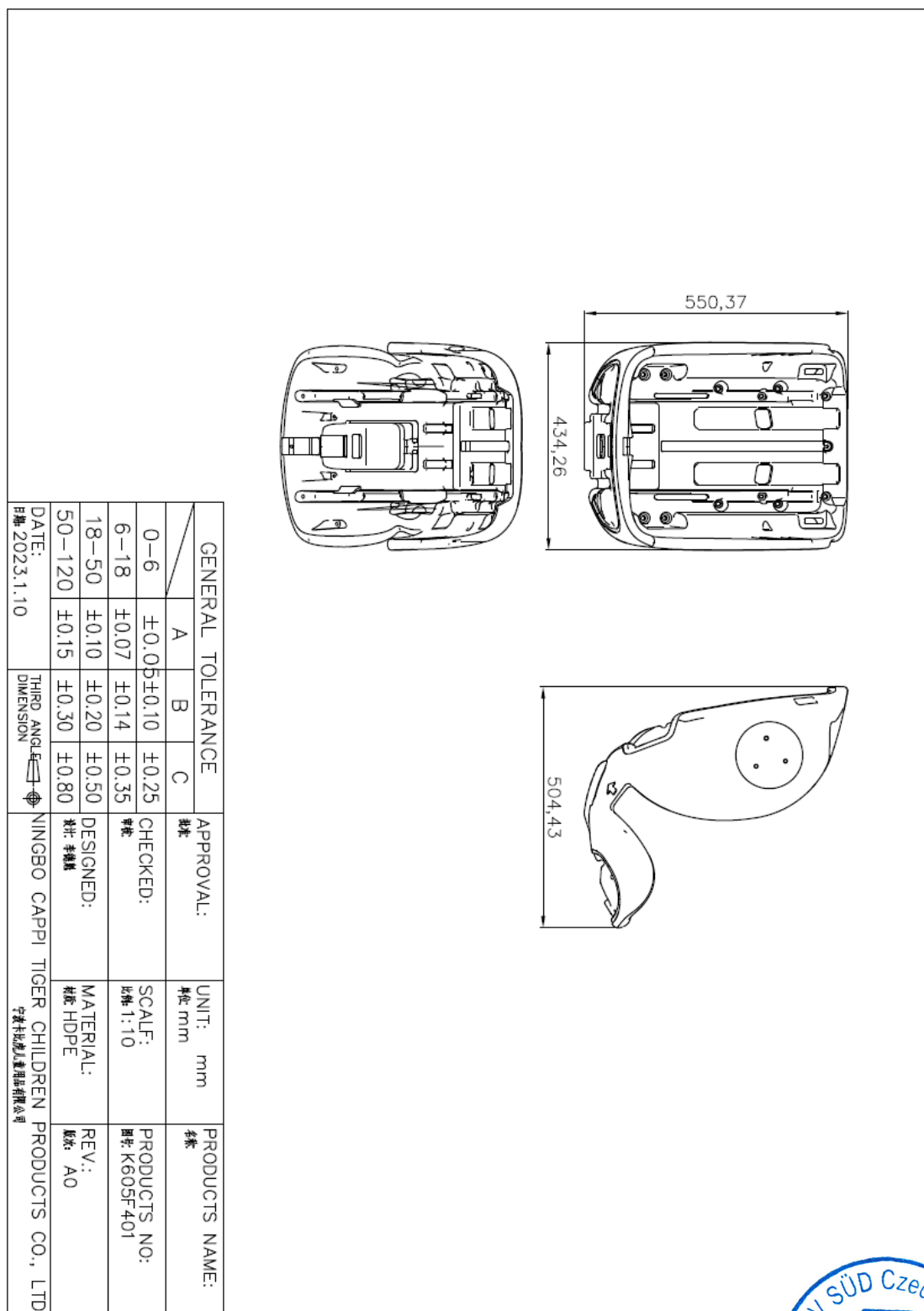
No. K605F413, Tie rod



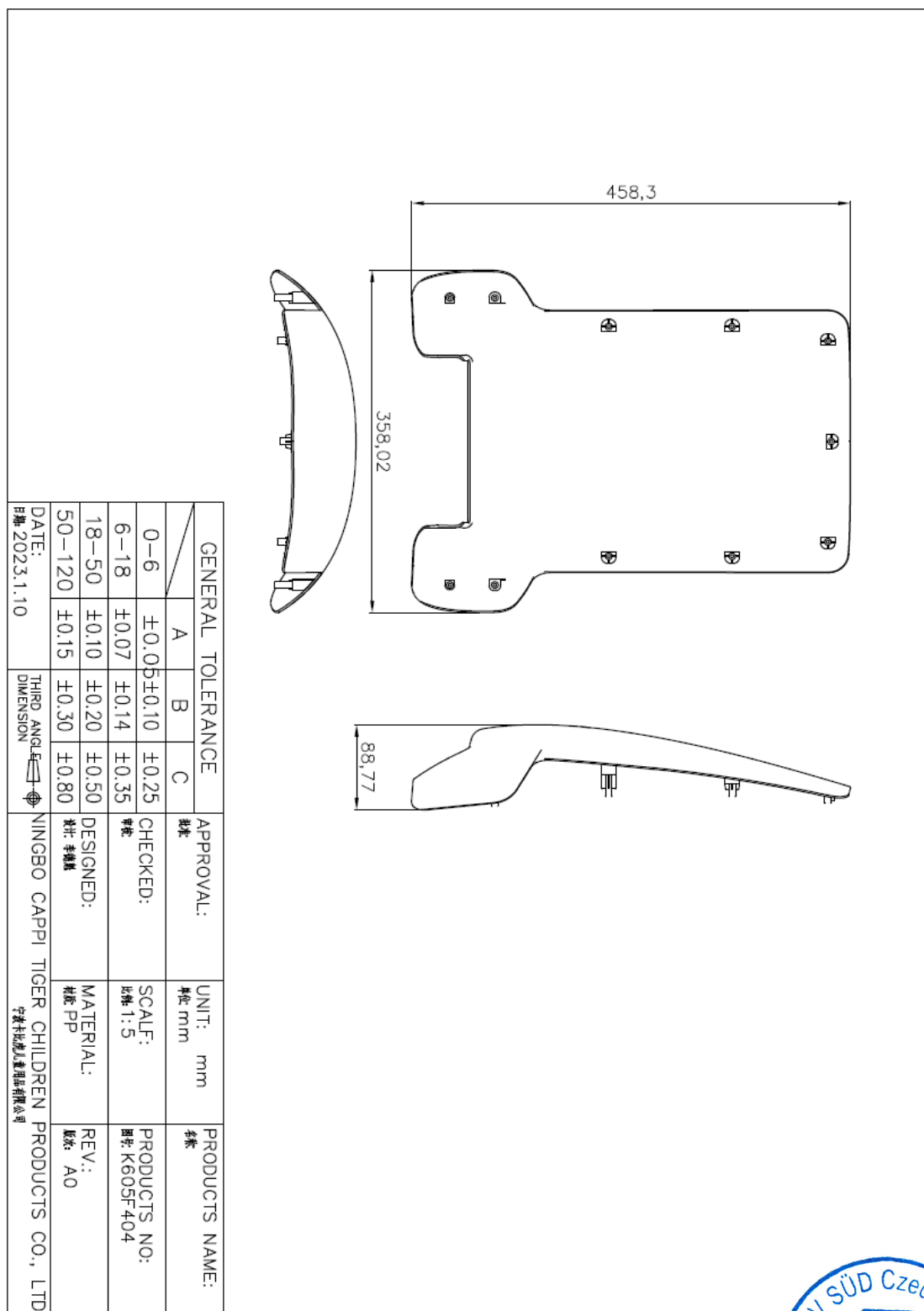
No. K605F414, Fixed block



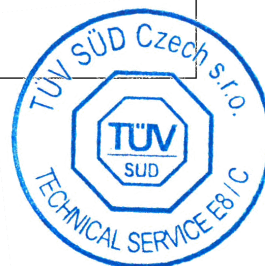
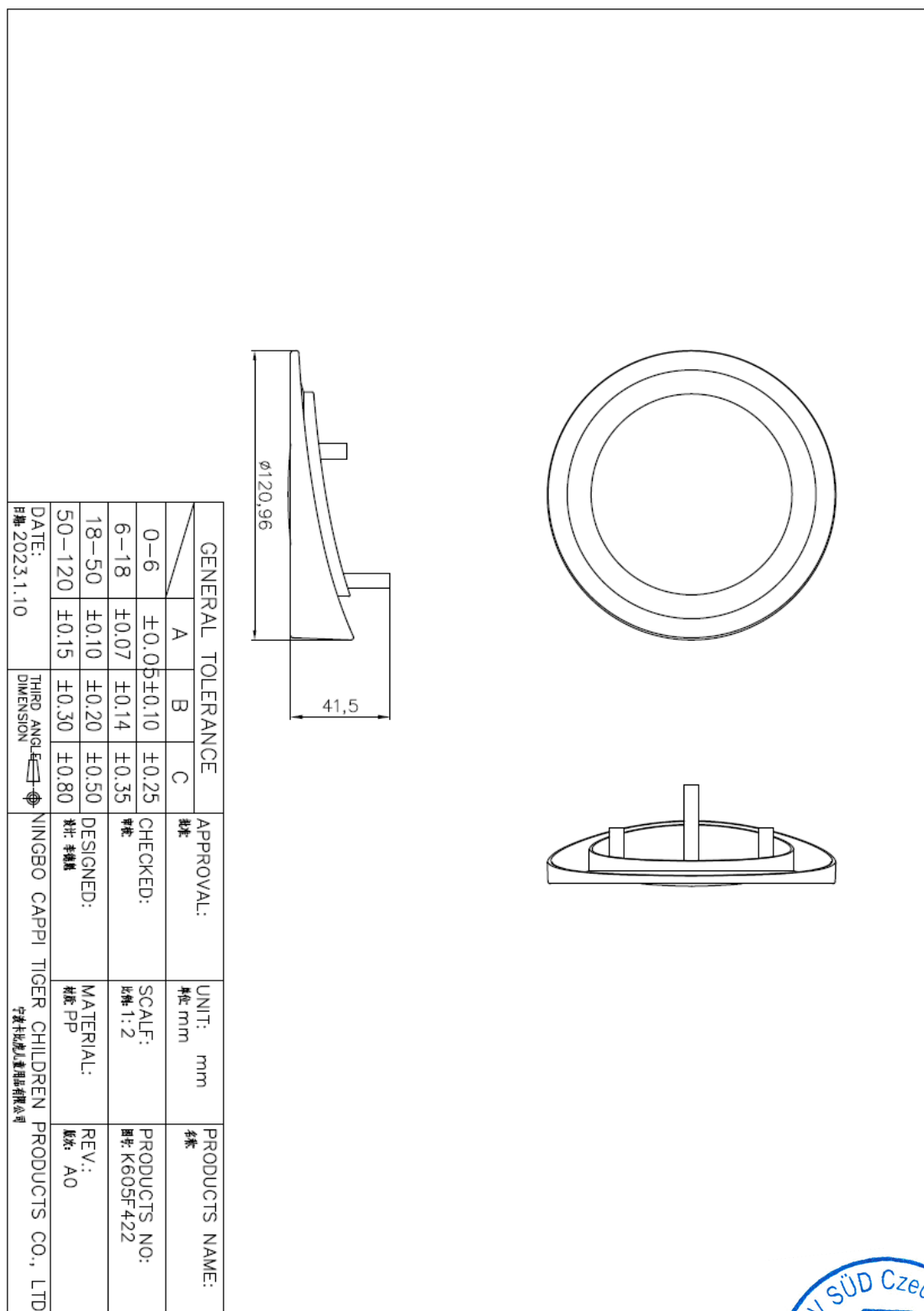
No. K605F401, Chair body



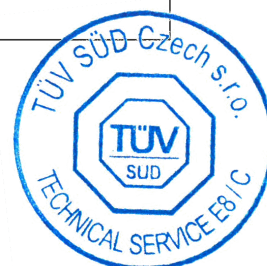
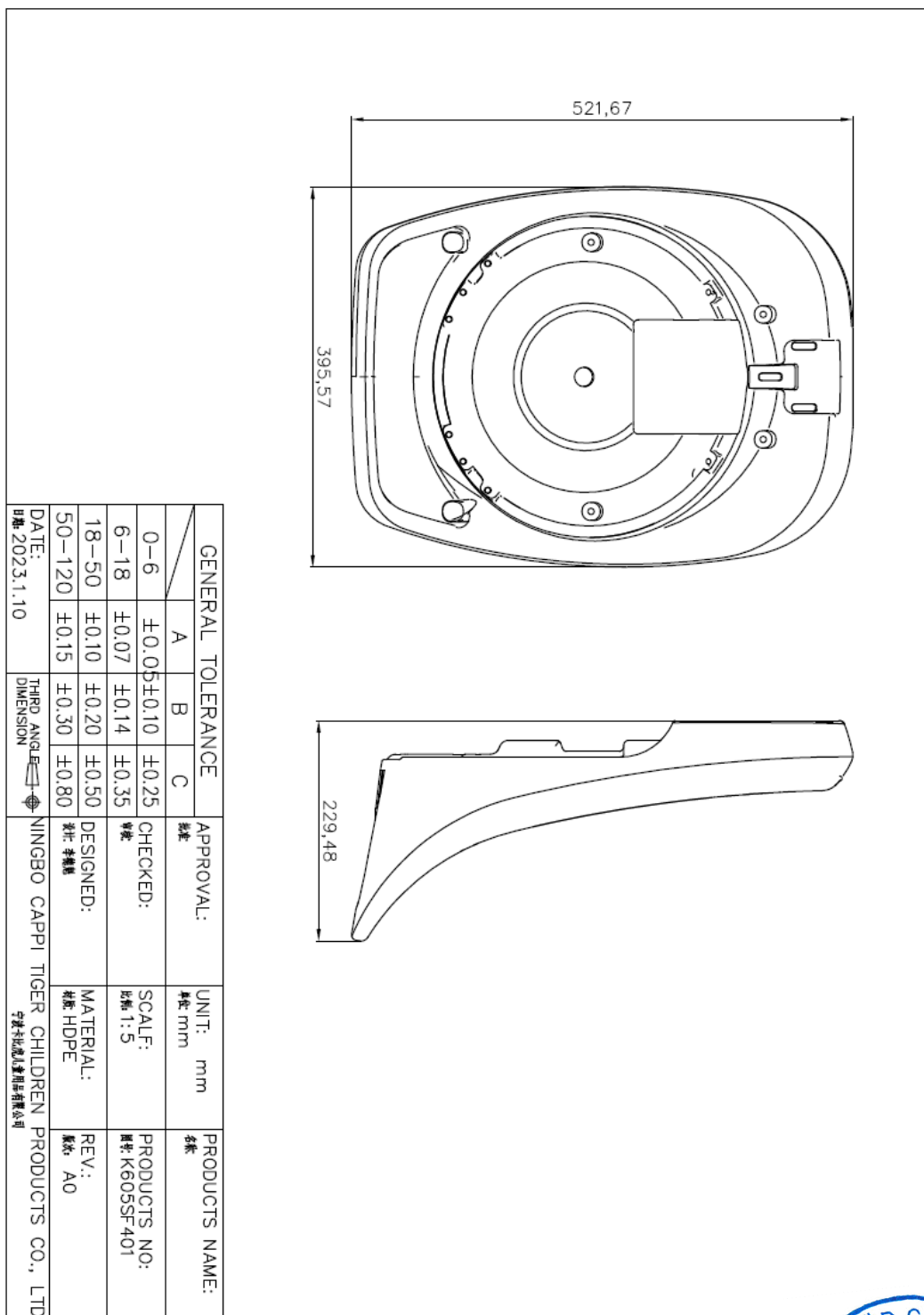
No. K605F404, Rear cover



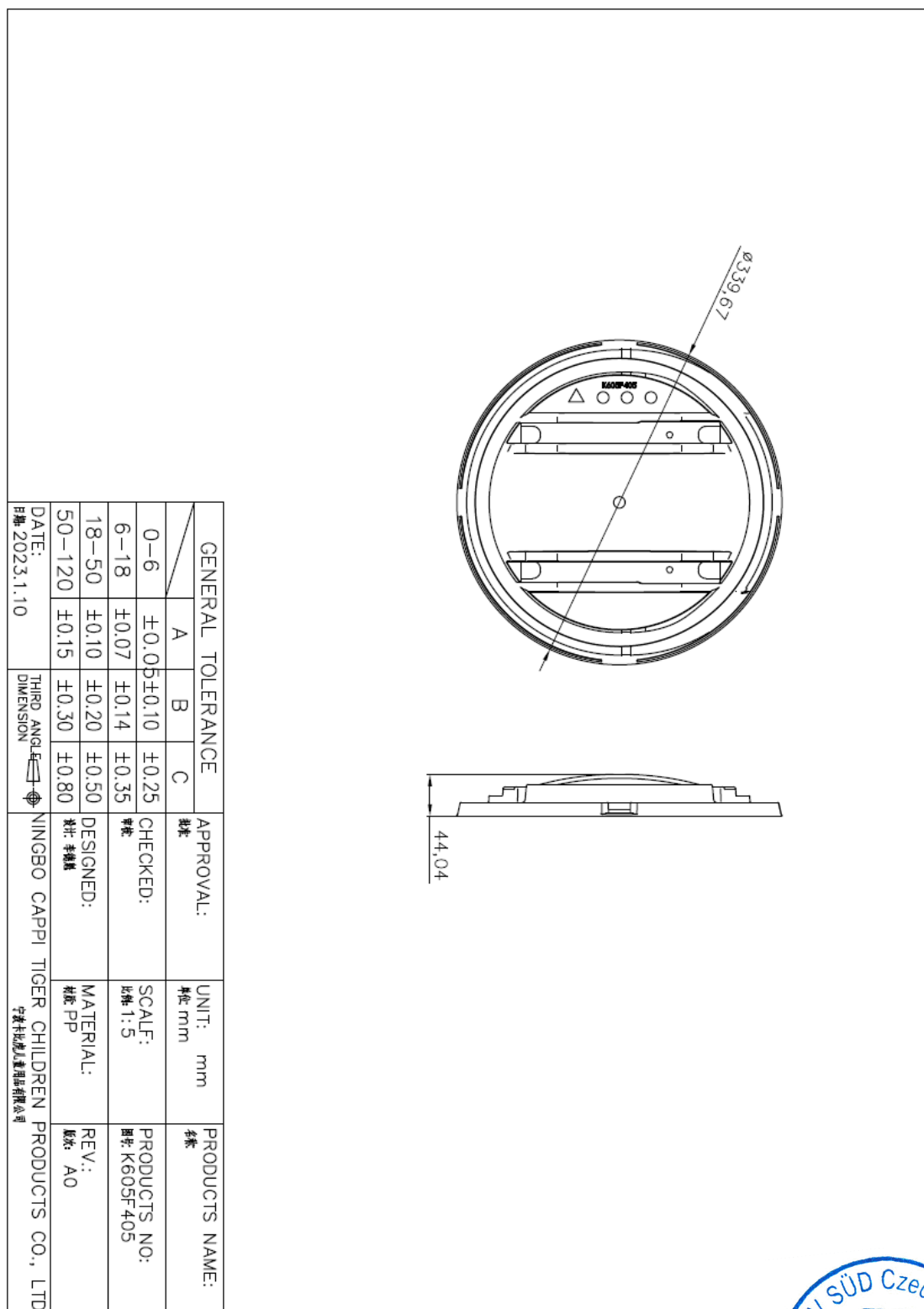
No. K605F422, Side protection



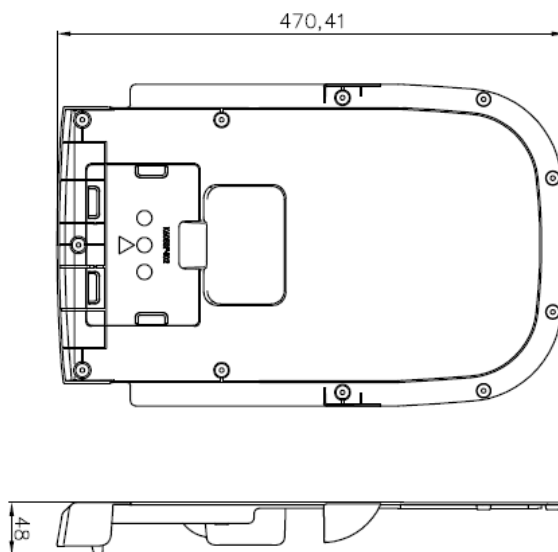
No. K605SF401, base



No. K605F405, Rotating disk



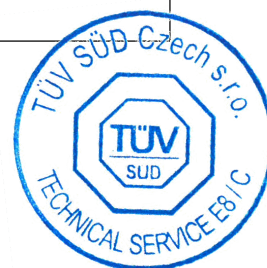
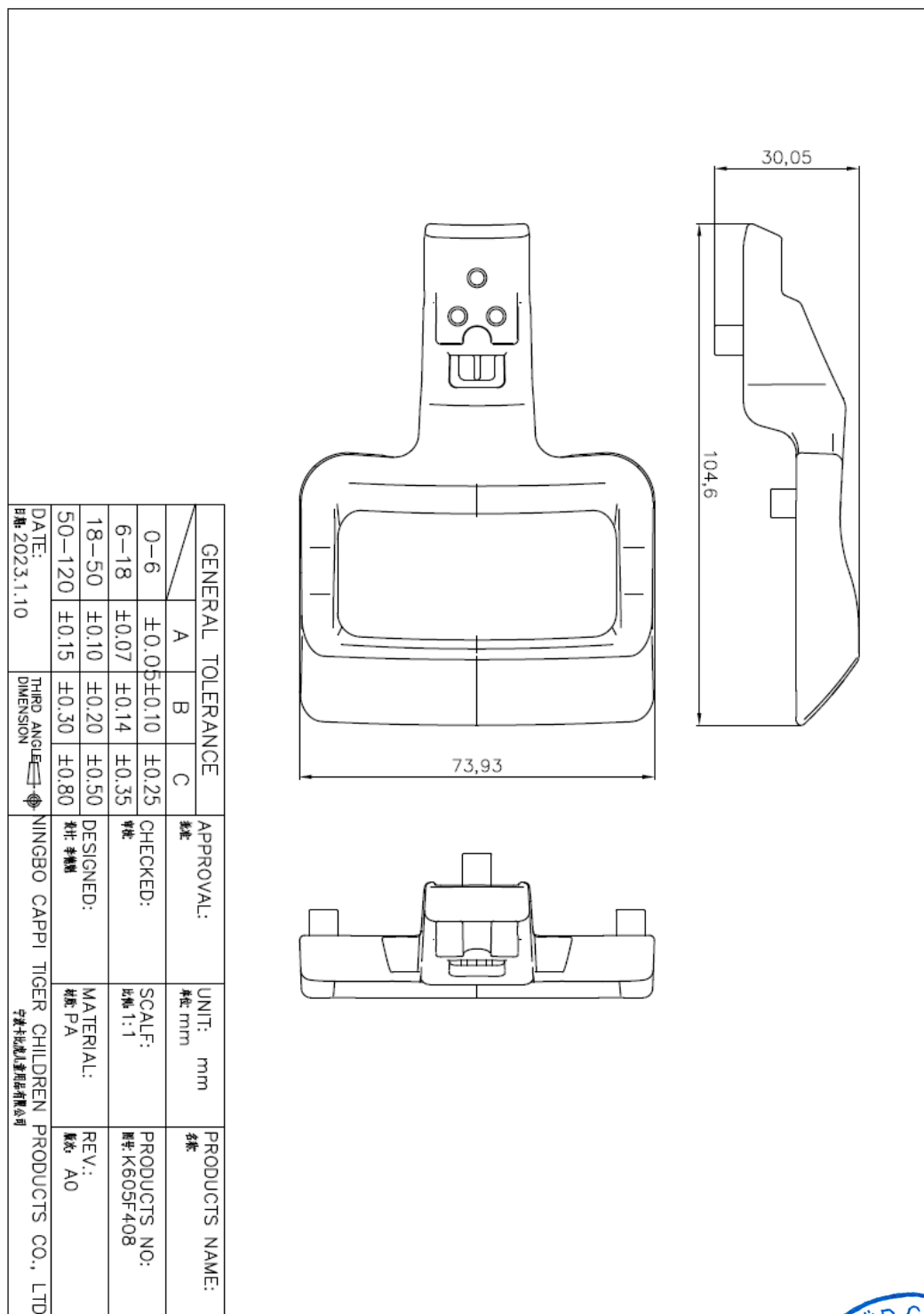
No. K605SF402, Base cover



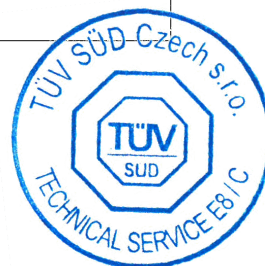
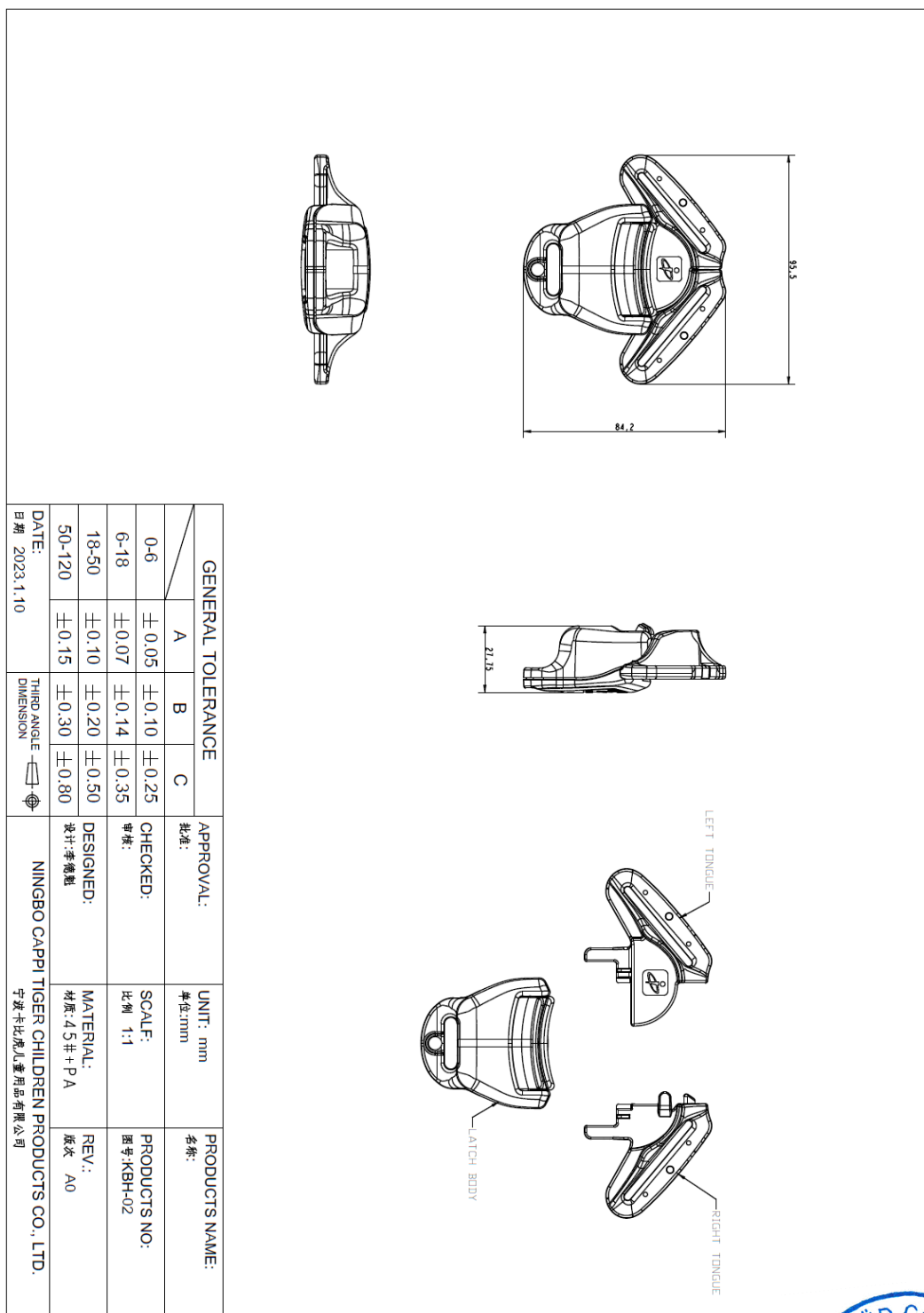
GENERAL TOLERANCE				APPROVAL:	UNIT:	PRODUCTS NAME:
	A	B	C	批准	单位 mm	名称
0-6	± 0.05	± 0.10	± 0.25	CHECKED:	SCALE:	PRODUCTS NO:
6-18	± 0.07	± 0.14	± 0.35	审核	比例 1:5	图号: K605SF402
18-50	± 0.10	± 0.20	± 0.50	DESIGNED:	MATERIAL:	REV.:
50-120	± 0.15	± 0.30	± 0.80	设计: 李耀刚	材质: PP	版次: A0
DATE:	THIRD ANGLE DIMENSION			NINGBO CAPPI TIGER CHILDREN PRODUCTS CO., LTD		
日期: 2023.1.10				宁波卡比虎儿童用品有限公司		



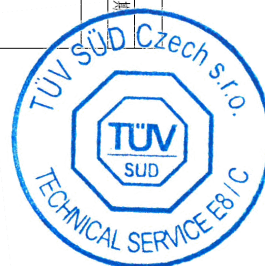
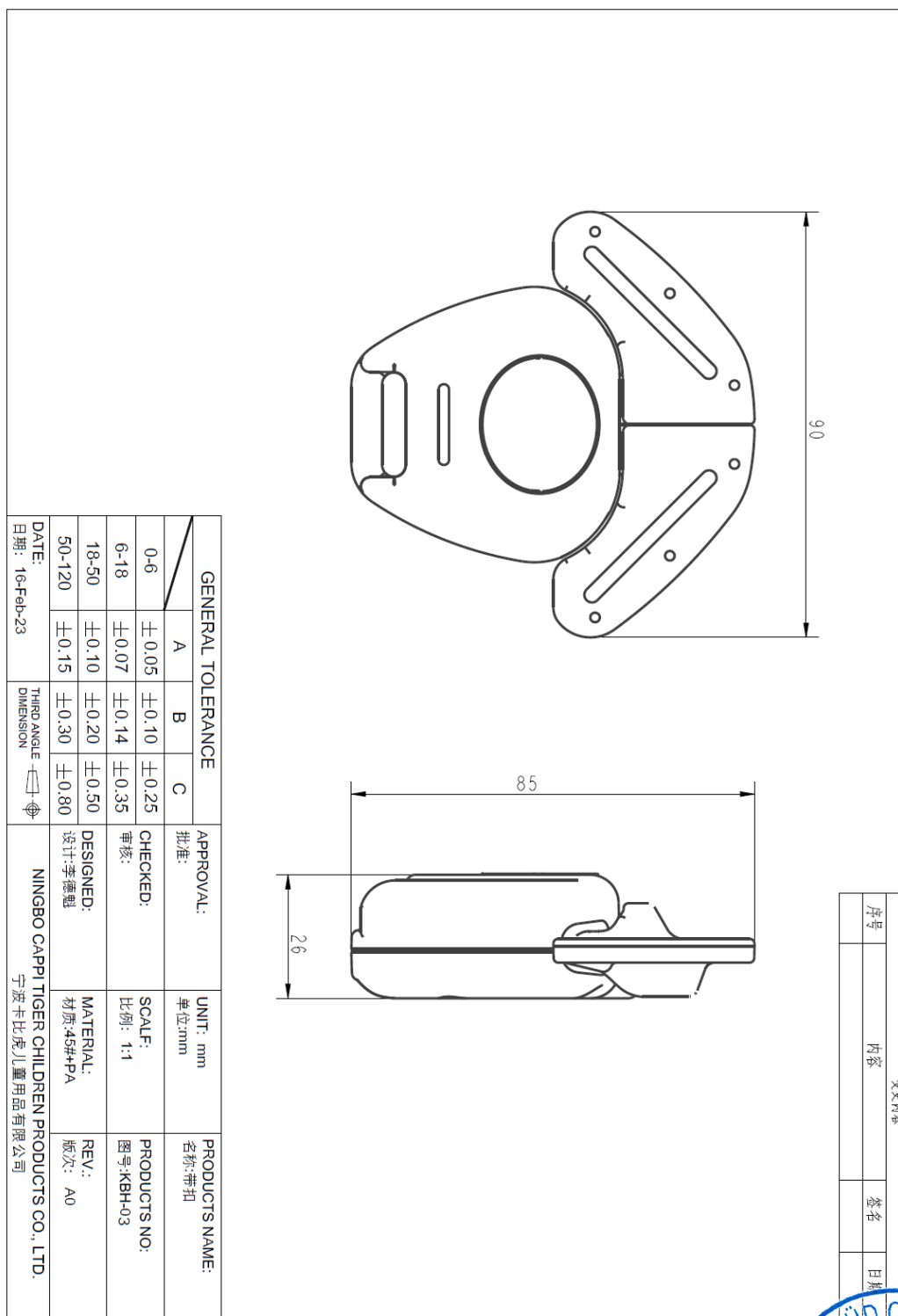
No. K605F408, Rotary lock



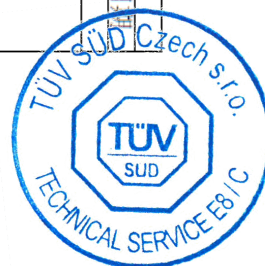
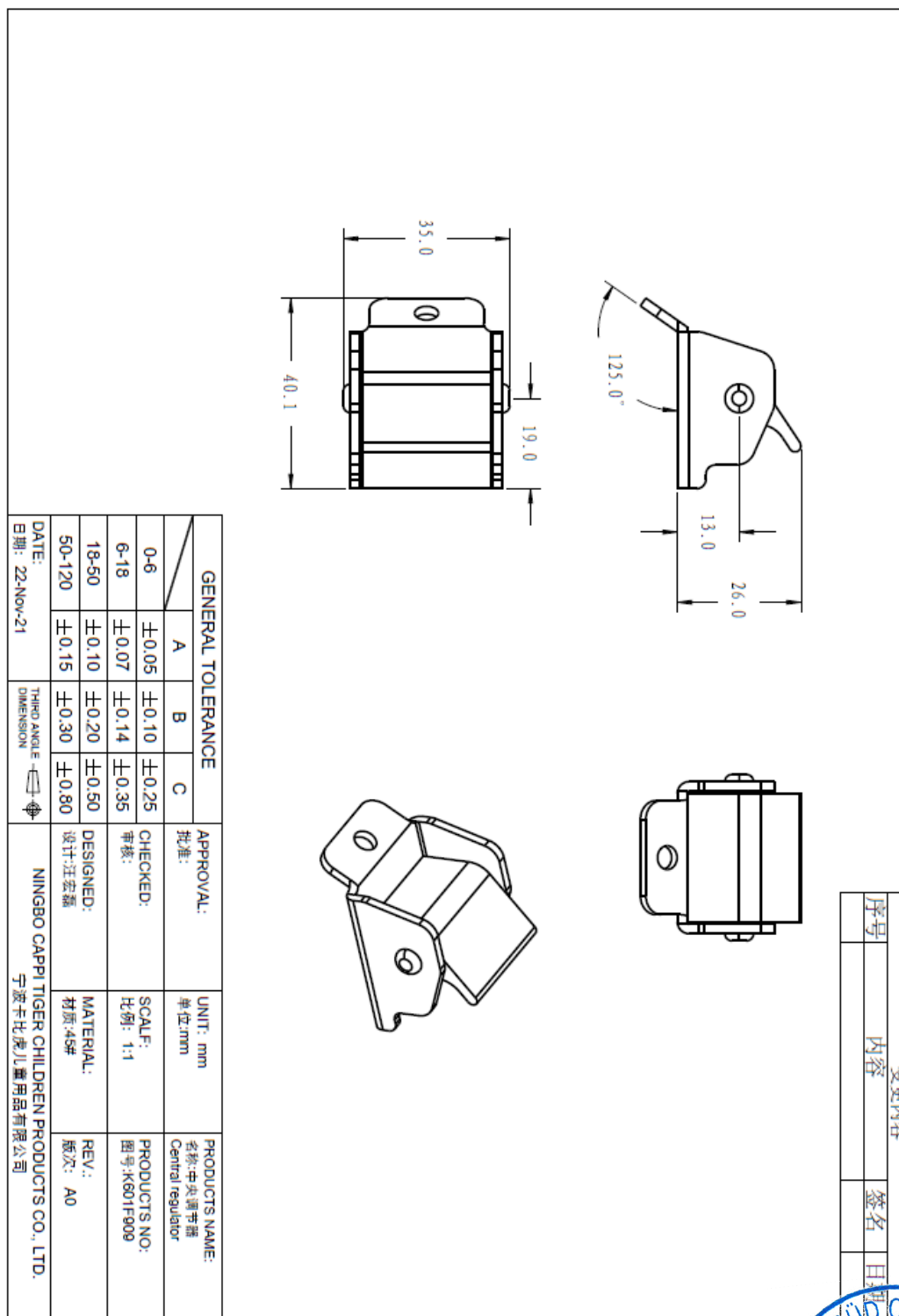
No. KBH-02, Buckle 2#



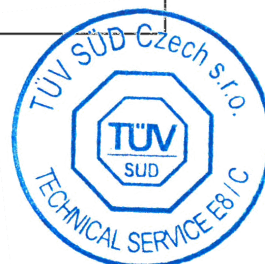
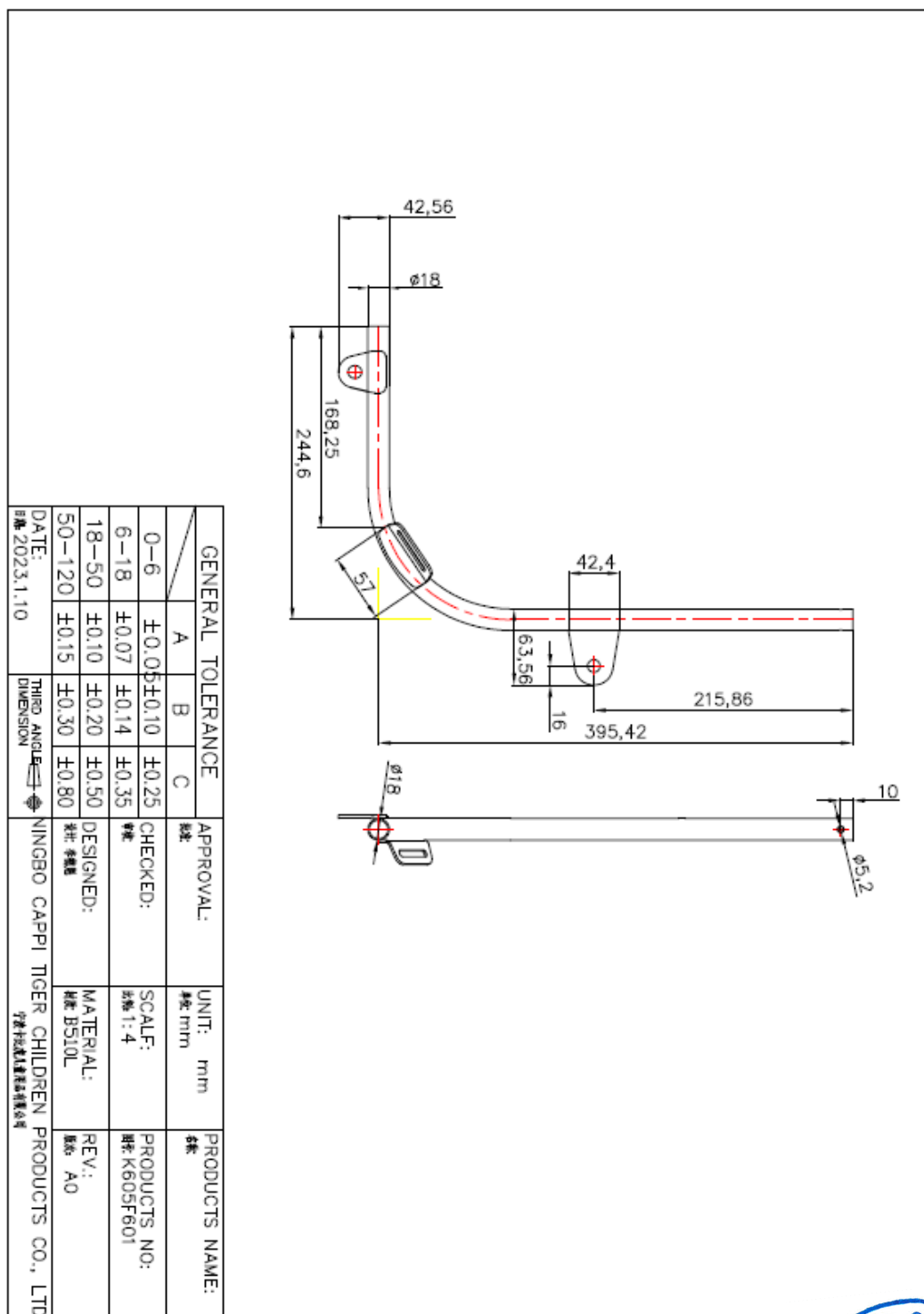
No. KBH-03, Buckle 3#

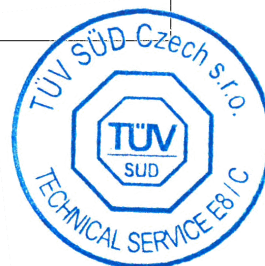


No. K001F909, Central regulator

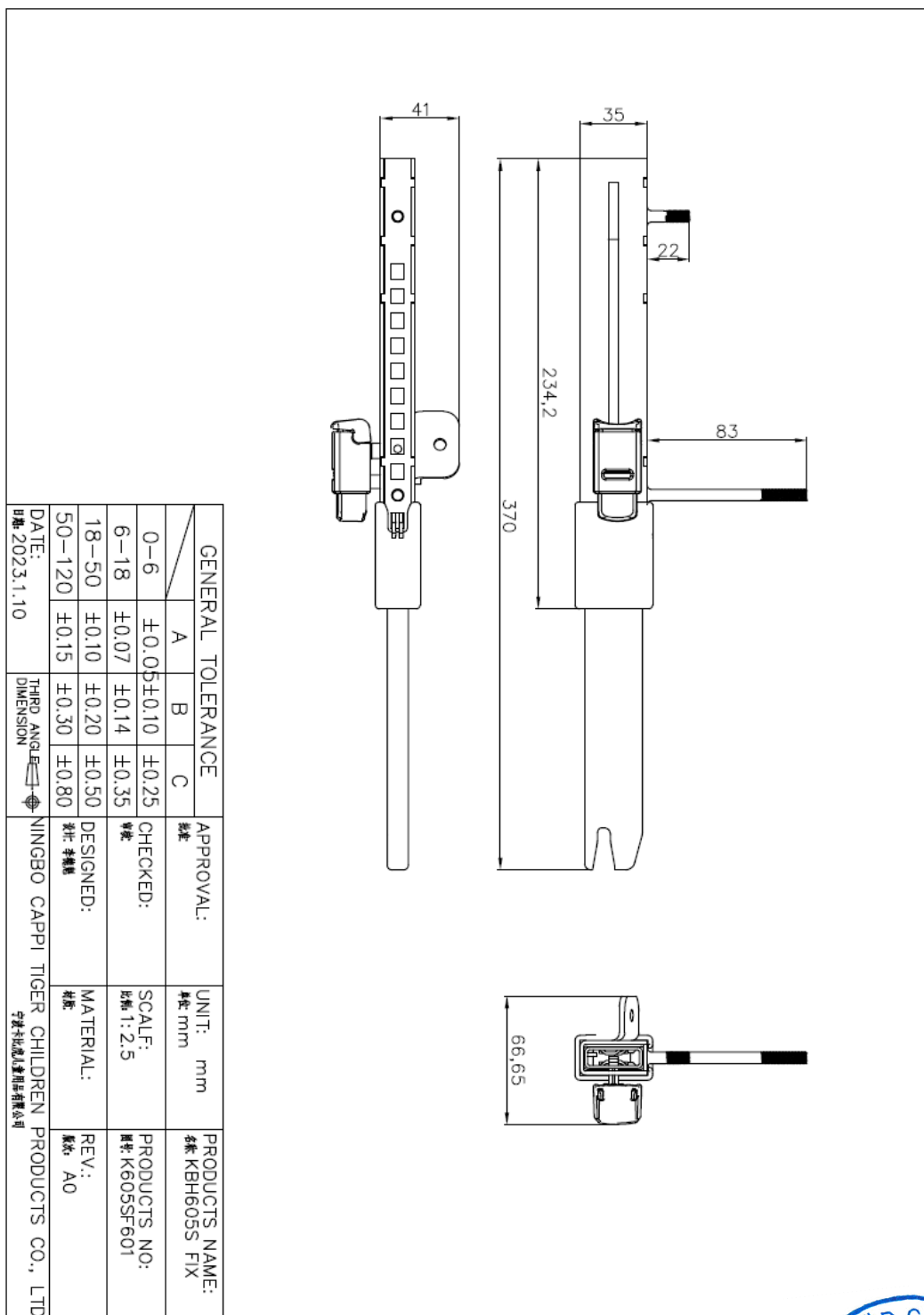


No. K605F601, tube

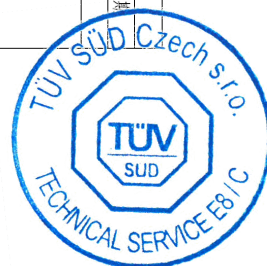
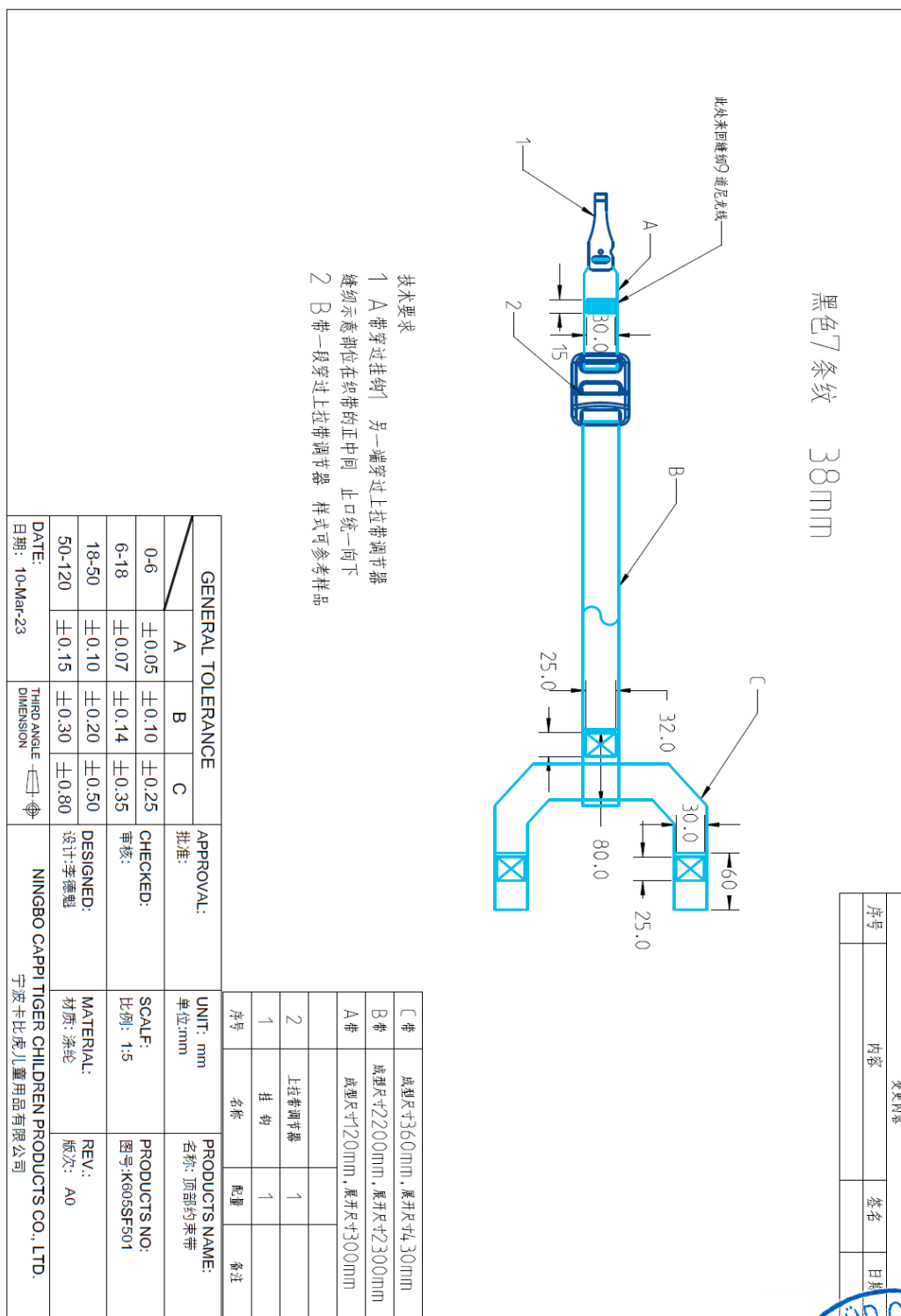


[illegible]

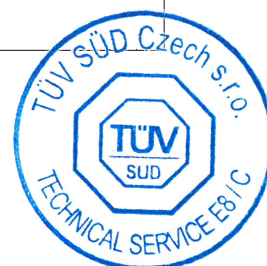
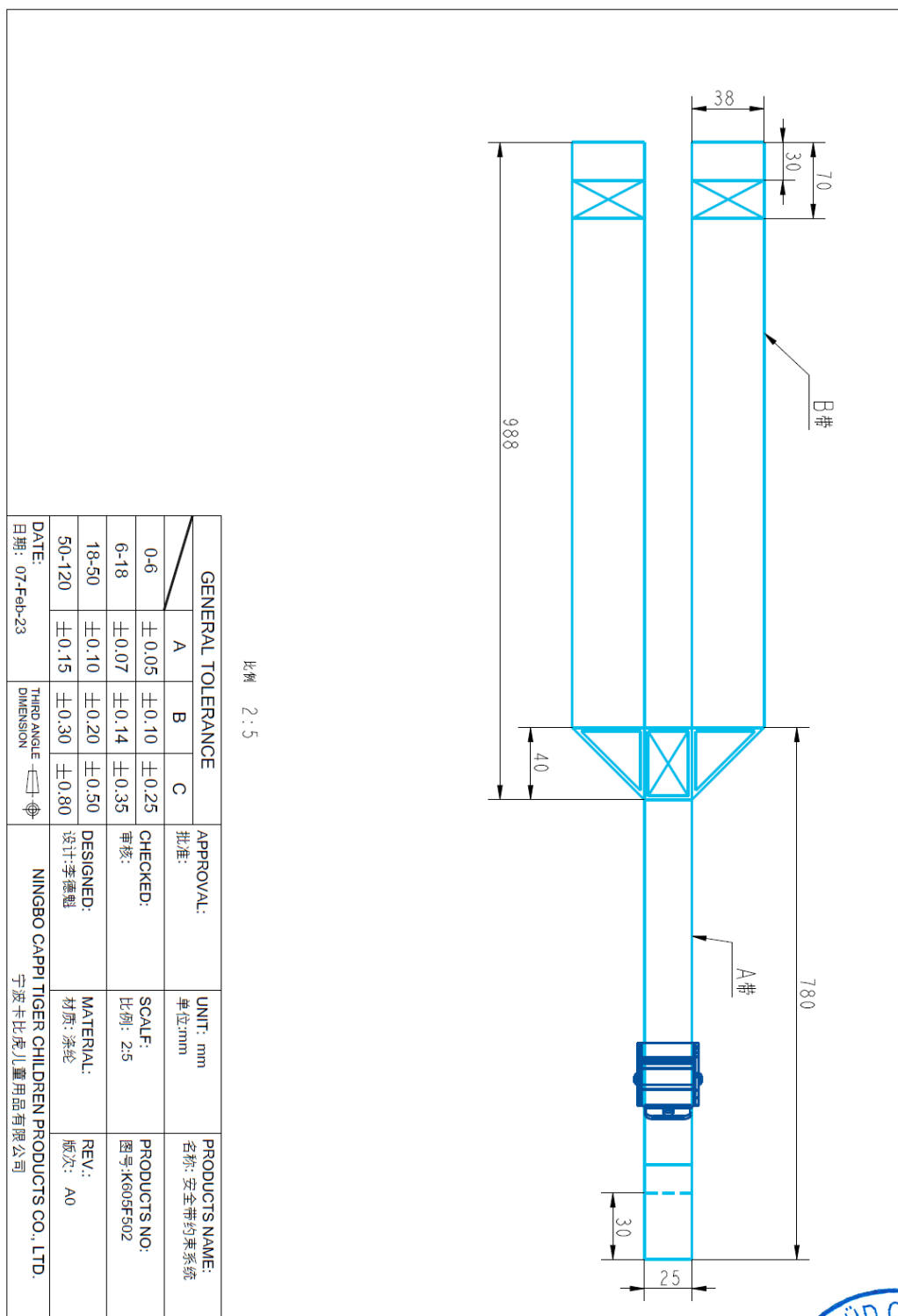
No. K605SF601, ISOFIX assembly



No. K605SF501, Top tether



No. k605F502, Harness assembly



- Position of Plastic info, Labels, Instruction and ECE approval markings

Location of plastic info. marking:

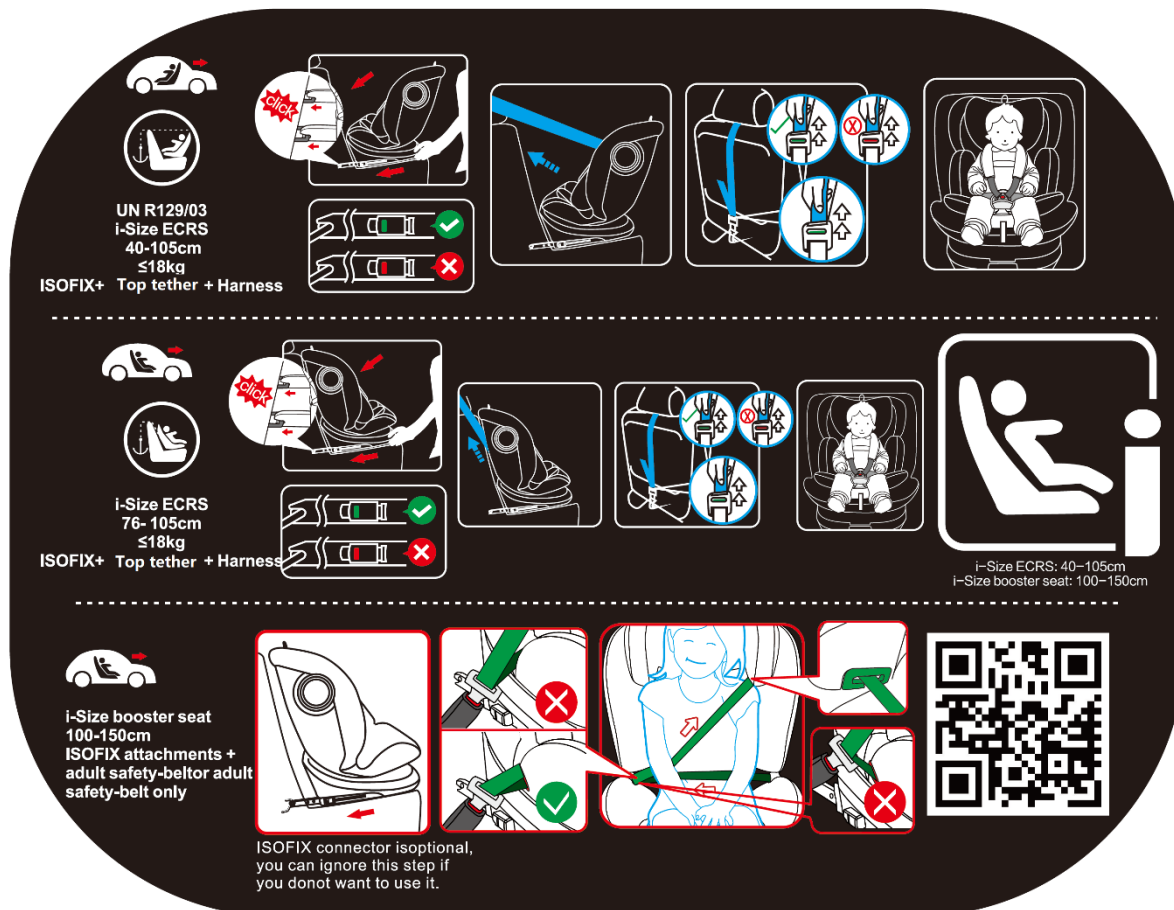


Location of the Warning Label, the Approval mark, Instruction manual and Installation label:



Appendix 2: Labels

-Installation Labels



Ningbo Cappi Tiger Children Products Co., Ltd.	Type: KBH605S
	ID No.: 129-KBH605S-00
	Date: 2022-12-20
	Page 34 of 39

Appendix 3: Declaration on the toxicity and flammability of used materials

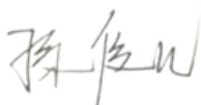
Statement Concerning the Toxicity and Flammability

We hereby declare that the materials used to manufacture the enhanced child restraint system KBH605S are in conformity with the requirements of par. 6.3.1.1 and par. 6.3.1.2 in regulation UN R129.03 regarding to the toxicity and flammability.

Faithfully yours

Responsible person: Sun Juner

Ningbo Cappi Tiger Children Products Co., Ltd.




Appendix 4: Manufacturer's instruction manual for use

Manufacturer: Ningbo Cappi Tiger Children Products Co., Ltd.
Address: No.17 Zhennan Road, Ditung Street, Yuyao City, Ningbo,
Zhejiang, China
Tel: 0574-62280888
Website: Http://www.kbbaby.com

! For future use, please keep this manual properly

Contents

Notice	01
Vital information-READ NOW	02
Seat parts introduction	06
Securing your baby	08
Rearward facing installation method for children from 40-105cm	10
Forward facing installation method for children from 76-105cm	16
Forward facing installation method for children from 100-150cm	22
Installation in the vehicle	24
Maintenance and cleaning of the product	27

Vital information-READ NOW

For your child's safety, please read these instructions carefully before use and keep them for future reference. Failure to follow the instructions contained in this manual could result in serious injury to your child.

- Do not use this child safety seat at the home. It has not been designed for home use and should only be used in your car.
- Never leave your child unattended in the child restraint system even for a short time.
- The child safety seat should be changed when it has been subject to violent stresses in an accident.
- This child restraint should be securely belted in the vehicle even when not in use. In a crash or sudden stop, an unsecured child safety seat may injure other occupants.
- Always make sure that any straps holding the seat restraint to the vehicle shall be tight, any straps restraining the child should be adjusted to the child's body, and check that the straps shall not be twisted.
- IMPORTANT! Ensuring that any lap straps is worn low down, so that the pelvis is firmly engaged.
- Do not use any load bearing contact points other than those described in the instructions and marked in the child restraint, when in doubt, please contact the child restraint manufacturer.

02

- Never use a second-hand product, as you can never be certain what was happened to it.
- Notice: Do not use in any configuration not shown in the instructions.
- Importance! Before using ISOFIX child restraint system, please read carefully the manual of automobile manufacturer about the instruction of ISOFIX fix point.
- If position of the adult safety-belt buckle relative to the main load bearing contact points on the child safety seat is unsatisfactory. Please contact the manufacturer if in doubt about this point.

Type	Stature	Facing direction	Installation	Approval type
KBH605S	40-105cm	Rearward	ISOFIX + Top tether + harness	I-SIZE
	76-105cm	Forward	ISOFIX + Top tether + harness	
	100-150cm	Forward	Vehicle 3point belt + ISOFIX attachment Vehicle 3 point belt	I-SIZE Booster Seat

04

kabihiu

INSTRUCTION
FOR USE

KBH605S

i-Size: 40-105cm

i-Size booster seat: 100-150cm

Weight: 0-36kg

Age: 0-12 Years



Notice

ATTENTION:

Notice regarding i-Size category Enhanced Child Restraint Systems(40-105cm)

This is an i-Size Enhanced Child Restraint System.

It is approved according to UN Regulation No. 129, for use in, i-Size compatible vehicle seating positions as indicated by vehicle manufacturers in the vehicle users' manual.

If in doubt, consult either the Enhanced Child Restraint System manufacturer or the retailer.

Notice regarding i-Size booster seat category Enhanced Child Restraint Systems(100-150cm)

This is a i-Size booster seat Enhanced Child Restraint System. It is approved according to UN Regulation No. 129, for use primarily in "i-Size seating positions" as indicated by vehicle manufacturers in the vehicle user's manual.

If in doubt, consult either the Enhanced Child Restraint System manufacturer or the retailer.

01

- Any luggage or other objects liable to cause injuries in the event of a collision shall be properly secured.
- The rigid items and plastic parts of a child restraint must be so located and installed that they are not liable, during everyday use of the vehicle to become trapped by a moveable seat or in a door of the vehicle.
- To prevent from the risk of fall, your child should always be fastened.
- It is dangerous to make any alteration or additions to the device without the approval of the competent authority, and a danger of not following closely the installation instructions provided by the child restraint manufacturer.
- This child safety seat is designed for children from 40-150cm.
- The child restraint must not be used without the cover.
- The seat cover should not be replaced with any other than the one recommended by the manufacturer, because the cover constitutes an integral part of the restraint performance.
- Before you adjust any movable or adjustable parts of your child safety seat, you must remove your baby from the child safety seat.
- The child safety seat should be kept away from sunlight if the seat is not provided with a textile, otherwise it may be too hot for the child's skin.

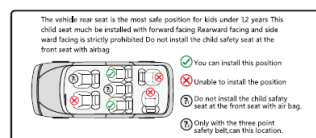
03



WARNING

Only suitable if the approved vehicles are fitted with 3 point safety belts, approved to UN/ECE Regulation No.16 or other equivalent standards.

- Car belt: Diagonal belt
- Car belt: Lap belt

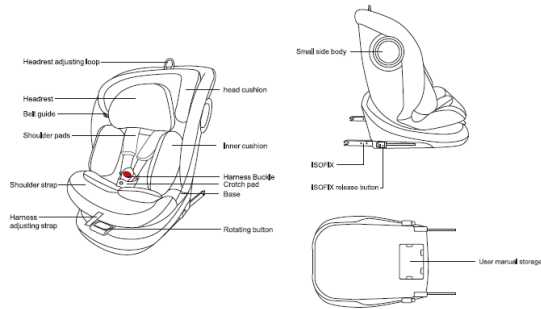


WARNING

Please read the instruction manual carefully before use. Incorrect installation could cause serious injury if in this case the manufacturer shall not be responsible for any kind of responsibility.

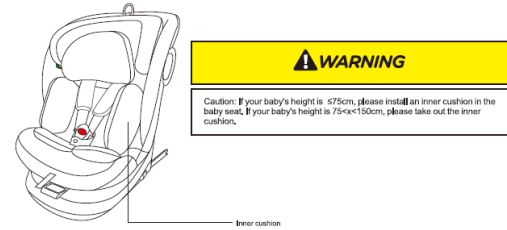


Seat parts introduction



06

Seat parts introduction



07

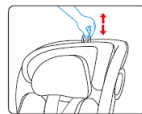
Securing your baby

Harness system & Headrest adjust

Loosen the shoulder straps by pressing the harness adjusting button and pull the shoulder straps as far forward as possible.



Pull the headrest adjusting loop to adjust the headrest upwards. Pull the headrest adjusting loop and push the headrest back to slide the headrest downwards.



Before installing the baby car seat into your vehicle, please move the headrest to the correct height for your baby/child and check that it is properly engaged by lightly sliding the headrest down.

There are 9 adjustable headrest positions. Please adjust the headrest height to close to your baby/child shoulder position. If at the middle two positions, please use the higher position.

08

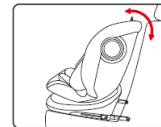
Securing your baby

To change the reclining positions

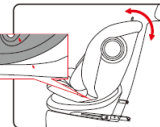
There are 5 recline positions of this product. To change the position, grasp the lever at the front of the seat, push or pull the seat into the desired position until you hear an audible sound "click".



Rearward facing adjust:
Can be used in 5 recline position for stature 40-105cm rearward facing position, there are 5 recline positions can be used in this product.



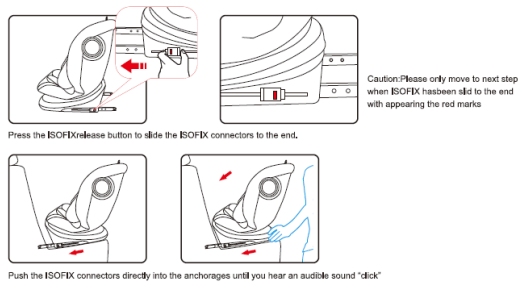
Forward facing adjust:
For stature 76-105cm, forward facing position, there are 5 recline positions can be used in this product.



Forward facing adjust:
For stature 100-150cm forward facing position, there are 5 recline positions can be used in this product.

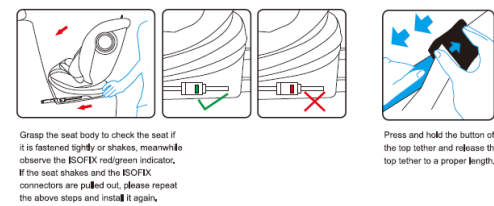
09

Installation instruction for STATURE 40-105cm Rearward facing, ISOFIX + Top tether + harness



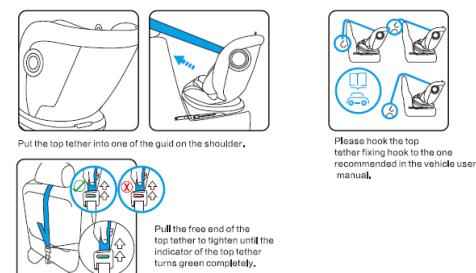
10

Installation instruction for STATURE 40-105cm Rearward facing, ISOFIX + Top tether + harness



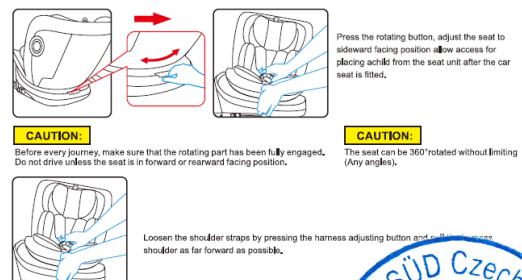
11

Installation instruction for STATURE 40-105cm Rearward facing, ISOFIX + Top tether + harness

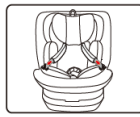
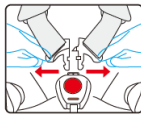


12

Installation instruction for STATURE 40-105cm Rearward facing, ISOFIX + Top tether + harness



Installation instruction for STATURE 40-105cm Rearward facing, ISOFIX + Top tether + harness



Open the buckle by pressing the red button, then fix the shoulder straps at the sides of the car seat.

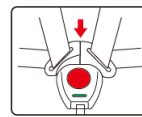


Please note a correctly adjust headrest ensures optimal protection for your child in the safety seat; the headrest must be adjusted so that the shoulder straps are at the same level as your child's shoulders or slightly above.

Place child in the car seat.

14

Installation instruction for STATURE 40-105cm Rearward facing, ISOFIX + Top tether + harness



Guide the two buckle latches together and engage them before putting them into the buckle, this should make a clicking sound.

Tighten the harness adjusting strap and make sure the harness is reasonably tight. It should restrain but not make the child uncomfortable.

Press the rotating button to adjust the seat direction. Only rearward facing position is available for child 15months.

CAUTION:

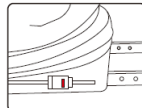
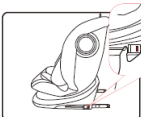
Please ensure that the lap strap is worn low down, so that the pelvis is firmly engaged. Pull on the strap until it lies flat and is close against your child's body. The straps should be correctly adjusted and ensure they are not twisted.

CAUTION:

Pull the strap end straight towards you, not upwards or downwards. Please pay attention to the strap end. Whilst travelling (especially outside the car) is should always be attached to the cover.

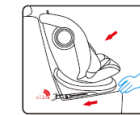
15

Installation instruction for Stature 76-105cm Forward facing, ISOFIX + Top tether + harness.



Caution: Please only move to next step when ISOFIX has been slid to the end with appearing the red marks

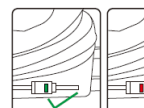
Press the ISOFIX release button to slide the ISOFIX connectors to the end.



Push the ISOFIX connectors directly into the anchorages until you hear an audible sound "click"

16

Installation instruction for Stature 76-105cm Forward facing, ISOFIX + Top tether + harness.

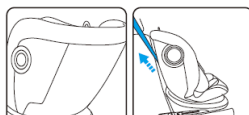


Grasp the seat body to check the seat if it is fastened lightly or shakes, meanwhile observe the ISOFIX red/green indicator. If the seat shakes and the ISOFIX connectors are pulled out, please repeat the above steps and install it again.

Press and hold the button of the top tether and release the top tether to a proper length.

17

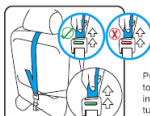
Installation instruction for Stature 76-105cm Forward facing, ISOFIX + Top tether + harness.



Put the top tether into one of the guide on the shoulder.



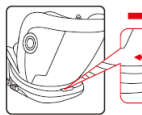
Please hook the top tether fixing hook to the one recommended in the vehicle user manual.



Pull the free end of the top tether to tighten until the indicator of the top tether turns green completely.

18

Installation instruction for Stature 76-105cm Forward facing, ISOFIX + Top tether + harness.



Press the rotating button, adjust the seat to side-facing position. Allow access for placing child from the seat until after the car seat is fitted.

CAUTION:

Before every journey, make sure that the rotating part has been fully engaged. Do not drive unless the seat is in forward or rearward facing position.

CAUTION:

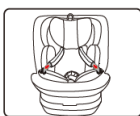
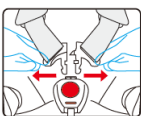
The seat can be 360° rotated without limiting (Any angles).



Loosen the shoulder straps by pressing the harness adjusting button and pull the harness shoulder as far forward as possible.

19

Installation instruction for Stature 76-105cm Forward facing, ISOFIX + Top tether + harness.



Open the buckle by pressing the red button, then fix the shoulder straps at the sides of the car seat.

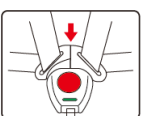


Please note a correctly adjust headrest ensures optimal protection for your child in the safety seat; the headrest must be adjusted so that the shoulder straps are at the same level as your child's shoulders or slightly above.

Place child in the car seat.

20

Installation instruction for Stature 76-105cm Forward facing, ISOFIX + Top tether + harness.



Guide the two buckle latches together and engage them before putting them into the buckle, this should make a clicking sound.

Tighten the harness adjusting strap and make sure the harness is reasonably tight. It should restrain but not make the child uncomfortable.

Press the rotating button to adjust the seat direction. Only rearward facing position is available for child 15months.

CAUTION:

Please ensure that the lap strap is worn low down, so that the pelvis is firmly engaged. Pull on the strap until it lies flat and is close against your child's body. The straps should be correctly adjusted and ensure they are not twisted.

CAUTION:

Pull the strap end straight towards you, not upwards or downwards. Please pay attention to the strap end. Whilst travelling (especially outside the car) is should always be attached to the cover.



Installation instruction for Stature 100-150cm, Forward facing, ISOFIX attachment+Vehicle 3 point belt.



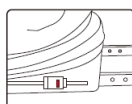
Remove the baby insert, loosen the shoulder straps by pressing the harness adjusting button and pull the harness shoulder as far forward as possible.



Place the shoulder strap behind the headrest cover, open the cover of buckle storage, assemble the buckle properly, then put it in the storage and close finally.



Unfold support leg until locks in place. Press the ISOFIX release button to slide the ISOFIX connectors to the end, Support leg must be fully storage.



Caution: Please only move to next step when ISOFIX has been slid to the end with appearing the red marks



Remove the harness shoulder pad cover by detach the cover from belt

22

Installation in the vehicle



Adjust the height of the headrest to suit your child. Put the vehicle belt through the belt guide. Place your child into the baby car seat and let the vehicle belt pass the belt guide. Fasten the vehicle belt with an audible sound "click".

CAUTION:

Make sure lap strap lap is worn low down, so that the pelvis is firmly engaged. Pull on the strap until it lies flat and is close against your child's body. The straps should be correctly adjusted and ensure they are not twisted.



Remove the baby insert, loosen the shoulder straps by pressing the harness adjusting button and pull the harness shoulder as far forward as possible.



Open the cover of buckle storage, assemble the buckle properly, then put it in the storage and close finally.

24

Installation in the vehicle

CAUTION:

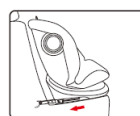
This unit should be used in a forward upright position only.

Before every journey, make sure that the rotating part has been fully engaged. Do not drive unless the seat is in forward or rearward facing position.

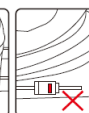
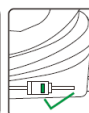
The seat can be 360° rotated without limiting (Any angles).

26

Installation instruction for Stature 100-150cm, Forward facing, ISOFIX attachment+Vehicle 3 point belt.



Push the ISOFIX connectors directly into the anchorages until you hear an audible sound "click"



Grasp the seat body to check the seatfit is fastened tightly or shakes, meanwhile observe the ISOFIX red/green indicator. If the seat shakes and the ISOFIX connectors are pulled out, please repeat the above steps and install it again.

23

Installation in the vehicle

Installation instruction for Stature 100-150cm, Forward facing, Vehicle 3 point belt.



Put the safety seat on the car.



Adjust the height of the headrest to suit your child. Put the vehicle belt through the belt guide. Place your child into the baby car seat and let the vehicle belt pass the belt guide. Fasten the vehicle belt with an audible sound "click".

25

Maintenance and cleaning of the product

Regularly check for wear or damage of parts. If the parts are found to be damaged, please do not use them.

5-point harness

The five-point harness is an important safety component. Food, beverages or other residues may accumulate in the lock, please wash with warm water. When the lock function is normal, a "click" sound can be heard. If the performance of the lock is reduced due to dirt inside, please contact the manufacturer or retailer of the child restraint system to replace it with a new buckle.

Seat belts and plastic parts

Wipe clean with warm water and neutral soap.

About cover

The child restraint system cannot be used without a cover!

The cover can be removed and washed, but we do not recommend that you remove cover frequently. Once you disassemble and wash the cover, please re-install it according to the original structure, and make sure that there is no under-installation or wrong installation of any parts.

When cleaning the cloth cover, please scrub gently with soap and warm water. Please do not use any detergent, solvent or very strong soap;

do not disassemble, move or change the cloth cover of the child car seat or any structure or component of the safety belt system;

do not add any lubricants or other chemicals to the cloth cover and seat belt system; when washing covers, shoulder covers and crotch pads, please wash them by hand when the water temperature is below 30 degrees.

27



Appendix 5: Packing info

**WARNING**

NOT TO USE REARWARD FACING ECRS IN SEATING POSITIONS WHERE THERE IS AN ACTIVE FRONTAL AIRBAG INSTALLED.

IMPORTANT - DO NOT USE FORWARD FACING BEFORE THE CHILD'S AGE EXCEEDS 15 MONTHS (Refer to instructions).

ATTENTION:

Notice regarding i-Size category Enhanced Child Restraint Systems(40-105cm)

This is an i-Size Enhanced Child Restraint System.

It is approved according to UN Regulation No. 129, for use in, i-Size compatible vehicle seating positions as indicated by vehicle manufacturers in the vehicle users' manual.

If in doubt, consult either the Enhanced Child Restraint System manufacturer or the retailer.

Notice regarding i-Size booster seat category Enhanced Child Restraint Systems(100-150cm)

This is a i-Size booster seat Enhanced Child Restraint System.

It is approved according to UN Regulation No. 129, for use primarily in " i-Size seating positions" as indicated by vehicle manufacturers in the vehicle user's manual.

If in doubt, consult either the Enhanced Child Restraint System manufacturer or the retailer.

