

**BOLLMER**

## Collection

Italian Quiet Luxury House | Rome

Tailored Suits & Blazers / Polo Shirts / Crew Neck Shirts / Wool Ties / Cotton Chinos

# Quiet luxury, crafted with restraint.

BOLLMER is a Rome-based luxury menswear brand created around the principles of quiet luxury, timeless Italian elegance and refined craftsmanship. The collection is presented as a showroom-style lookbook: no prices, no shopping cart, no commercial pressure - only fabric, form and atmosphere.

The brand language is calm, masculine and architectural. It focuses on long-lasting wardrobe essentials, premium materials and pieces designed to remain relevant beyond seasons.

## Core values

Understated elegance / Italian craftsmanship / Sustainability through longevity / Premium natural materials

# The Collection

01 Tailored Suits & Blazers

02 Polo Shirts

03 Crew Neck Shirts

04 Wool Ties

05 Cotton Chinos



A curated menswear wardrobe presented as a luxury lookbook and private showroom catalogue.

01

# Tailored Suits & Blazers

A modern expression of Italian tailoring - balanced proportions, clean lines and refined construction. This section includes both complete suits and separate blazers currently available in the collection.



# Modern Sartorial Structure

The tailoring section should feel formal but not rigid. This revised page opens with a stronger, more expressive blazer image, followed by details of lapels, shoulders, buttons and fabric texture to create a premium showroom atmosphere.



# Tailored Suit & Blazer Selection

The selection is now organized by garment type, color and use: complete suits are grouped first, followed by separate blazers. No pricing and no e-commerce layout.



**Navy Suit - Full Look**

Showroom lookbook asset



**Navy Suit -**

Showroom lookbook asset



**Navy Suit - Detail**

Showroom lookbook asset



**Smoke Blue Suit - Full Look**

Showroom lookbook asset



**Smoke Blue Suit - Styling Detail**

Showroom lookbook asset



**Smoke Blue Suit - Lapel Detail**

Showroom lookbook asset



**Deep Navy Blazer -**

Showroom lookbook asset



**Deep Navy Blazer - Full Styling**

Showroom lookbook asset



**Deep Navy Blazer - Detail**

Showroom lookbook asset



**Grey Check Blazer -**

Showroom lookbook asset

# Blazer Color & Detail Story

Continuation of the tailored selection, focused on separate blazers, lapel details and styling variations.



**Grey Check Blazer - Full Styling**

Showroom lookbook asset



**Grey Check Blazer - Detail**

Showroom lookbook asset



**Ivory Blazer - Full Look**

Showroom lookbook asset



**Ivory Blazer - Detail**

Showroom lookbook asset



**Navy Business Blazer**

Showroom lookbook asset

textured knitted polos. Each item is described by color, texture and construction.

# Polo Shirts

One unified polo shirt section combining refined classic polos and textured knitted polos. Each item is arranged in / pairs and described by color and construction.



# Classic & Knitted Polo Shirts

This section now combines all polo shirts in one unified category. Classic polos and knitted polos are presented together as refined casual luxury essentials, organized by color and texture.



# Polo Shirt Selection

Items are arranged by color and material feel, with matching product views placed together for a clean showroom presentation.



Ivory Knitted Polo



Sage Green Knitted Polo



Navy Ribbed Polo



Terracotta Ribbed Polo



Olive Ribbed Polo



Cream Cable Knit Polo

# Polo Shirt Color & Texture Story

Continuation of the unified polo selection with knitted, ribbed and striped variations arranged by color and texture.



Aqua Cable Knit Polo



Soft Cream Knit Polo



Espresso Brown Polo



Stone Contrast Polo



Espresso Stripe Polo



Sage Stripe Polo

# Polo Shirt Additional Styles

Additional polo styles and stripe designs, still organized in pairs.



Navy Stripe Polo

03

# Crew Neck Shirts

Circular / crew neck shirts presented separately from polo shirts. The section focuses on clean necklines, soft knit surfaces, refined casual silhouettes and quiet luxury essentials.



# Circular Neck Luxury Essentials

Crew neck shirts are separated from polo shirts to keep the collection structure clear. The silhouettes are minimal, soft and versatile, designed for refined everyday dressing.



# Crew Neck Shirt Selection

Items are organized by color and neckline category for a minimal quiet-luxury presentation.



Terracotta Crew Neck

Showroom lookbook asset



Light Grey Crew Neck

Showroom lookbook asset



Ivory Crew Neck

Showroom lookbook asset



Sand Crew Neck

Showroom lookbook asset



Navy Crew Neck

Showroom lookbook asset

# Crew Neck Color & Stripe Story

Continuation of the crew neck section with striped and soft-color variations arranged by palette and texture.



Espresso Stripe Crew Neck



Sage Stripe Crew Neck



Soft Pink Crew Neck

04

# Wool Ties

Wool ties with rich texture and elegant proportions. Designed to complement tailored suits, soft jackets and refined business dressing without loud branding.



# The Sartorial Accent

The wool tie section should use macro detail, knot close-ups and deep navy or charcoal grounds. The feeling is formal, textured and classic without becoming old-fashioned.



# Wool Tie Selection

A refined accessory overview for the lookbook. Pattern, weave and texture should be emphasized instead of price or purchase actions.



Midnight Medallion Tie

Showroom lookbook asset

Aqua Micro Weave Tie

Showroom lookbook asset

Bordeaux Diamond Tie

Showroom lookbook asset

Navy & Ruby Motif Tie

Showroom lookbook asset

Charcoal Wool Tie

Showroom lookbook asset



Deep Navy Texture Tie

Showroom lookbook asset

Royal Blue Check Tie

Showroom lookbook asset

Burgundy Dot Tie

Showroom lookbook asset

Teal Geometric Tie

Showroom lookbook asset

Bordeaux Star Tie

Showroom lookbook asset

# Wool Tie Color & Pattern Story

A continuation of the wool tie archive, organized by color, pattern and sartorial mood.



Merlot Plain Weave Tie

Showroom lookbook asset



Ivory Blue Micro Tie

Showroom lookbook asset



Lavender Geometric Tie

Showroom lookbook asset



Navy Ribbed Tie

Showroom lookbook asset



Midnight Star Tie

Showroom lookbook asset



Navy Pin Dot Tie

Showroom lookbook asset



Blue Check Texture Tie

Showroom lookbook asset



Ice Blue Motif Tie

Showroom lookbook asset



Sapphire Satin Tie

Showroom lookbook asset



Espresso Plaid Tie

Showroom lookbook asset

05

# Cotton Chinos

Smart-casual cotton chinos designed as the foundation of a versatile wardrobe. Clean fit, precise details and timeless neutral colors for modern Roman sophistication.



# The Smart-Casual Foundation

Cotton chinos ground the collection in practical elegance. The section should communicate precise fit, clean waist details, neutral colors and versatility with tailoring and knitwear.



# Cotton Chino Selection

Neutral, versatile trousers for a complete quiet luxury wardrobe. Detail images can be used to show buttons, waistband, pockets and fabric structure.



Sand Chino

Showroom lookbook asset



Sand Detail

Showroom lookbook asset



Olive Chino

Showroom lookbook asset



Olive Detail

Showroom lookbook asset



Ivory Chino

Showroom lookbook asset



Light Grey Chino

Showroom lookbook asset



Light Grey Detail

Showroom lookbook asset



Navy Chino

Showroom lookbook asset



Navy Detail

Showroom lookbook asset

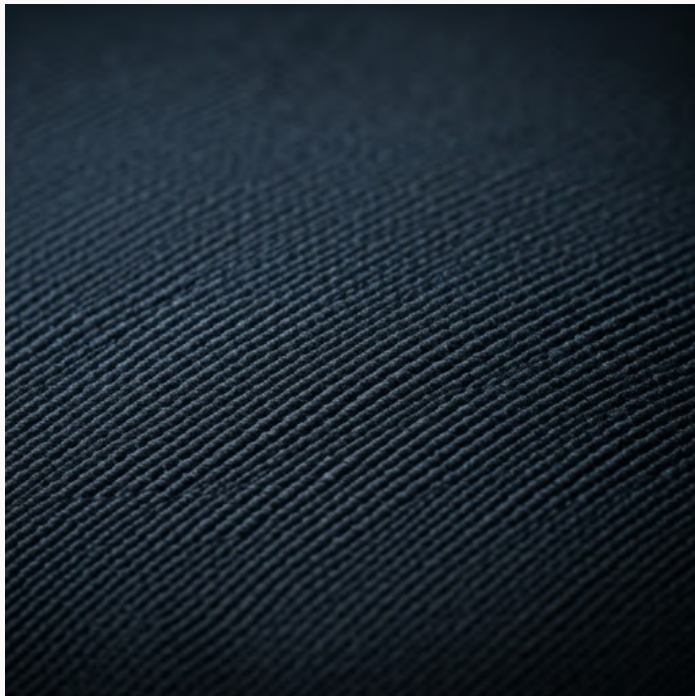


Charcoal Chino

Showroom lookbook asset

# Craftsmanship & Materials

Premium menswear begins with the hand of the fabric. BOLLMER focuses on tactile surfaces, considered construction and pieces designed to be worn for many seasons. The PDF uses close-up photography to show weave, knit structure, stitching, buttons, labels and the quiet detail that communicates luxury without loud branding.



# Sustainability through longevity

BOLLMER approaches sustainability through the idea of lasting value. Instead of fast seasonal excess, the collection is built around timeless garments, durable materials and versatile pieces that remain elegant over time.

The sustainability story is presented with calm confidence: responsible sourcing, refined production, premium natural fibers and a wardrobe designed to reduce overconsumption through quality and longevity.

01

## Longevity

Timeless silhouettes designed beyond short trends.

02

## Material integrity

Premium fabrics chosen for touch, comfort and durability.

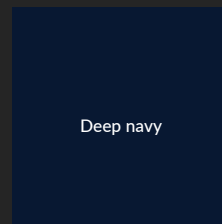
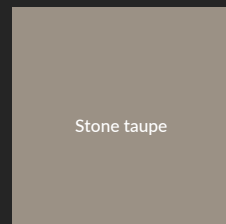
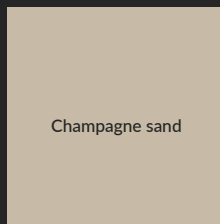
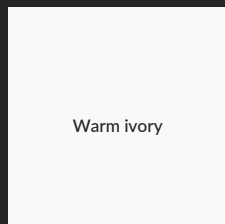
03

## Responsible luxury

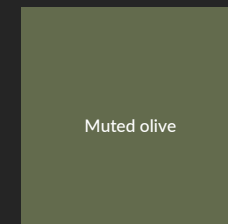
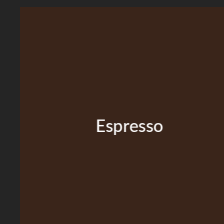
A considered wardrobe philosophy with less excess and more value.

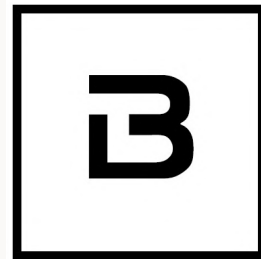
# Luxury color direction

Warm ivory, champagne sand, stone beige, deep navy, charcoal, espresso brown and muted olive. The palette should feel rich, calm and architectural - never bright or commercial.



Charcoal





**BOLLMER**

Rome, Italy

Private showroom presentation | Collection lookbook | Contact details to be added

Updated collection structure: suits and blazers, unified polos, separate crew neck shirts, wool ties and cotton chinos.